

Police Calls for Service to Dove Creek Subdivision, August 2011-January 2012

The data source is RRPD's Computer-Aided Dispatch database, which logs calls as they occur and as officers provide dispositions to dispatchers. These data have limitations in that the nature of calls may change upon an officer's arrival, and the dispositions may change upon the formal filing of a police report. As such, these results should be interpreted with caution.

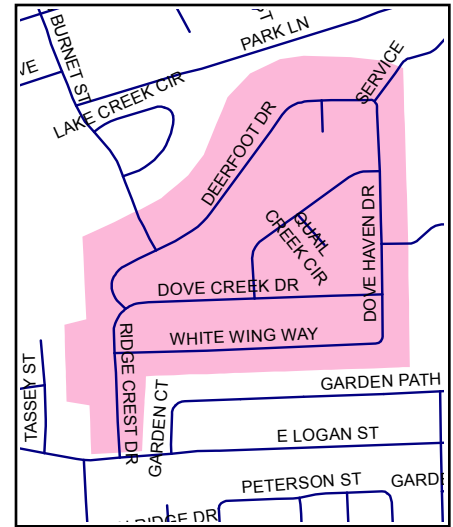
Traffic Stops and animal-related calls are excluded from this analysis.

Questions regarding the results presented here, the data source, or this report's preparation should be directed to:

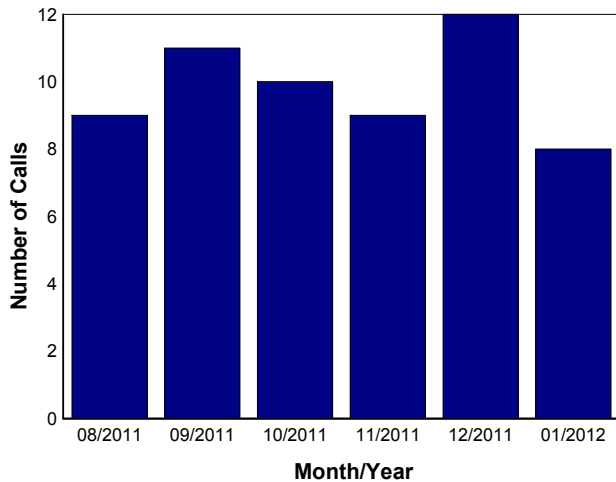
RRPD Logistics and Research Unit
2701 N. Mays
Round Rock, TX 78665

B Craytor
(512) 218-6677
bcraytor@round-rock.tx.us

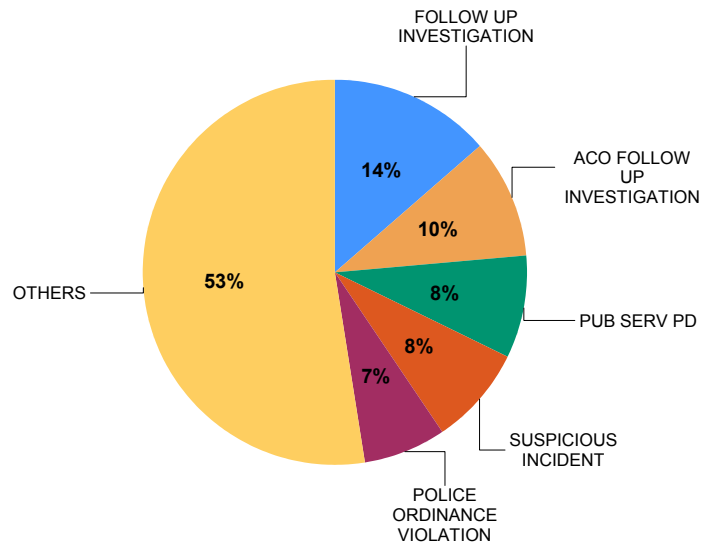
S Voll
(512) 671-2722
svoll@round-rock.tx.us



Police Calls for Service



Most Frequent Call Types



Calls by Call Type and Disposition

	Cancel- ed/False Alarm	No Report	Refer- red	Report Taken	Unable to Locate	Ticket or Warning Issued	Others	Total
911 HANGUP/ABANDONED/SILENT	0	3	0	0	0	0	0	3
ACCIDENT MAJOR	0	1	0	0	0	0	0	1
ACO FOLLOW UP INVESTIGATION	0	6	0	0	0	0	0	6
ALARM RESIDENCE	2	0	0	0	0	0	0	2
ASSIST AGENCY	0	1	0	0	0	0	1	2
BURGLARY NOT INPROGRESS	0	0	0	3	0	0	0	3

	Cancel- ed/False Alarm	No Report	Refer- red	Report Taken	Unable to Locate	Ticket or Warning Issued	Others	Total
CRIMINAL MISCHIEF NOT IN PROGS	0	0	0	3	0	0	0	3
DISTURBANCE	0	3	0	0	0	0	0	3
FOLLOW UP INVESTIGATION	1	7	0	0	0	0	0	8
FRAUD	0	1	0	0	0	0	0	1
IDENTITY THEFT	0	0	0	2	0	0	0	2
JUVENILE OFFENSE	0	1	0	0	0	0	0	1
LOOSE LIVE STOCK	0	1	0	0	0	0	0	1
MEDICAL ASSIST	0	0	3	0	0	0	0	3
POLICE ORDINANCE VIOLATION	0	1	0	0	0	3	0	4
PUB SERV PD	0	2	1	2	0	0	0	5
SEX OFFENDER COMPLIANCE	0	1	0	0	0	0	0	1
SUSPICIOUS INCIDENT	0	1	1	0	1	1	1	5
THEFT NOT IN PROGRESS	0	1	0	3	0	0	0	4
TRAFFIC HAZARD	0	1	0	0	0	0	0	1
Total	3	31	5	13	1	4	2	59

NOTES ON CALL TYPES

1. The serious crime call types -- homicide, assault, sexual assault, robbery, burglary, theft and vehicle theft -- are included in the database query. If they do not appear in the above table, it is because there are no crimes in those categories during the period in question.