

Police Activity in the Boardwalk Shopping Center, Aug 2011-Jan 2012

NOTES

This photo shows the buildings and parking lot included in the analysis. The data source for this analysis is the Police Department's Computer-Aided Dispatch (CAD) database. That means the data are drawn from the information police dispatchers enter into the computer as calls occur.

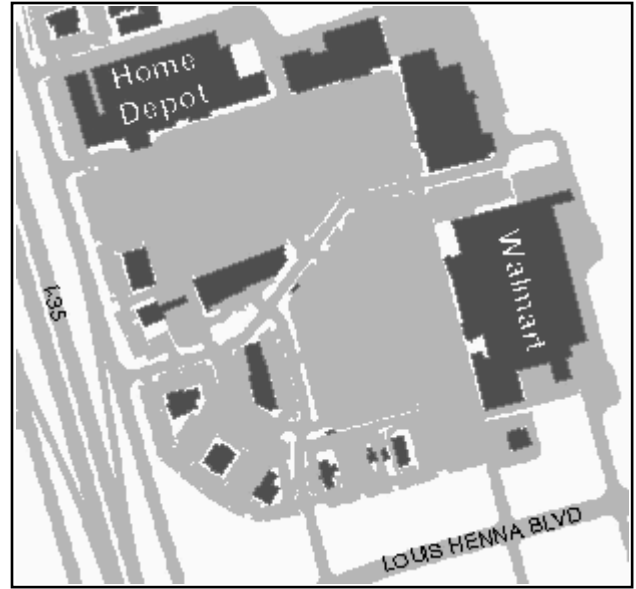
The primary limitation of these data is that they may not reflect the actual nature of a call or its true final disposition. Thus, some care should be exercised in interpreting the results presented here. Traffic Stops and animal-related calls are excluded from this analysis.

Any questions regarding the results of this analysis, the data source, or the preparation of this report should be directed to:

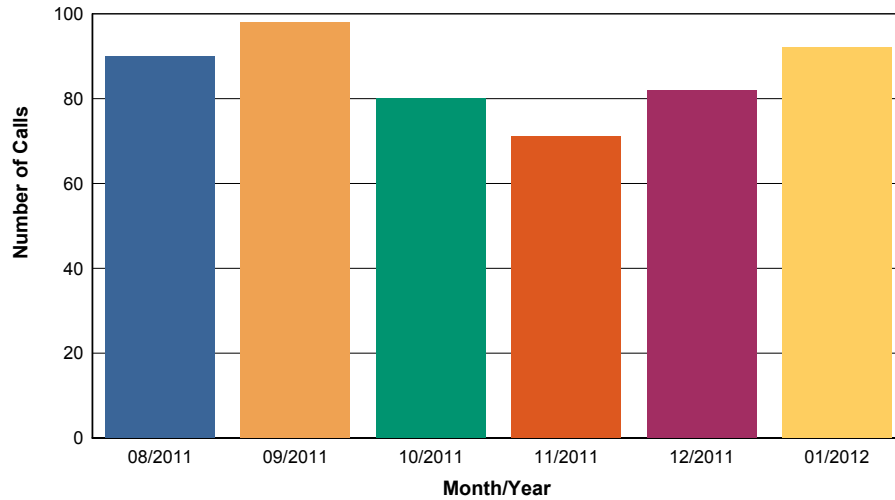
RRPD Logistics and Research Unit
2701 N. Mays
Round Rock, TX 78665

B Craytor (512) 218-6677
bcraytor@round-rock.tx.us

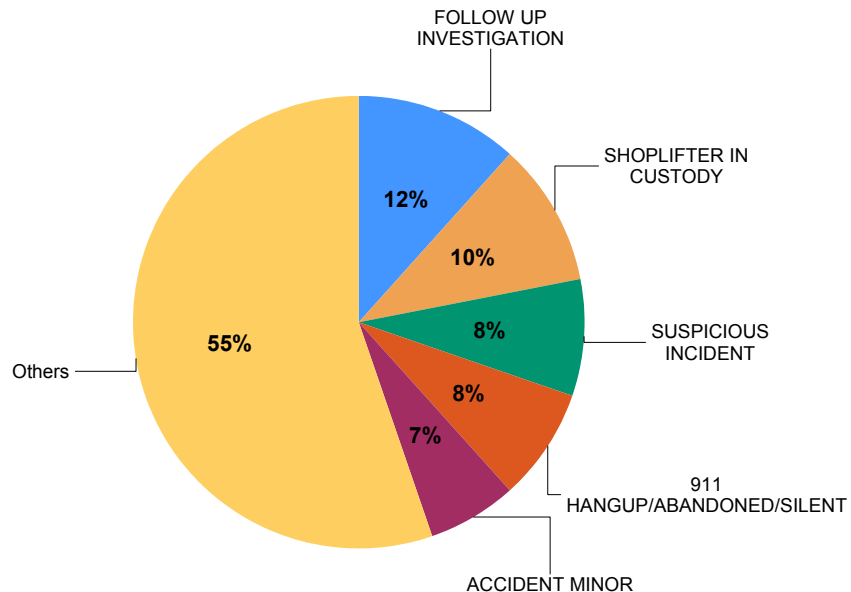
S Voll (512) 671-2722
svoll@round-rock.tx.us



Police Calls for Service



Most Frequent Call Types



Calls by Nature of Call and Disposition	Arrest Made	No Report	Refer-red	Report Taken	Ticket or Warning	Un-founded	Unable to Locate	Others	Total
911 HANGUP/ABANDONED/SILENT	0	4	0	0	0	1	1	35	41
ACCIDENT MAJOR	0	0	0	0	0	0	0	4	4
ACCIDENT MINOR	0	8	1	1	0	0	3	21	34
ACO FOLLOW UP INVESTIGATION	0	6	0	0	0	0	0	0	6
ALARM BUSINESS	0	1	1	0	0	0	0	23	25
ALARM PANIC/HOLD-UP	0	0	0	1	0	0	0	4	5
ALCOHOL VIOLATIONS	0	1	0	0	0	0	0	0	1
ASSAULT IN PROGRESS	0	1	0	0	0	0	0	0	1
ASSIST AGENCY	0	3	0	0	0	0	0	1	4
BURGLARY IN PROGRESS	1	0	0	0	0	0	0	0	1
BURGLARY NOT INPROGRESS	0	0	0	10	0	0	0	1	11
CREDIT CARD ABUSE	0	2	0	13	0	0	0	0	15
CRIMINAL MISCHIEF NOT IN PROGS	0	2	0	0	0	0	0	0	2
DISTURBANCE	0	15	0	1	0	0	1	2	19
DRIVING WHILE INTOXICATED	0	0	0	0	0	0	1	1	2
FLAG DOWN	0	9	0	0	0	0	0	0	9
FOLLOW UP INVESTIGATION	0	57	0	1	0	0	1	1	60
FORGERY	1	0	0	1	0	0	0	0	2
FRAUD	1	0	0	6	0	0	0	1	8
HARASSMENT	0	1	0	0	0	0	0	0	1
IDENTITY THEFT	0	1	0	2	0	0	0	0	3

	Arrest Made	No Report	Referred	Report Taken	Ticket or Warning	Unfounded	Unable to Locate	Others	Total
LEAVING THE SCENE FOLLOW UP	0	5	2	0	0	0	0	0	7
LOST PROPERTY	0	3	0	2	0	0	0	0	5
MEDICAL ASSIST	0	0	9	0	0	0	0	9	18
MISSING PERSON	0	1	0	1	0	0	0	0	2
MOTORIST ASSISTANCE	0	1	0	0	1	0	1	0	3
POLICE ORDINANCE VIOLATION	0	14	0	0	10	1	4	1	30
PUB SERV PD	0	13	1	1	0	0	0	1	16
PUBLIC INTOXICATION	0	1	0	0	0	0	1	0	2
QUALITY OF LIFE	0	0	1	0	0	0	0	0	1
RECKLESS DRIVER	0	4	0	0	1	2	1	0	8
ROBBERY IN PROGRESS	0	0	0	1	0	0	0	0	1
SHOPLIFTER IN CUSTODY	47	0	0	3	2	0	0	0	52
SHOTS FIRED	0	0	0	0	0	1	0	0	1
SUBJECT STOP	1	2	0	0	0	0	0	0	3
SUBJECT WITH GUN	0	0	0	0	0	0	1	0	1
SUSPICIOUS INCIDENT	3	26	0	2	2	1	6	3	43
THEFT IN PROGRESS	14	2	0	9	0	1	0	1	27
THEFT NOT IN PROGRESS	1	2	0	15	0	0	0	1	19
TRAFFIC HAZARD	0	1	0	0	0	0	0	1	2
VEHICLE UNLOCK W/CHILD	0	0	2	0	0	0	0	0	2
WELFARE CONCERN	0	5	0	0	1	0	7	3	16
Total	69	191	17	70	17	7	28	114	513

**DPS Blue Form* is a state auto collision report form commonly used in minor traffic collisions. If a call type (for example, "robbery") does not appear in this report, the shopping center did not receive any calls in that category.