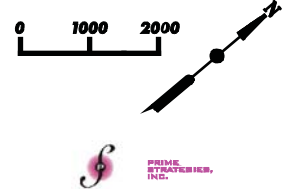


# WILLIAMSON COUNTY/ TxDOT PROPOSED PROJECTS

NOVEMBER 14, 2006



**HNTB** The HNTB Companies  
Engineers Architects Planners

**CONCEPTUAL  
SUBJECT TO CHANGE**

**RM 620 INTERSECTION SAFETY  
IMPROVEMENTS - TURNLANES**

**O'CONNOR PEDESTRIAN  
IMPROVEMENTS**

**US 79 (PALM VALLEY) EXTENSION  
(FROM EAST OF I-35 TO RM 620)**

**SHORT TERM  
IMPROVEMENTS**

**LONG TERM  
IMPROVEMENTS**

**LONG TERM  
IMPROVEMENTS**

**LEGEND**

**WILLIAMSON COUNTY  
PROPOSED PROJECTS**

PHASE 1

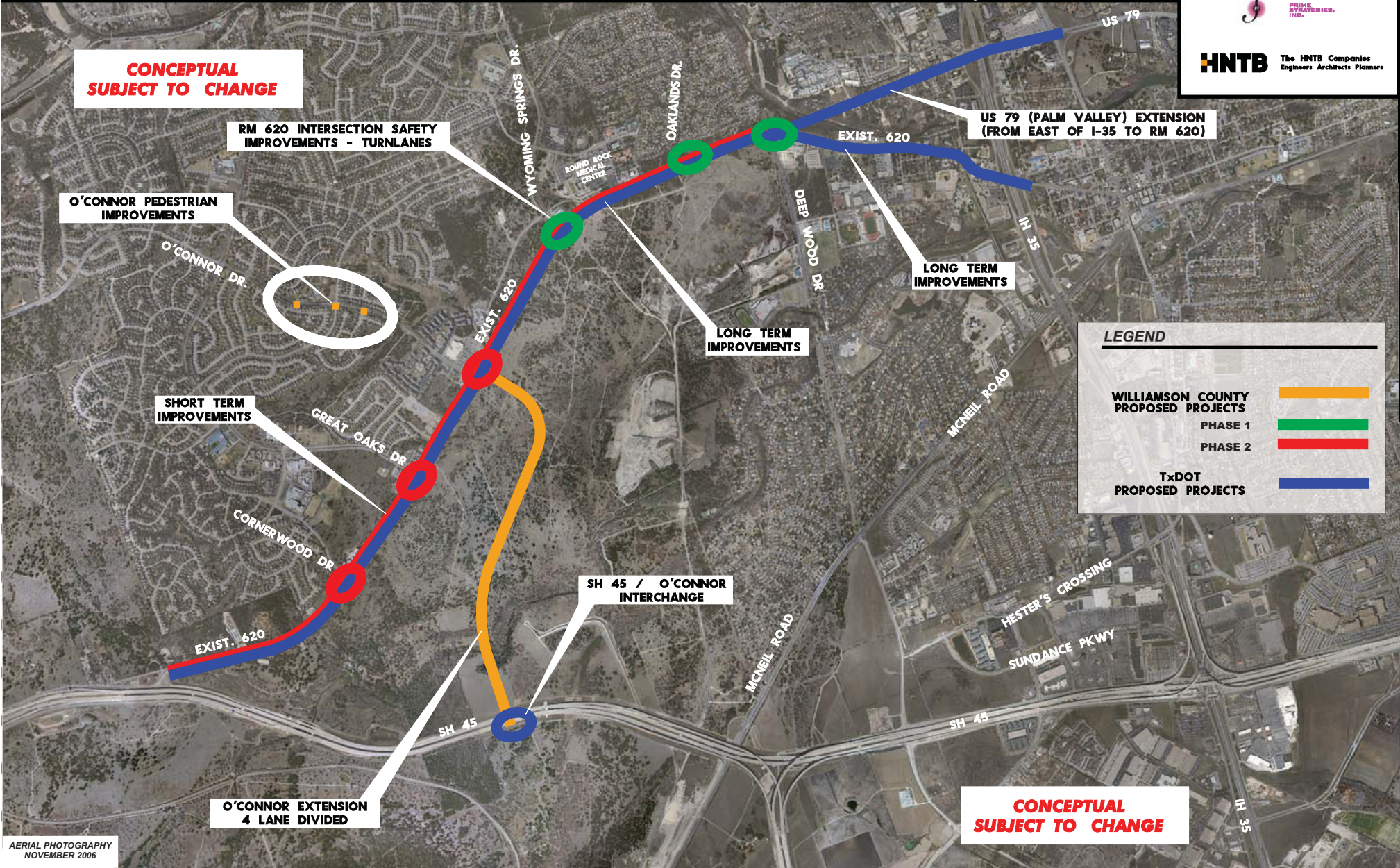
PHASE 2

**TxDOT  
PROPOSED PROJECTS**

**O'CONNOR EXTENSION  
4 LANE DIVIDED**

**SH 45 / O'CONNOR  
INTERCHANGE**

**CONCEPTUAL  
SUBJECT TO CHANGE**



### RM 620 Corridor Study (Williamson County 2001 Road Bond Program)

Limits: SH 45 to Deep Wood Drive  
Purpose: Identify long term needs and what safety and mobility improvements can be made in the interim  
Status: Completed January 2006  
Findings: Increased capacity required along RM 620 for long term traffic needs; Turn lane safety improvements should be provided in the interim.

### RM 620 Corridor Improvement Study (Texas Department of Transportation)

Limits: SH 45 to IH-35  
Purpose: Identify long term traffic needs; Complete Environmental Impact Statement (EIS) and Schematic that follows the National Environmental Policy Act (NEPA) process; Possible new alignment and connection at US 79 and IH-35  
Status: Currently under way; approximately 2-3 years for completion.

### US 79 Extension (City of Round Rock)

Limits: Deep Wood Drive to IH-35  
Purpose: Identify the feasibility of extending US 79 from IH-35 to RM 620 to provide improved east/west mobility and reduce congestion on IH-35 and RM 620  
Status: No longer pursuing; This alternative is being analyzed by TxDOT as part of their overall RM 620 corridor study from SH 45 to IH-35  
Findings: Preliminary alignments and cost estimates provided to TxDOT.

### RM 620 Interim Improvements (Williamson County)

Limits: **Phase I:** Intersections of Wyoming Springs Drive, Oaklands Drive, Deep Wood Drive  
**Phase II:** Intersections of Cornerwood Drive, Great Oaks Drive and O'Connor Boulevard and Continuous Left Turn Lane  
Purpose: To construct safety and mobility improvements at these intersections including a continuous left turn lane from Cornerwood Drive to Wyoming Springs Drive.  
Status: Currently being designed under the 2006 Road Bond Program.  
  
These improvements are proposed to be completed in FY 2008 and are being constructed now since the TxDOT corridor study will not be able to fund/complete its efforts for several years.

### O'Connor Boulevard Extension (Williamson County)

Limits: RM 620 to SH 45  
Purpose: Congestion relief for RM 620 and new connection to SH 45  
Status: Currently being designed under the 2001 Road Bond Program. Schematic and environmental nearing completion. Public hearing proposed for Summer 2008 and all environmental approvals late 2008.  
  
Williamson County Commissioners Court approved a resolution on 11/13/2007 to request that the Central Texas Regional Mobility Authority (CTRMA) conduct a financial feasibility study to explore opportunities for the financing and implementation of the O'Connor Blvd./SH 45 Toll interchange in partnership with TxDOT and the County.