



ARCHITECTS

September 9, 2016

Project: Fireball Grill at Dell Diamond

RE: Addendum 1

ITEM 1.

Sheet C-1 has been revised to clearly indicate the scope of work limit for the fire line tap and extension.

ITEM 2.

Sheet F-1 has been revised to clearly indicate the scope of work limit for connection to the fire line tap by the fire sprinkler contractor. The sprinkler contractor is responsible for this connection and extension to the riser room. The connection shall not occur under the new screen wall footing. The work shall meet all NFPA requirements.

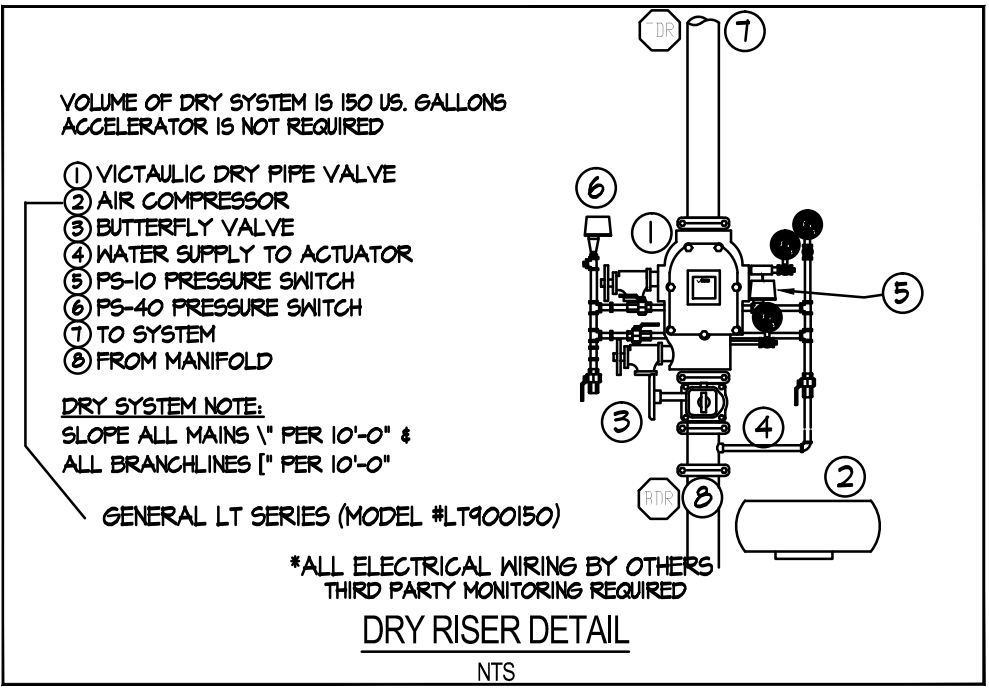
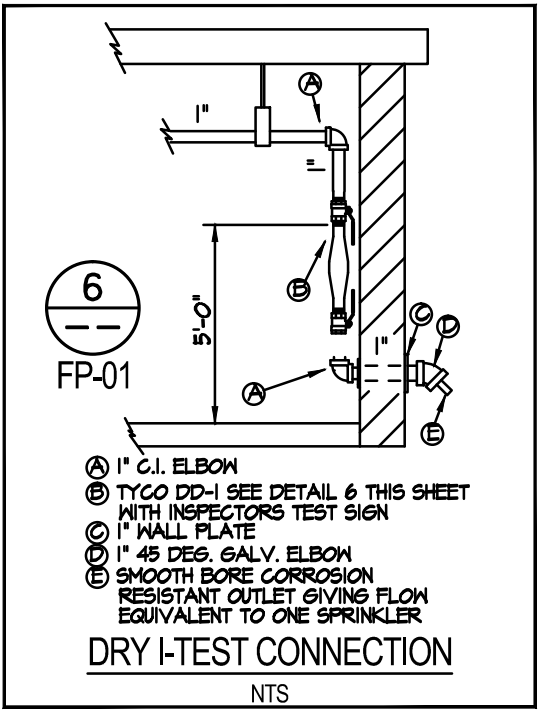
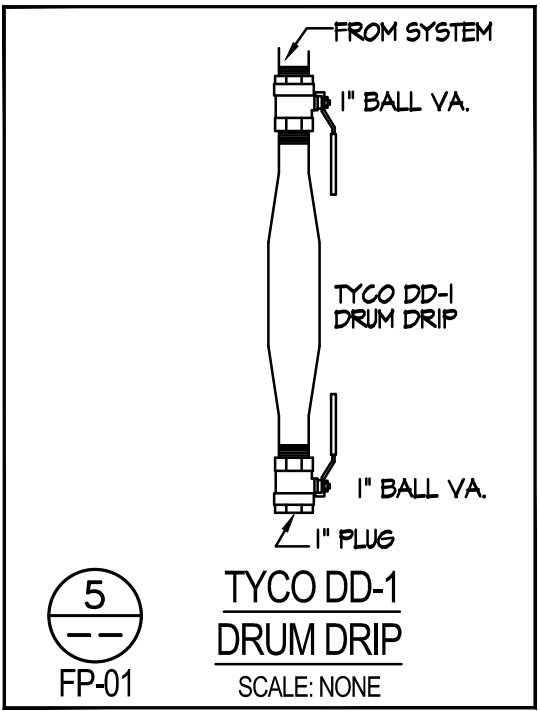
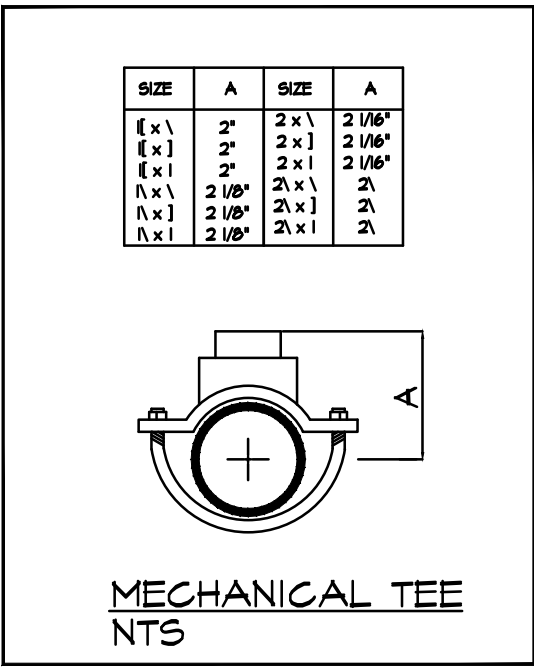
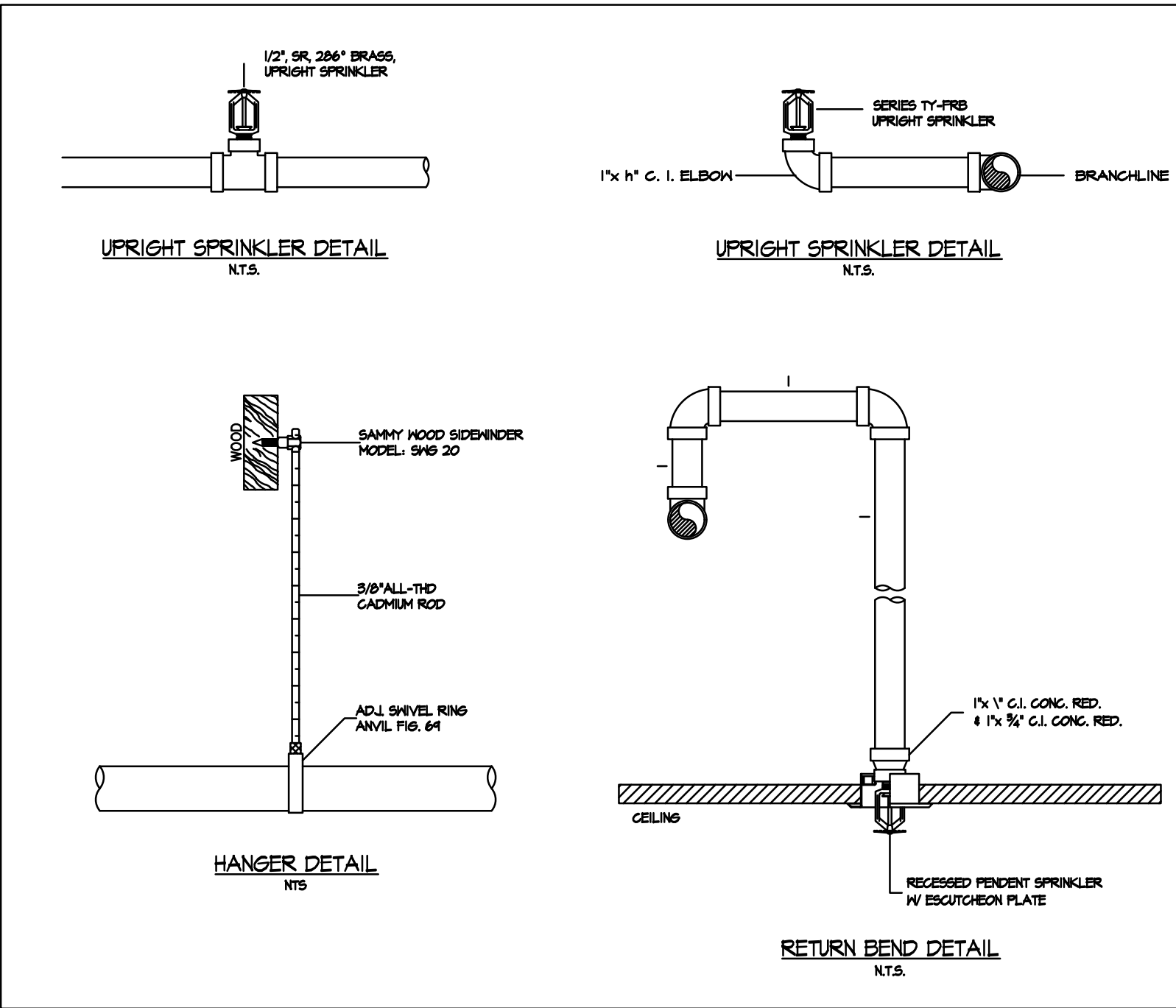
ITEM 3.

Sheet E2.1 has been revised to clearly indicate the scope of work limit for connection of the new fire alarm control panel to the existing fire alarm control panel in the Intel Club at Dell Diamond. A new fire alarm communication wire shall be provided and installed in the existing conduit from the Fireball Grill to the Heritage Center where it can be joined to the existing cabling that connects it to the Intel Club. The Fire Alarm Contractor shall provide the control wire and all connections necessary for a complete and operational system. The new system must be able to communicate with the existing Dell Diamond system.

END OF ADDEMDUM 1



09 September 2016



COOLER TEMP	MIN. EXP BARREL LEN.	COOLER TEMP	MIN. EXP BARREL LEN.
30°-40°	0"	-10°-20°	14"
20°	4"	-30°	16"
10°	8"	-40°	18"
0°	12"	-50°-60°	20"

VALUES FROM TABLE 8.4.9.1(Q)

TYP FREEZER PENETRATION

GENERAL NOTES:

- SPRINKLER CONTRACTOR TO ADD A NEW FIRE PROTECTION SYSTEM, TO PROVIDE PROPER COVERAGE TO THE BUILDING PER NFPA 13.
- THIS IS A NEW BUILDING OF NON COMBUSTIBLE CONSTRUCTION, PRE ENGINEERED MTL BUILDING.
- DESIGN AND INSTALLATION TO BE PER NFPA 13 2013 EDITION AND THE ROUND ROCK FIRE MARSHAL'S OFFICE.
- SYSTEM DESIGNED TO LIGHT / ORDINARY HAZARD GRP I OCCUPANCY. MAXIMUM OH SPACING IS 130 SQ FT. FOR STANDARD HEADS. MAXIMUM LH SPACING IS 225 SQ FT. FOR STANDARD HEADS 14' X 14' MAX.
- PIPING TO BE AS FOLLOWS:
THREADED PIPE: 1" - 1.25" TO BE BLK. SCH. 30 STL. THREADED PIPE WITH BLACK D.I. OR C.I. GLASS 125 THREADED FITTINGS.
GROOVED PIPE: 1.5" AND LARGER TO BE SCHEDULE 10
UPRIGHT SPRINKLER DEFLECTORS TO BE MAX. 12" BELOW BOTTOM OF DECK U.N.O.
- HANGERS TO BE INSTALLED PER N.F.P.A. #13.
- THREADED BRANCH LINE PIPING HAVE "CENTER-CENTER" DIMENSIONS (U.N.O).

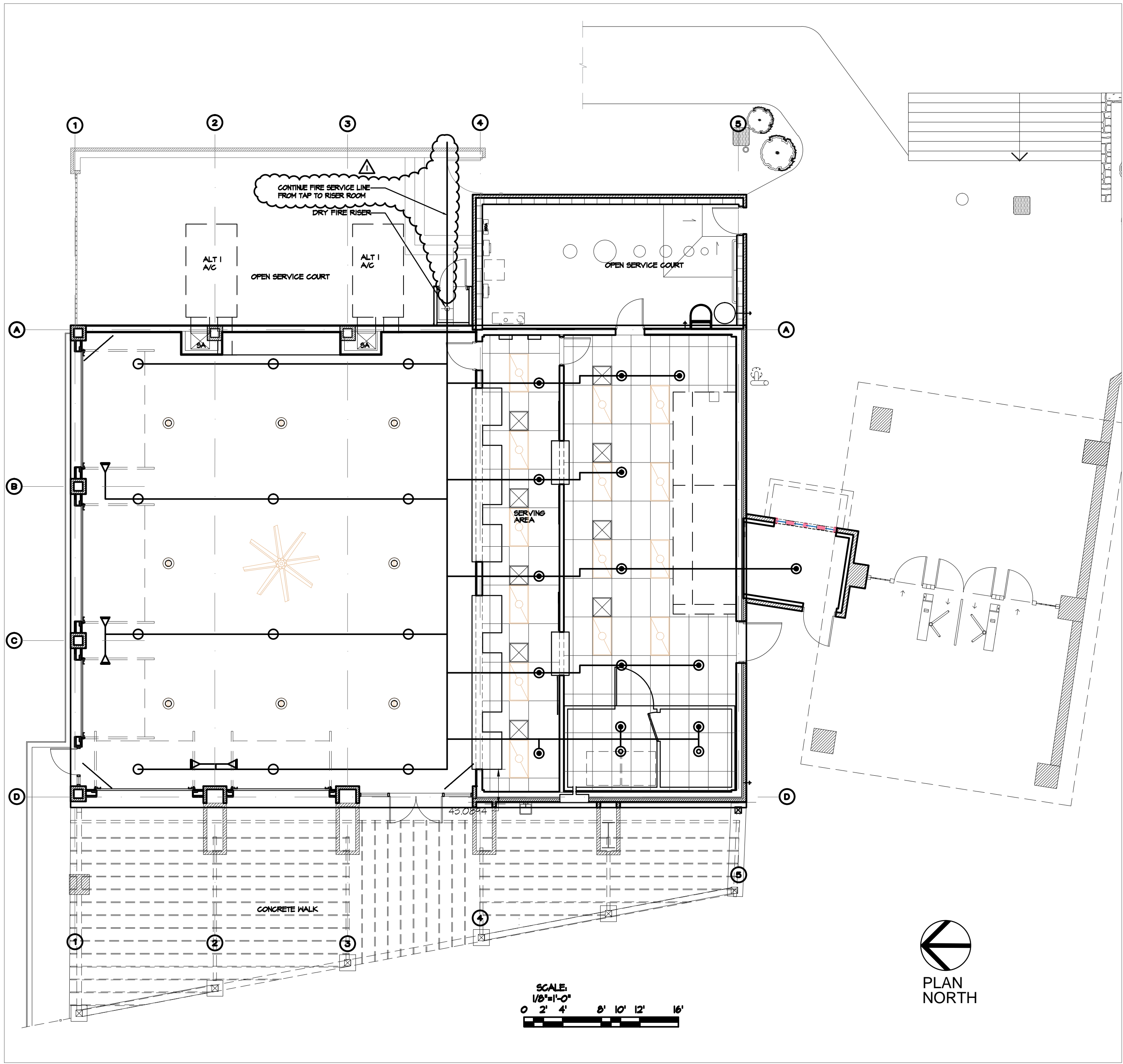
NOTES

IN LOCATIONS SUBJECT TO FREEZING CONDITIONS, IT IS THE OWNERS RESPONSIBILITY TO PROVIDE HEAT THROUGHOUT WET SPRINKLER SYSTEM AREAS AND IN ENCLOSURES FOR DRY PIPE, DELUGE, AND OTHER TYPES OF SPRINKLER SYSTEMS.

SPRINKLER SYSTEM SHALL BE DESIGNED AND INSTALLED PER NFPA-13 AND APPLICABLE CODES. ALL SPRINKLER HEAD AND HANGER LOCATIONS ARE SUBJECT TO CHANGE DUE TO FIELD CONDITIONS TO MEET NFPA-13. SPRINKLER HEADS TO BE IN ALIGNMENT ONLY, NO CENTER OF TILE UNLESS OTHERWISE NOTED. SPRINKLER HEADS MAY BE DRAWN TO APPEAR TO BE CENTER OF TILE, THIS DOES NOT MEAN ACTUAL CENTER OF TILE, UNLESS OTHERWISE NOTED.

THIS DRAWING, DESIGN, AND INFORMATION CONTAINED HEREIN ARE THE SOLE PROPERTY OF FIRE KING, LLC AND IS LOANED UPON THE EXPRESS CONDITION THAT THE SAME BE RETURNED TO FIRE KING, LLC. UPON REQUEST. NO REPRODUCTION OF THIS DRAWING, INFORMATION OR ANY PART THEREOF SHALL BE MADE WITHOUT THE WRITTEN CONSENT OF FIRE KING, LLC.

THIS CONTRACT DOES NOT INCLUDE ANY MATERIAL OR DEVICE TO IMPROVE THE STRUCTURAL STRENGTH OF THE BUILDING TO ENABLE IT TO CARRY THE LOAD OF THE FIRE SPRINKLER SYSTEM.



1 SCHEMATIC FIRE PROTECTION PLAN
1/8"=1'-0"

Symbol	Description
○	Hydraulic Reference Points
[3'-0"]	Elev. Above Finished Floor
48" BTS	Elev. Below Top of Steel
[3'-0" TOS]	Elev. of Top of Steel
—/—	Denotes Hanger Location
—X—	Denotes Trapeze Hanger Location
○	Rise up or down
---	Existing Piping
---	New Piping

ABBREVIATIONS	
AOS	Adjusted on Site
BOB	Bottom of Beam
BOD	Bottom of Deck
BOP	Bottom of Pipe
FDC	Fire Dept. Connection
HV	Hose Valve
N&C	Nipple and Cap
NIC	Not In Contract
NTS	Not to Scale
OBJ	Open Bar Joist
PRV	Pressure Red. Valve
RM	Root Manifold
SP	Standpipe
TOB	Top of Beam
TOP	Top of Pipe
TOS	Top of Steel
UNO	Unless Noted Otherwise

MAINS	
SCHEDULE 40	<input checked="" type="checkbox"/>
SCHEDULE 10	<input type="checkbox"/>
DYNA-FLOW	<input type="checkbox"/>
DYNA-THREAD	<input type="checkbox"/>
XL / BLT	<input type="checkbox"/>
GALVANIZED	<input type="checkbox"/>
CFVC	<input type="checkbox"/>
FITTINGS	
THREADED	<input checked="" type="checkbox"/>
WELDED	<input checked="" type="checkbox"/>
GROOVED	<input checked="" type="checkbox"/>
CEMENT	<input type="checkbox"/>
FITT	<input type="checkbox"/>

SPRINKLER HEAD LEGEND											
SYMBOL	MAKE	MODEL	TYPE	SIN	FINISH	OR.	NPT.	TEMP.	K	RESP.	
○	TYCO	TY-FRB	UPRIGHT	TY313	BRASS	1/2	1/2	155	5.6	QR	12
⊙	TYCO	TY-FRB	DRY PEND WALL	TY 3355	BRASS	1/2	1	155	5.6	QR	2
⊙	TYCO	TY-FRB	RECESSED PENDENT	TY323	CHROME	1/2	1/2	155	5.6	QR	11
◁	TYCO	TY-FRB	RECESSED SIDEWALL	TY3331	CHROME	1/2	1/2	155	5.6	QR	5
TOTAL THIS SHEET:											30
PERMIT #											

DATE
REVISED: 04SEP16

CITY OF
ROUND ROCK
FIREBALL GRILL
3400 E. PALM VALLEY BLVD.
ROUND ROCK, TEXAS, 78668 1

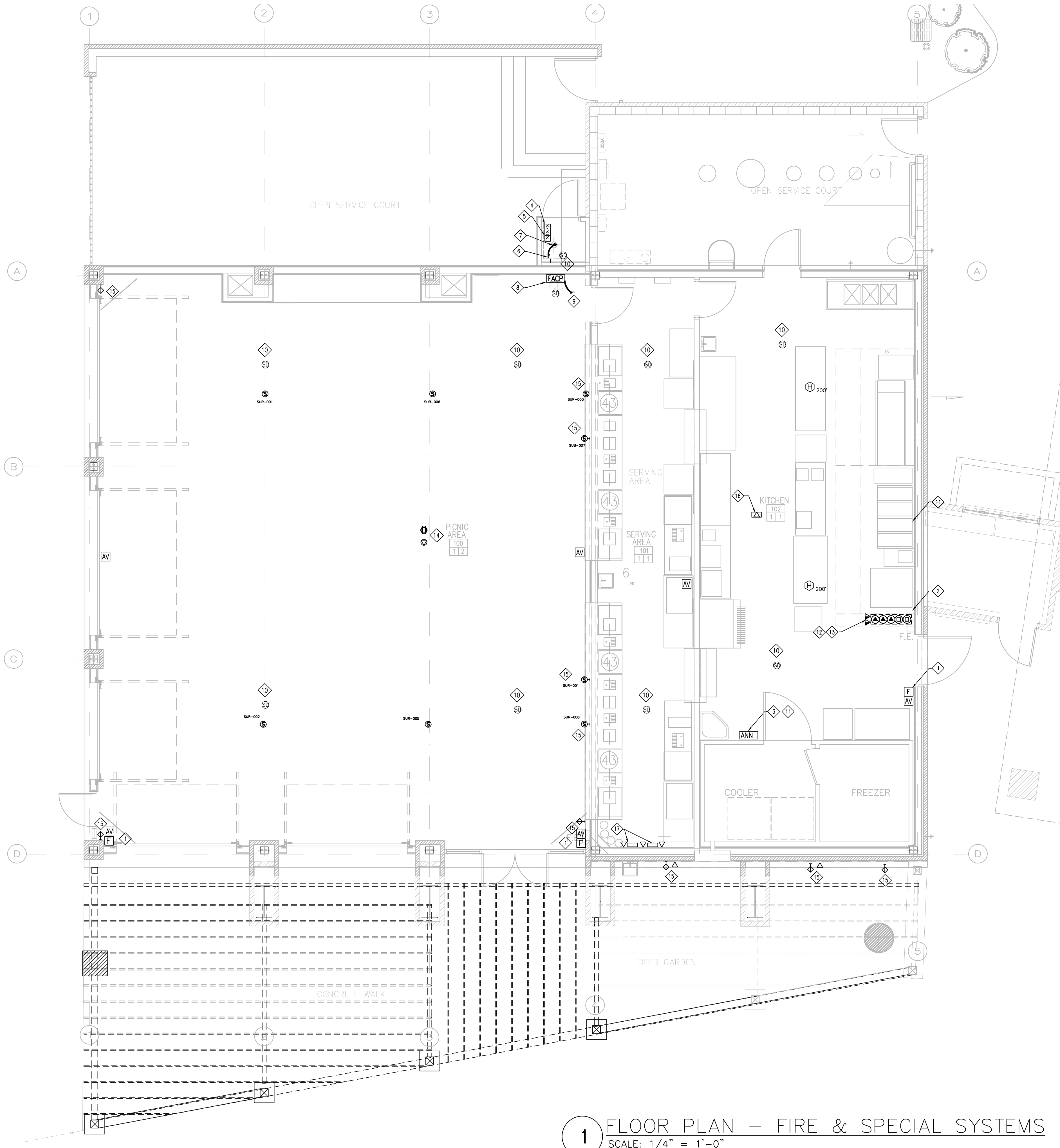


Reill
REILL
ARCHITECTS
P.O. BOX 4361
HORSESHOE BAY, TX 78657
(830) 548-1082
(512) 621-6945 CELL
rgill@reilljr.com

08/25/2016

PROJECT NO.:
4026

SHEET NUMBER
F1.0
FIRE PROTECTION
PLAN



1 FLOOR PLAN – FIRE & SPECIAL SYSTEMS
SCALE: 1/4" = 1'-0"

GENERAL NOTES:

A. THE CONTRACTOR SHALL PROVIDE ANY REQUIRED LOW VOLTAGE CONTROL WIRING (TYPICALLY: 2 #18 AWG CU, UNLESS OTHERWISE NOTED) INSTALLED IN CONDUIT FOR THE CAPTIVE AIR HOOD CONTROLS, MAKE UP AIR UNIT (SUPPLY FAN), EXHAUST FANS, AND ALL OTHER ASSOCIATED HOOD EQUIPMENT FOR PROPER OPERATION OF THE HOOD SYSTEM INCLUDING THE HOOD FIRE SUPPRESSION SYSTEM. THE CONTRACTOR SHALL REFER TO THE CAPTIVE AIR CONTROL PANEL WIRING DIAGRAMS AND DETAILS ON M2.7 AND M2.9. CAPTIVE AIR PROVIDES SOME LOW VOLTAGE WIRING FOR INSTALLATION BY THE CONTRACTOR AND MAY BE PRE-WIRED WITHIN THE HOOD EQUIPMENT.

NOTE: FIRE ALARM SYSTEM AND ALL OF ITS COMPONENTS ARE PART OF ALTERNATIVE # 3.

KEYED ELECTRICAL NOTES

- COORDINATE EXACT LOCATION/REQUIREMENTS FOR ANSUL FIRE PROTECTION SYSTEM PULL-STATION WITH THE OWNER AND HOOD MANUFACTURER. REFER TO THE MECHANICAL/PLUMBING AND CAPTIVE AIR DRAWINGS FOR DETAILS.
- PROVIDE 1" C TO ABOVE ACCESSIBLE CEILING FROM ANSUL SYSTEM PANEL. COORDINATE ALL REQUIREMENTS WITH KITCHEN CONTRACTOR.
- INSTALL FIRE ALARM REMOTE ANNUNCIATOR & AUDIO VISUAL DEVICES PER CODE. CONNECT TO MAIN FIRE ALARM CONTROL PANEL IN FIRE RISER CLOSET. PROVIDE F.A. WIRING PER MANUFACTURERS REQUIREMENTS. PROVIDE MINIMUM 3/4" CONDUIT FOR ALL FIRE ALARM WIRING. FIRE ALARM DEVICES SHALL BE WEATHER PROOFED.
- FLOW SWITCH FURNISHED BY DIVISION 15. CONNECTION AND WIRING TO FACP BY ELECTRICAL CONTRACTOR.
- TAMPER SWITCH FURNISHED BY DIVISION 15. CONNECTION AND WIRING TO FACP BY ELECTRICAL CONTRACTOR.
- PROVIDE A DEDICATED CIRCUIT WITH A MANUAL TOGGLE SWITCH FOR THE WALL MOUNTED AUXILIARY HEATER. CONTRACTOR TO VERIFY LOCATION.
- INSTALL A MARKEL #E-2907-040S ELECTRIC HEATER IN FIRE RISER CLOSET.
- FIRE ALARM MONITORING CONTROL PANEL FOR FIRE SPRINKLER SYSTEM MONITORING AND FOR CONNECTION OF FIRE SPRINKLER TAMPER & FLOW SWITCHES. CONNECT DEVICES TO A F.A. PANEL PER IECC2009 & NFPA 72, & 13. INSTALL NECESSARY CONDUITS IN EXISTING CONDUIT VIA MERTAGE BUILDING TO CONNECT FIRE ALARM CONTROL PANEL TO MAIN FIRE ALARM CONTROL PANEL AT INTEC CLUB.
- PROVIDE A DEDICATED TELEPHONE LINE FOR FIRE ALARM CONTROL PANEL MONITORING OF FIRE SPRINKLER ALARM SYSTEM PER NFPA 72. FURNISH FACP WITH AUTOMATIC DIALER.
- CEILING MOUNTED SMOKE DETECTOR. CONNECT TO FIRE ALARM MONITORING PANEL FIRE ALARM ZONE.
- DIVISION 16 SHALL PROVIDE BUILDING STANDARD, U.L. LISTED, STAND ALONE, 120V DUCT SMOKE DETECTOR AND INTERLOCK WITH MECHANICAL UNIT TO SHUT DOWN SUPPLY FAN AND AC UNITS UPON ALARM ACTIVATION OF DUCT DETECTOR. PROVIDE AUDIBLE/VISIBLE ANNUNCIATOR FOR EACH DUCT SMOKE DETECTOR PER NFPA 90A AND FLUSH MOUNT IN TENANT SPACE CEILING ABOVE UNIT. UTILIZE CIRCUIT KP-34 FOR DETECTOR POWER. PROVIDE 'SYSTEM SENSOR/INNOVAIR' #D4120 (DETECTOR), #APA151 (ANNUNCIATOR), AND #DST* (SAMPLING TUBE) OR APPROVED EQUAL. COORDINATE INSTALLATION WITH DIVISION 15 CONTRACTOR.
- PROVIDE A 3/4" CONDUIT WITH CAT 5 CABLING FROM THE HOOD CONTROL PANEL TO THE TELEPHONE TERMINAL BACKBOARD FOR CONNECTION TO A LOCAL AREA NETWORK OR ROUTER. REFER TO THE CAPTIVE AIR HOOD CONTROL WIRING DIAGRAMS ON DRAWING M2.7 FOR COMPLETE REQUIREMENTS. THIS REQUIREMENT IS OPTIONAL PER THE OWNER'S DIRECTIVE. COORDINATE WITH OWNER BEFORE INSTALLATION OF CONDUIT OR CABLING.
- PROVIDE A 3/4" CONDUIT WITH A BELDEN #887667 CABLE FOR THE HOOD CORE FIRE CONTROL WORLD WIDE WEB COMMUNICATIONS. EXTEND CABLE TO THE TELEPHONE TERMINAL BACKBOARD FOR CONNECTION TO THE LAN "NETWORK". REFER TO THE CAPTIVE AIR HOOD CONTROL DIAGRAMS FOR COMPLETE REQUIREMENTS.
- INSTALL WIRELESS ROUTER AT BEAM.
- INSTALL AT 96" A.F.F.
- MODEM/ROUTER- WIRELESS ACCESS POINT.

SYMBOLS LEGEND

- SD SMOKE DETECTOR
- FACP FIRE ALARM CONTROL PANEL
- F FIRE ALARM MANUAL PULL STATION
- ANN FIRE ALARM REMOTE ANNUNCIATOR
- AV FIRE ALARM AUDIO/VISUAL DEVICE
- H 200F FIXED 200F HEAT DETECTOR
- VOICE & DATA - CLG MTD
- CATV - WALL MTD

FIRM REG. # 10927

ELECTRICAL

ANIS ENGINEERED SOLUTIONS, INC.

10900 RANCH RD 23-41

BURNET, TX 78611

OFFICE: (512) 484-5018

THE TEXAS BOARD OF PROFESSIONAL ENGINEERS HAS JURISDICTION REGARDING THE PROFESSIONAL PRACTICE OF PERSONS REGISTERED AS PROFESSIONAL ENGINEERS IN THE STATE OF TEXAS.

TEXAS BOARD OF PROFESSIONAL ENGINEERS

1917 W. 35 SOUTH AUSTIN, TX 78741-3702

STATE OF TEXAS

HENRY ROMO, JR.

91435

REGISTERED PROFESSIONAL ENGINEER

SIGNED: *Henry Romo, Jr.*

DATE: AUG. 10, 2016

CITY OF

ROUND ROCK

FIREBALL GRILL

3400 E. PALM VALLEY BLVD.

ROUND ROCK, TEXAS, 78681

Fireball Grill

EXPRESS

R. GILL

ARCHITECTS

P.O. BOX 4367

HORSESHOE BAY, TX 78657

(830) 598-1082

(512) 627-6995 CELL

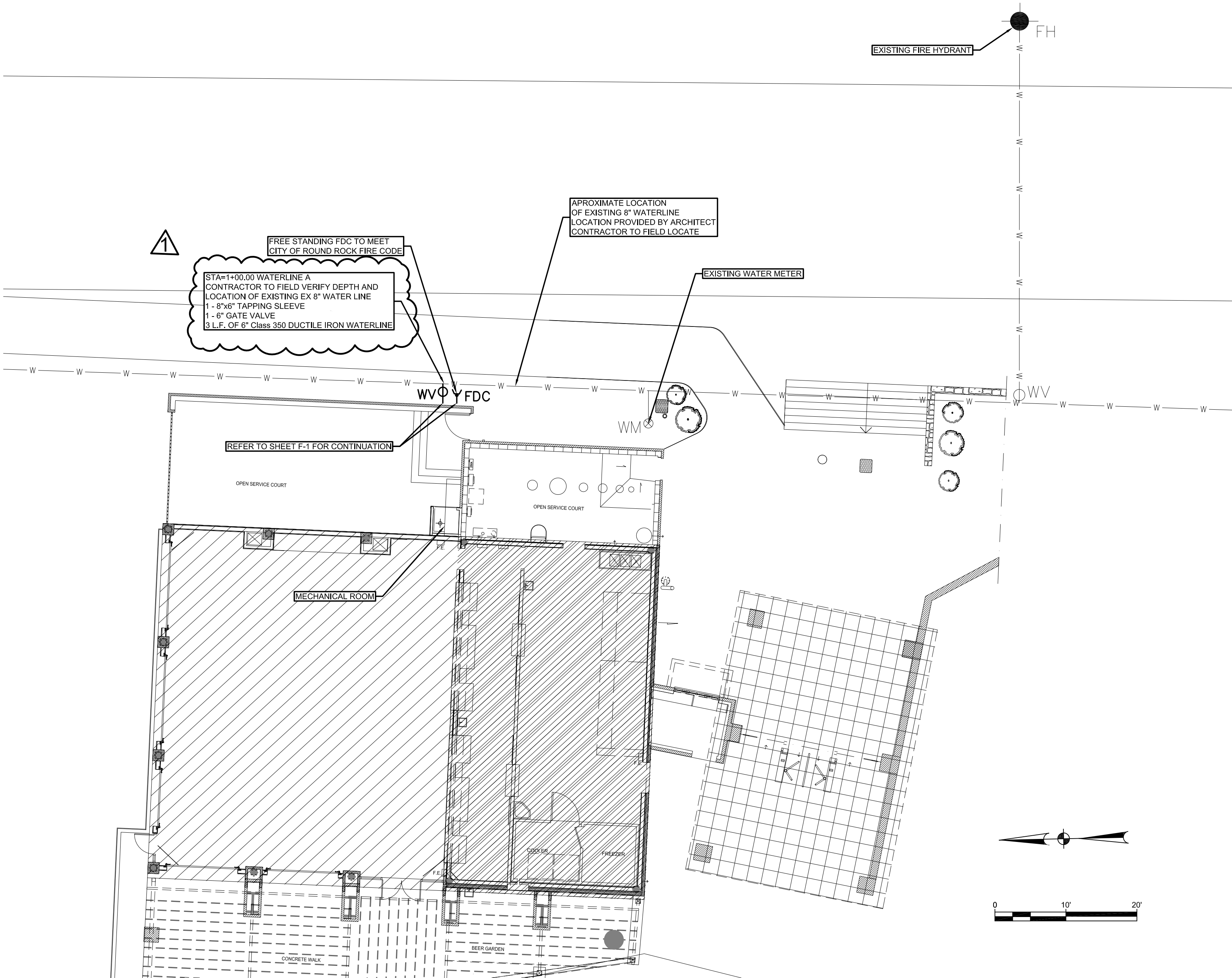
rgill@raygilljr.com

08/01/2016

PROJECT NO.: 4026

SHEET NUMBER

E-2.1

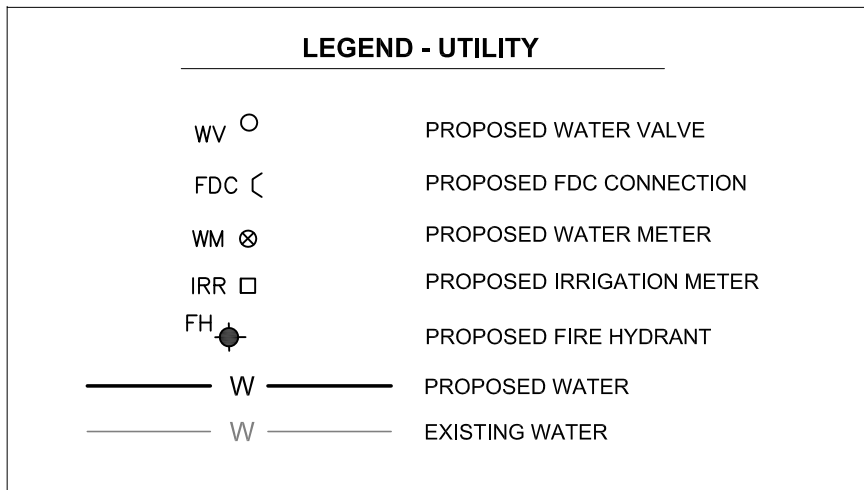
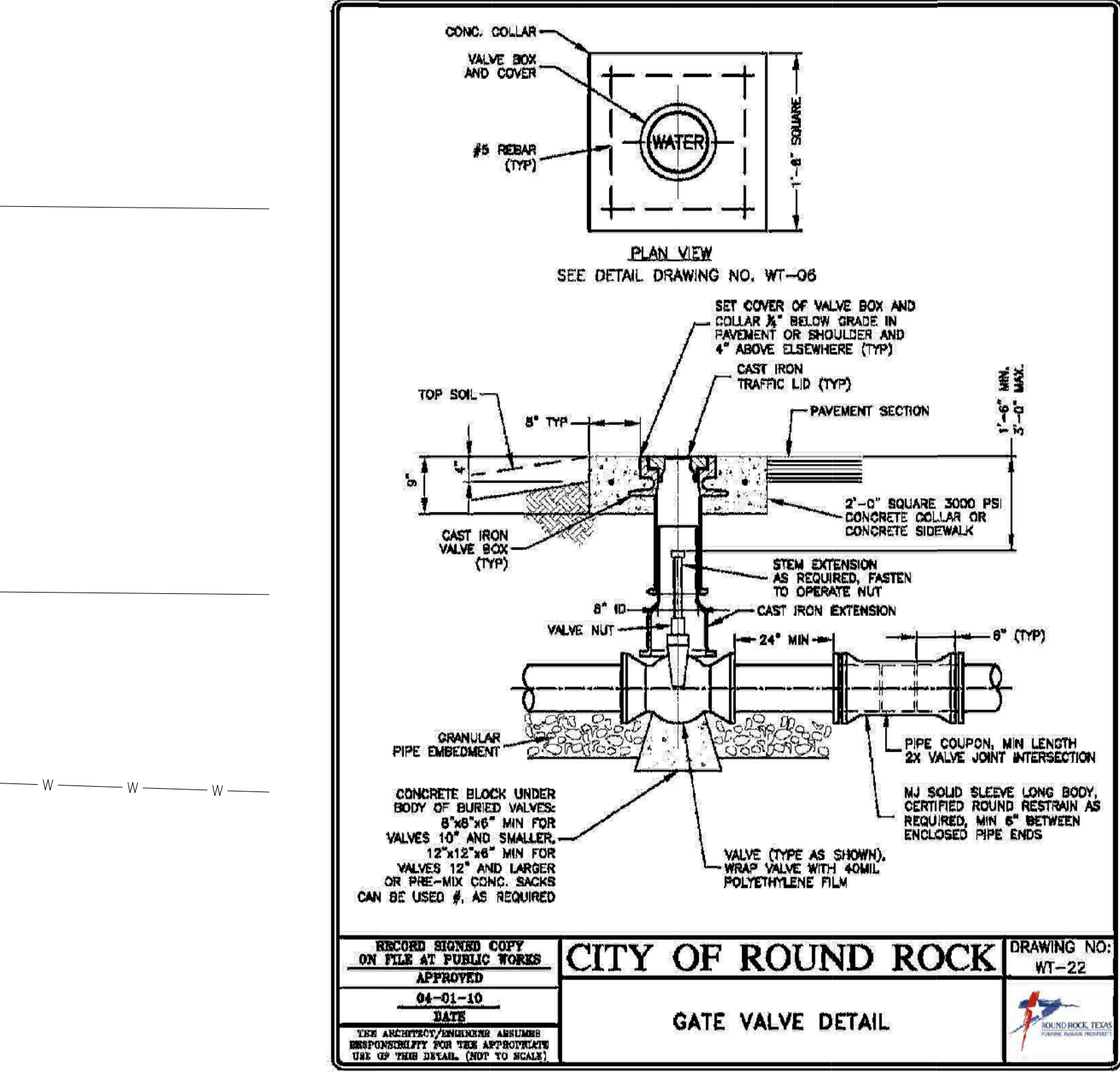


- GENERAL NOTES:**
- ALL CONSTRUCTION SHALL BE IN ACCORDANCE WITH THE CITY OF ROUND ROCK STANDARD SPECIFICATIONS MANUAL.
 - ANY EXISTING UTILITIES, PAVEMENT, CURBS, SIDEWALKS, STRUCTURES, TREES, ETC., NOT PLANNED FOR DESTRUCTION OR REMOVAL THAT ARE DAMAGED OR REMOVED SHALL BE REPAIRED OR REPLACED AT CONTRACTOR'S EXPENSE.
 - THE CONTRACTOR SHALL VERIFY ALL DEPTHS AND LOCATIONS OF EXISTING UTILITIES PRIOR TO ANY CONSTRUCTION, ANY DISCREPANCIES WITH THE CONSTRUCTION PLANS FOUND IN THE FIELD SHALL BE BROUGHT IMMEDIATELY TO THE ATTENTION OF THE ENGINEER WHO SHALL BE RESPONSIBLE FOR REVISING THE PLANS ARE APPROPRIATE.
 - MANHOLE FRAMES, COVERS, VALVES, CLEANOUTS, ETC. SHALL BE RAISED TO FINISHED GRADE PRIOR TO FINAL PAVING CONSTRUCTION.
 - THE CONTRACTOR SHALL GIVE THE CITY OF ROUND ROCK 48 HOURS NOTICE BEFORE BEGINNING EACH PHASE OF CONSTRUCTION. TELEPHONE 218-5555 (ENGINEERING AND DEVELOPMENT SERVICES DEPARTMENT).
 - ALL AREAS DISTURBED OR EXPOSED DURING CONSTRUCTION SHALL BE REVEGETATED IN ACCORDANCE WITH THE PLANS AND SPECIFICATIONS. REVEGETATION OF ALL DISTURBED OR EXPOSED AREAS SHALL CONSIST OF SODDING OR SEEDING. AT THE CONTRACTOR'S OPTION, HOWEVER, THE TYPE OF REVEGETATION MUST EQUAL OR EXCEED THE TYPE OF VEGETATION PRESENT BEFORE CONSTRUCTION.
 - PRIOR TO ANY CONSTRUCTION, THE ENGINEER SHALL CONVENE A PRECONSTRUCTION CONFERENCE BETWEEN THE CITY OF ROUND ROCK, HIMSELF, THE CONTRACTOR, OTHER UTILITY COMPANIES, ANY AFFECTED PARTIES AND ANY OTHER ENTITY THE CITY OR ENGINEER MAY REQUIRE.
 - THE CONTRACTOR AND THE ENGINEER SHALL KEEP ACCURATE RECORDS OF ALL CONSTRUCTION THAT DEVIATES FROM THE PLANS. THE ENGINEER SHALL FURNISH THE CITY OF ROUND ROCK ACCURATE "AS-BUILT" DRAWINGS FOLLOWING COMPLETION OF ALL CONSTRUCTION. THESE "AS-BUILT" DRAWINGS SHALL MEET WITH THE SATISFACTION OF THE ENGINEERING AND DEVELOPMENT SERVICES DEPARTMENT PRIOR TO FINAL ACCEPTANCE.
 - THE ROUND ROCK CITY COUNCIL SHALL NOT BE PETITIONED FOR ACCEPTANCE UNTIL ALL NECESSARY EASEMENT DOCUMENTS HAVE BEEN SIGNED AND RECORDED.
 - WHEN CONSTRUCTION IS BEING CARRIED OUT WITHIN EASEMENTS, THE CONTRACTOR SHALL CONFINE HIS WORK TO WITHIN THE PERMANENT AND ANY TEMPORARY EASEMENTS. PRIOR TO FINAL ACCEPTANCE, THE CONTRACTOR SHALL BE RESPONSIBLE FOR REMOVING ALL TRASH AND DEBRIS WITHIN THE PERMANENT AND TEMPORARY EASEMENTS. CLEAN-UP SHALL BE TO THE SATISFACTION OF THE CITY ENGINEER.
 - PRIOR TO ANY CONSTRUCTION, THE CONTRACTOR SHALL APPLY FOR AND SECURE ALL PROPER PERMITS FROM THE APPROPRIATE AUTHORITIES.

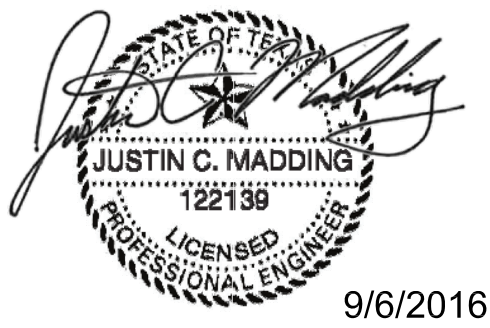
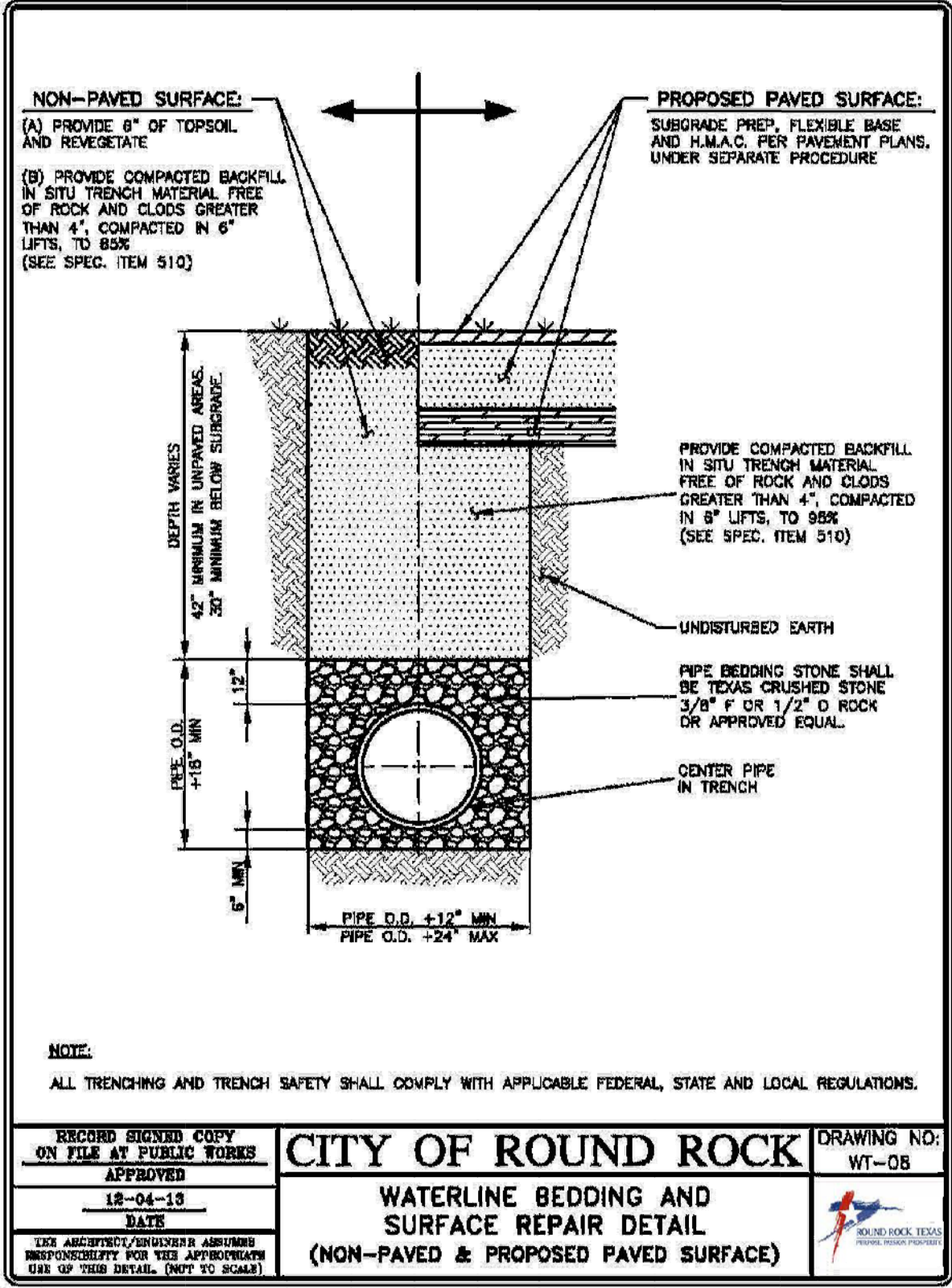
- TRENCH SAFETY NOTES:**
- IN ACCORDANCE WITH THE LAWS OF THE STATE OF TEXAS AND THE U. S. OCCUPATIONAL SAFETY AND HEALTH ADMINISTRATION REGULATIONS, ALL TRENCHES OVER 5 FEET IN DEPTH IN EITHER HARD AND COMPACT OR SOFT AND UNSTABLE SOIL SHALL BE SLOPED, SHORED, SHEETED, BRACED OR OTHERWISE SUPPORTED. FURTHERMORE, ALL TRENCHES LESS THAN 5 FEET IN DEPTH SHALL ALSO BE EFFECTIVELY PROTECTED WHEN HAZARDOUS GROUND MOVEMENT MAY BE EXPECTED. TRENCH SAFETY SYSTEMS TO BE UTILIZED FOR THIS PROJECT WILL BE PROVIDED BY THE CONTRACTOR.
 - IN ACCORDANCE WITH THE U. S. OCCUPATIONAL SAFETY AND HEALTH ADMINISTRATION REGULATIONS, WHEN PERSONS ARE IN TRENCHES 4-FEET DEEP OR MORE, ADEQUATE MEANS OF EXIT, SUCH AS A LADDER OR STEPS, MUST BE PROVIDED AND LOCATED SO AS TO REQUIRE NO MORE THAN 25 FEET OF LATERAL TRAVEL.

- IF TRENCH SAFETY SYSTEM DETAILS WERE NOT PROVIDED IN THE PLANS BECAUSE TRENCHES WERE ANTICIPATED TO BE LESS THAN 5 FEET IN DEPTH AND DURING CONSTRUCTION IT IS FOUND THAT TRENCHES ARE IN FACT 5 FEET OR MORE IN DEPTH OR TRENCHES LESS THAN 5 FEET IN DEPTH ARE IN AN AREA WHERE HAZARDOUS GROUND MOVEMENT IS EXPECTED, ALL CONSTRUCTION SHALL CEASE. THE TRENCHED AREA SHALL BE BARRICADED AND THE ENGINEER NOTIFIED IMMEDIATELY. CONSTRUCTION SHALL NOT RESUME UNTIL APPROPRIATE TRENCH SAFETY SYSTEM DETAILS, AS DESIGNED BY A PROFESSIONAL ENGINEER, ARE RETAINED AND COPIES SUBMITTED TO THE CITY OF ROUND ROCK.

- WATER NOTES:**
- PIPE MATERIAL FOR WATER MAINS SHALL BE PVC (AWWA C-900, MIN. CLASS 200), OR DUCTILE IRON (AWWA C-100, MIN. CLASS 200). WATER SERVICES (2" OR LESS) SHALL BE POLYETHYLENE TUBING (BLACK, 200 PSI, DR 9).
 - UNLESS OTHERWISE ACCEPTED BY THE CITY ENGINEER, DEPTH OF COVER FOR ALL LINES OUT OF THE PAVEMENT SHALL BE 42" MIN., AND DEPTH OF COVER FOR ALL LINES UNDER PAVEMENT SHALL BE A MIN. OF 30" BELOW SUBGRADE.
 - ALL FIRE HYDRANT LEADS SHALL BE DUCTILE IRON PIPE (AWWA C-100, MIN. CLASS 200).
 - ALL IRON PIPE AND FITTINGS SHALL BE WRAPPED WITH MINIMUM 8-MIL POLYETHYLENE AND SEALED WITH DUCT TAPE OR EQUAL ACCEPTED BY THE CITY ENGINEER.
 - THE CONTRACTOR SHALL CONTACT THE CITY INSPECTOR AT 218-5555 TO COORDINATE UTILITY TIE-INS AND NOTIFY HIM AT LEAST 48 HOURS PRIOR TO CONNECTING TO EXISTING LINES.
 - THE CONTRACTOR MUST OBTAIN A BULK WATER PERMIT OR PURCHASE AND INSTALL A WATER METER FOR ALL WATER USED DURING CONSTRUCTION. A COPY OF THIS PERMIT MUST BE CARRIED AT ALL TIMES BY ALL WHO USE WATER.
 - LINE FLUSHING OR ANY ACTIVITY USING A LARGE QUANTITY OF WATER MUST BE SCHEDULED WITH THE WATER & WASTEWATER SUPERINTENDENT, TELEPHONE 218-5555.
 - THE CONTRACTOR, AT HIS EXPENSE, SHALL PERFORM STERILIZATION OF ALL POTABLE WATER LINES CONSTRUCTED AND SHALL PROVIDE ALL EQUIPMENT (INCLUDING TEST GAUGES), SUPPLIES (INCLUDING CONCENTRATED CHLORINE DISINFECTING MATERIAL), AND NECESSARY LABOR REQUIRED FOR THE STERILIZATION PROCEDURE. THE STERILIZATION PROCEDURE SHALL BE MONITORED BY CITY OF ROUND ROCK PERSONNEL. WATER SAMPLES WILL BE COLLECTED BY THE CITY OF ROUND ROCK TO VERIFY EACH TREATED LINE HAS ATTAINED AN INITIAL CHLORINE CONCENTRATION OF 50 PPM, WHERE MEANS OF FLUSHING IS NECESSARY. THE CONTRACTOR, AT HIS EXPENSE, SHALL PROVIDE FLUSHING DEVICES AND REMOVE SAID DEVICES PRIOR TO FINAL ACCEPTANCE BY THE CITY OF ROUND ROCK.
 - SAMPLING TAPS SHALL BE BROUGHT UP TO 3 FEET ABOVE GRADE AND SHALL BE EASILY ACCESSIBLE FOR CITY PERSONNEL. AT THE CONTRACTOR'S REQUEST, AND IN HIS PRESENCE, SAMPLES FOR BACTERIOLOGICAL TESTING WILL BE COLLECTED BY THE CITY OF ROUND ROCK NOT LESS THAN 24 HOURS AFTER THE TREATED LINE HAS BEEN FLUSHED OF THE CONCENTRATED CHLORINE SOLUTION AND CHARGED WITH WATER APPROVED BY THE CITY. THE CONTRACTOR SHALL SUPPLY A CHECK OR MONEY ORDER, PAYABLE TO THE CITY OF ROUND ROCK, TO COVER THE FEE CHARGED FOR TESTING EACH WATER SAMPLE. CITY OF ROUND ROCK FEE AMOUNTS MAY BE OBTAINED BY CALLING THE ENGINEERING AND DEVELOPMENT SERVICES DEPARTMENT AT 218-5555.
 - THE CONTRACTOR SHALL COORDINATE TESTING WITH THE CITY OF INSPECTOR AND PROVIDE NO LESS THAN 24 HOURS NOTICE PRIOR TO PERFORMING STERILIZATION, QUALITY TESTING OR PRESSURE TESTING.
 - THE CONTRACTOR SHALL NOT OPEN OR CLOSE ANY VALVES UNLESS AUTHORIZED BY THE CITY OF ROUND ROCK.
 - ALL VALVE BOXES AND COVERS SHALL BE CAST IRON.
 - ALL WATER SERVICE, WASTEWATER SERVICE AND VALVE LOCATIONS SHALL BE APPROPRIATELY MARKED AS FOLLOWS:



- WATER SERVICE
WASTEWATER SERVICE
VALVE
- "W" ON TOP OF CURB
"S" ON TOP OF CURB
"V" ON FACE OF CURB
- TOOLS FOR MARKING THE CURB SHALL BE PROVIDED BY THE CONTRACTOR. OTHER APPROPRIATE MEANS OF MARKING SERVICE AND VALVE LOCATIONS SHALL BE PROVIDED IN AREAS WITHOUT CURBS. SUCH MEANS OF MARKING SHALL BE AS SPECIFIED BY THE ENGINEER AND ACCEPTED BY THE CITY OF ROUND ROCK.
- CONTACT CITY OF ROUND ROCK ENGINEERING AND DEVELOPMENT SERVICES DEPARTMENT AT 218-5555 FOR ASSISTANCE IN OBTAINING EXISTING WATER AND WASTEWATER LOCATIONS.
 - THE CITY OF ROUND ROCK FIRE DEPARTMENT SHALL BE NOTIFIED 48 HOURS PRIOR TO TESTING OF ANY BUILDING SPRINKLER PIPING IN ORDER THAT THE FIRE DEPARTMENT MAY MONITOR SUCH TESTING.
 - SAND, AS DESCRIBED IN SPECIFICATION ITEM 510 PIPE, SHALL NOT BE USED AS BEDDING FOR WATER AND WASTEWATER LINES. ACCEPTABLE BEDDING MATERIALS ARE PIPE BEDDING STONE, PEA GRAVEL AND IN LIEU OF SAND, A NATURALLY OCCURRING OR MANUFACTURED STONE MATERIAL CONFORMING TO ASTM C33 FOR STONE QUALITY AND MEETING THE FOLLOWING GRADATION SPECIFICATION:
- | SIEVE SIZE PERCENT | RETAINED BY WEIGHT |
|--------------------|--------------------|
| 1/2" | 0-2 |
| 3/8" | 40-85 |
| #4 | 40-85 |
| #10 | 95-100 |
- THE CONTRACTOR IS HEREBY NOTIFIED THAT CONNECTING TO, SHUTTING DOWN, OR TERMINATING EXISTING UTILITY LINES MAY HAVE TO OCCUR AT OFF-PEAK HOURS. SUCH HOURS ARE USUALLY OUTSIDE NORMAL WORKING HOURS AND POSSIBLY BETWEEN 12 A.M. AND 6 A.M.
- EROSION AND SEDIMENTATION CONTROL NOTES:**
- EROSION CONTROL MEASURES, SITE WORK AND RESTORATION WORK SHALL BE IN ACCORDANCE WITH THE CITY OF ROUND ROCK EROSION AND SEDIMENTATION CONTROL ORDINANCE.
 - ALL SLOPES SHALL BE SODDED OR SEEDED WITH APPROVED GRASS, GRASS MIXTURES OR GROUND COVER SUITABLE TO THE AREA AND SEASON IN WHICH THEY ARE APPLIED.
 - SILT FENCES, ROCK BERMS, SEDIMENTATION BASINS AND SIMILARLY RECOGNIZED TECHNIQUES AND MATERIALS SHALL BE EMPLOYED DURING CONSTRUCTION TO PREVENT POINT SOURCE SEDIMENTATION LOADING OF DOWNSTREAM FACILITIES. SUCH INSTALLATION SHALL BE REGULARLY INSPECTED BY THE CITY OF ROUND ROCK FOR EFFECTIVENESS. ADDITIONAL MEASURES MAY BE REQUIRED IF, IN THE OPINION OF THE CITY ENGINEER, THEY ARE WARRANTED.
 - ALL TEMPORARY EROSION CONTROL MEASURES SHALL NOT BE REMOVED UNTIL FINAL INSPECTION AND APPROVAL OF THE PROJECT BY THE ENGINEER. IT SHALL BE THE RESPONSIBILITY OF THE CONTRACTOR TO MAINTAIN ALL TEMPORARY EROSION CONTROL STRUCTURES AND TO REMOVE EACH STRUCTURE AS APPROVED BY THE ENGINEER.
 - ALL MUD, DIRT, ROCKS, DEBRIS, ETC., SPILLED, TRACKED OR OTHERWISE DEPOSITED ON EXISTING PAVED STREETS, DRIVES AND AREAS USED BY THE PUBLIC SHALL BE CLEANED UP IMMEDIATELY.



CIVIL ENGINEER



4030 WEST BRAKER LANE, SUITE 450
AUSTIN, TEXAS 78759-5356
TEL (512) 777-4600
FAX (512) 252-8141
TBPE FIRM #F-312



Know what's below.
Call before you dig.

THE INFORMATION SHOWN ON THESE DRAWINGS INDICATING SIZE, TYPE AND LOCATION OF UNDERGROUND, SURFACE, AND AERIAL UTILITIES IS NOT GUARANTEED TO BE EXACT OR COMPLETE. THE CONTRACTOR SHALL CONTACT THE AUSTIN AREA "ONE CALL" SYSTEM AT 1-800-344-8377 (DIG TESS) 48 HOURS PRIOR TO BEGINNING ANY EXCAVATION FOR EXISTING UTILITY LOCATIONS. THE CONTRACTOR SHALL ALSO BE FULLY RESPONSIBLE FOR FIELD VERIFYING LOCATIONS AND ELEVATIONS OF ALL EXISTING UTILITIES AFFECTED BY CONSTRUCTION FOR THIS PROJECT IN ORDER TO AVOID DAMAGING THOSE UTILITIES, AND SHALL IMMEDIATELY ARRANGE FOR REPAIR AND RESTORATION OF CONTRACTOR- DAMAGED UTILITIES TO THE UTILITY COMPANY'S APPROVAL AT THE EXPENSE OF THE CONTRACTOR.

DATE _____
REVISED: _____
CITY COMMENTS 9/6/2016



**CITY OF
ROUND ROCK**
FIREBALL GRILL
3400 E. PALM VALLEY BLVD.
ROUND ROCK, TEXAS, 78681



**R. GILL
ARCHITECTS**
P.O. BOX 4367
HORSESHOE BAY, TX 78657
(830) 598-1082
(512) 627-6995 CELL
rgill@raygilljr.com

08/10/2016

PROJECT NO.:
4026

SHEET NUMBER
C - 1
WATER TAP PLAN