

Skating Facility Needs

Practice Fields Locations

Current Number of Fields: 40+ locations at schools and parks throughout the city, however school practice facilities have severely limited time available for usage. Only 16 practice fields are located in city-owned parks and available to the public at all times.

Target Level of Service: 1 soccer/football field per 4,000 population

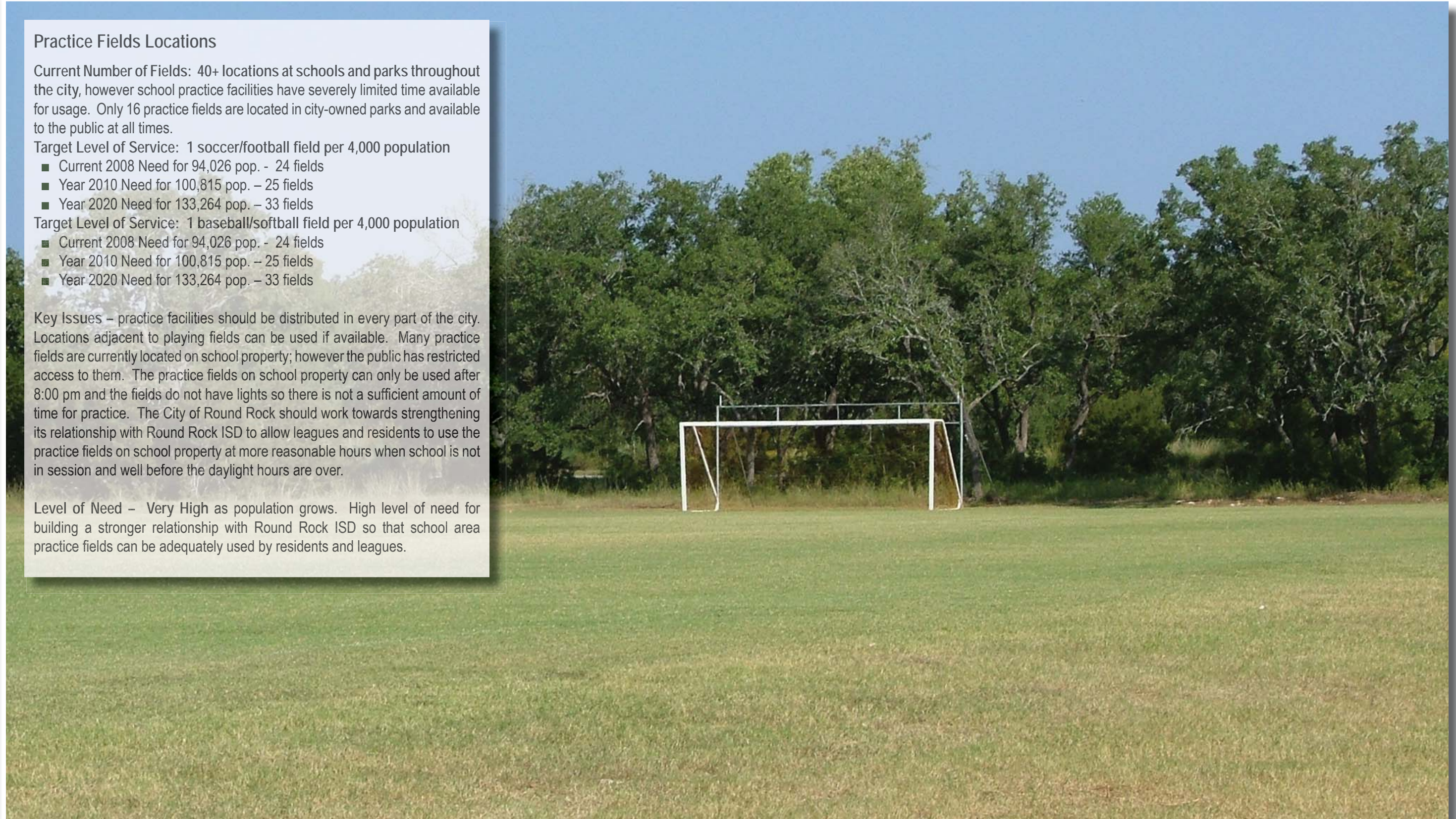
- Current 2008 Need for 94,026 pop. - 24 fields
- Year 2010 Need for 100,815 pop. – 25 fields
- Year 2020 Need for 133,264 pop. – 33 fields

Target Level of Service: 1 baseball/softball field per 4,000 population

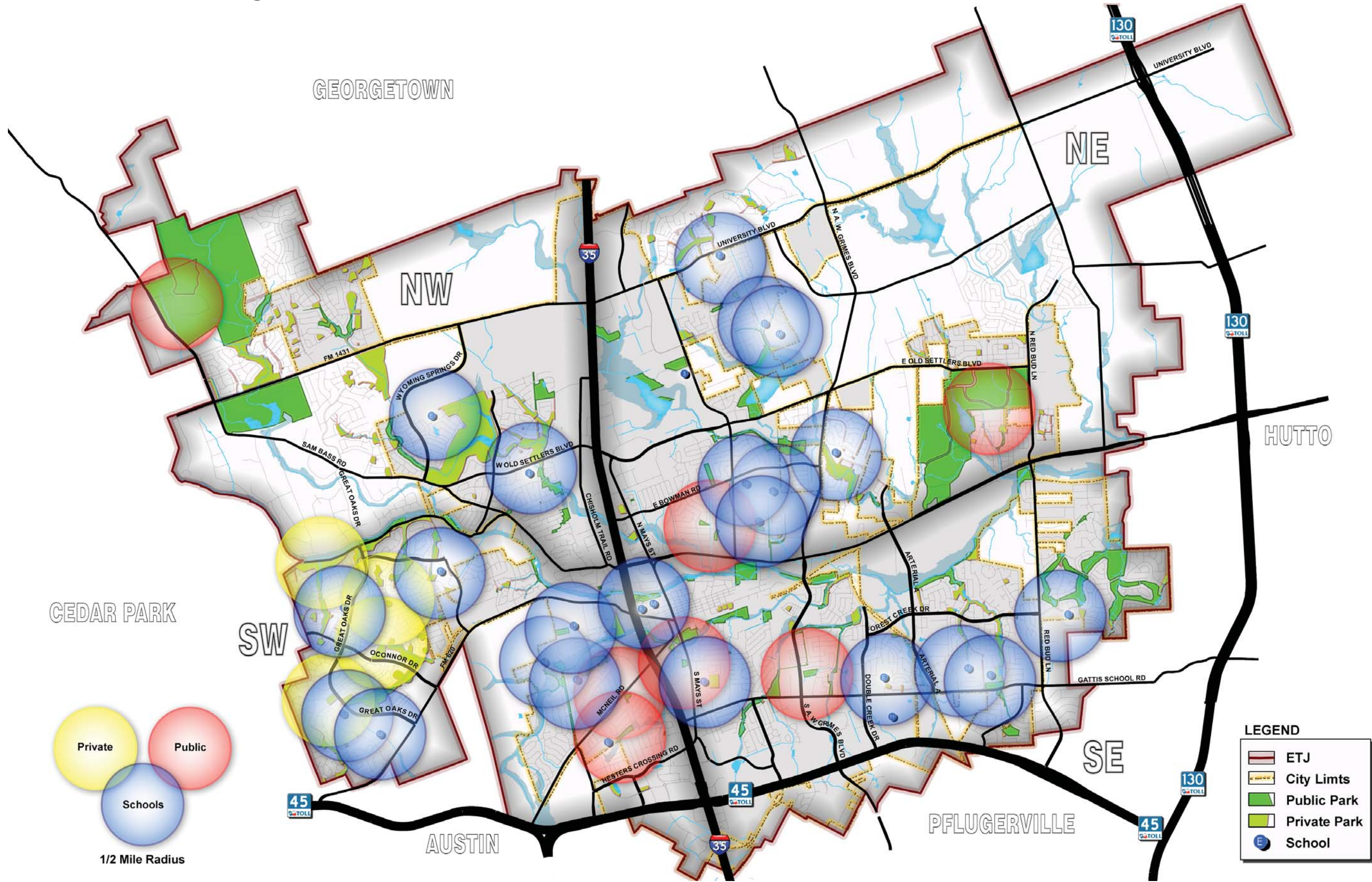
- Current 2008 Need for 94,026 pop. - 24 fields
- Year 2010 Need for 100,815 pop. – 25 fields
- Year 2020 Need for 133,264 pop. – 33 fields

Key Issues – practice facilities should be distributed in every part of the city. Locations adjacent to playing fields can be used if available. Many practice fields are currently located on school property; however the public has restricted access to them. The practice fields on school property can only be used after 8:00 pm and the fields do not have lights so there is not a sufficient amount of time for practice. The City of Round Rock should work towards strengthening its relationship with Round Rock ISD to allow leagues and residents to use the practice fields on school property at more reasonable hours when school is not in session and well before the daylight hours are over.

Level of Need – Very High as population grows. High level of need for building a stronger relationship with Round Rock ISD so that school area practice fields can be adequately used by residents and leagues.



Typical practice field in Round Rock. In adequate condition, needs lighting.



Practice Field Facility Needs

Playscapes

Current Number of Playscapes: 87 playscapes (26 are city-owned)
Current Level of Service: 1 playscape for every 1,080 residents (for city-owned only: 1 playscape for every 3,615 residents)

Target Level of Service: 1 playscape per 2,000 population

- Current 2008 Need for 94,026 pop. - 47 playscapes
- Year 2010 Need for 100,815 pop. - 50 playscapes
- Year 2020 Need for 133,264 pop. - 67 playscapes

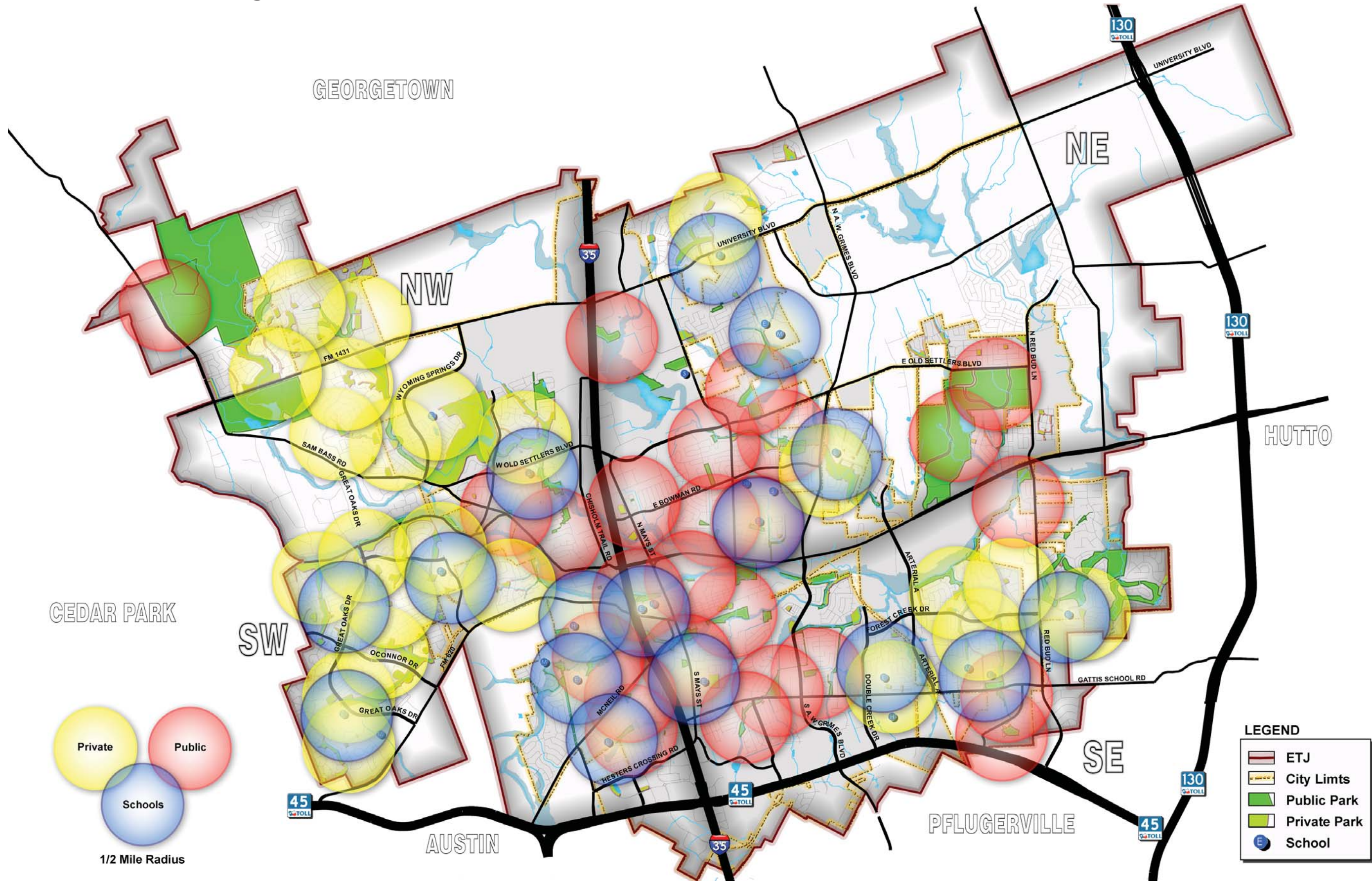
Key Issues – While not all play facilities may achieve optimum usage, availability in close proximity to neighborhoods is important. Newer, more challenging play units should be introduced in community parks, including facilities for older children. There are currently plans for installing an adaptive playscape next to the Rabb House with the help of community fundraisers.

Many playscapes are old and in need of repair. The Parks and Recreation Department for the City of Round Rock has compiled an analysis of all features in the city owned parks including the playscapes. Update and renovation of the playscape equipment as needed is a high priority to ensure the safety of Round Rock's residents.

Level of Need – High need for renovation and installing shade structures for the playscapes and the introduction of new technology play units.



Playscape in Old Settlers Park. This playscape is in excellent condition however many playscapes in Round Rock need repair.



Playground Facility Needs

Picnicking Facilities

Current Number of Facilities: tables in most parks, both private and city-owned.

Current Level of Service: Not Applicable

Target Level of Service: no specific standard; plan for picnic facilities with shade and outdoor grills in every park.

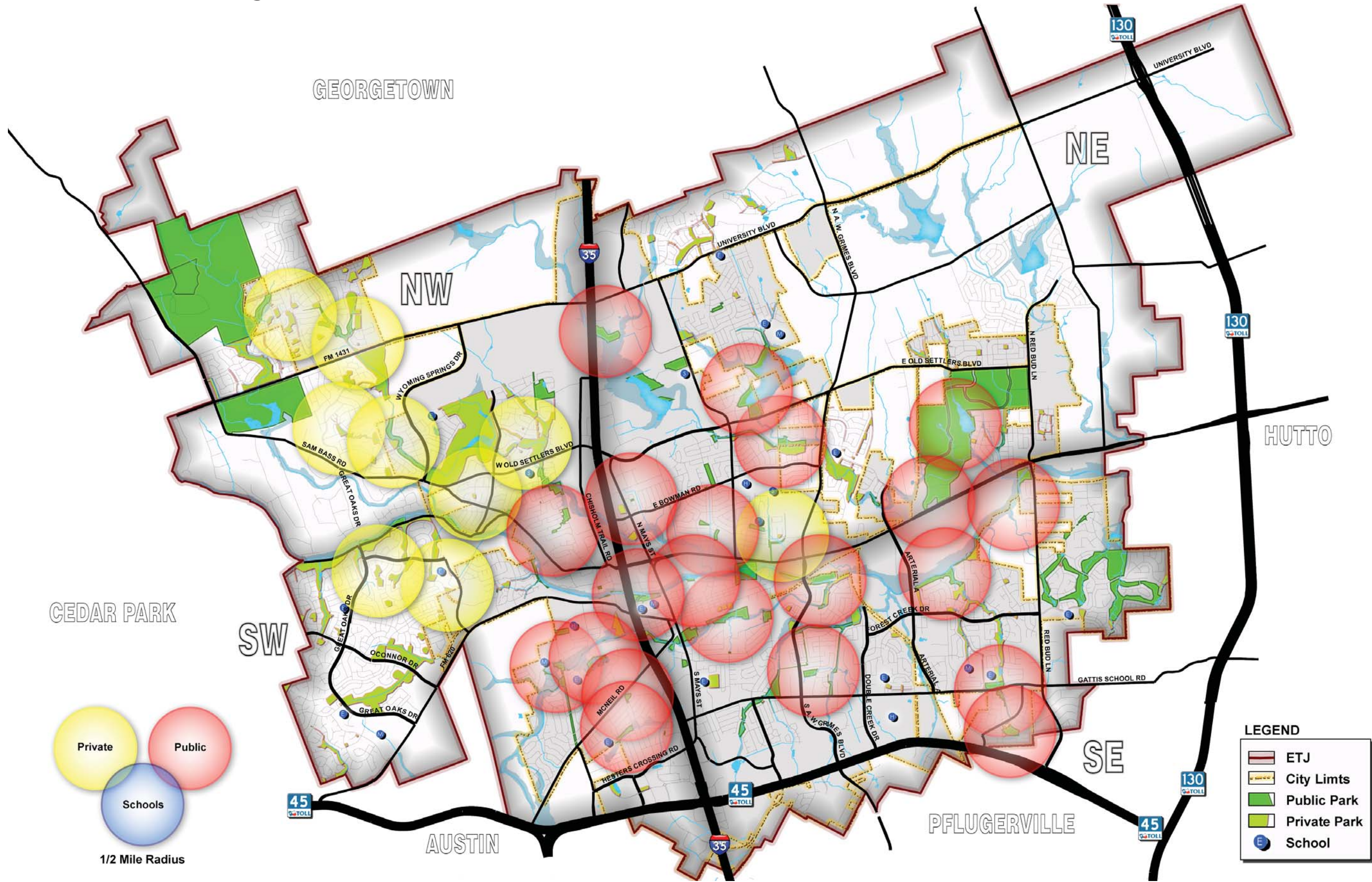
Key Issues – Many picnic facilities are aging and need updating. New clusters of picnic tables should be installed throughout the city. Many areas lack grills.

Level of Need – High throughout the scenic areas. Focus on parks with water and / or significant scenic qualities.



Picnic facilities in Memorial Park.

The Round Rock Strategic Parks and Recreation Master Plan



Picnicking Facility Needs

Large Event Pavilions (at least 14'x14')

Current Number of Pavilions: 33 pavilions (15 are in city-owned parks)

Current Level of Service: 1 pavilion for every 2,850 residents (for city-owned pavilions only: 1 pavilion for every 6,270 residents)

Target Level of Service: 1 pavilion per 3,000 population

- Current 2008 Need for 94,026 pop. - 31 pavilions
- Year 2010 Need for 100,815 pop. - 34 pavilions
- Year 2020 Need for 133,264 pop. - 44 pavilions

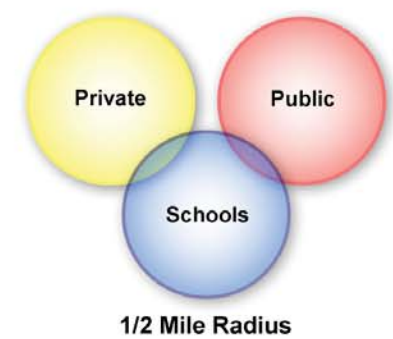
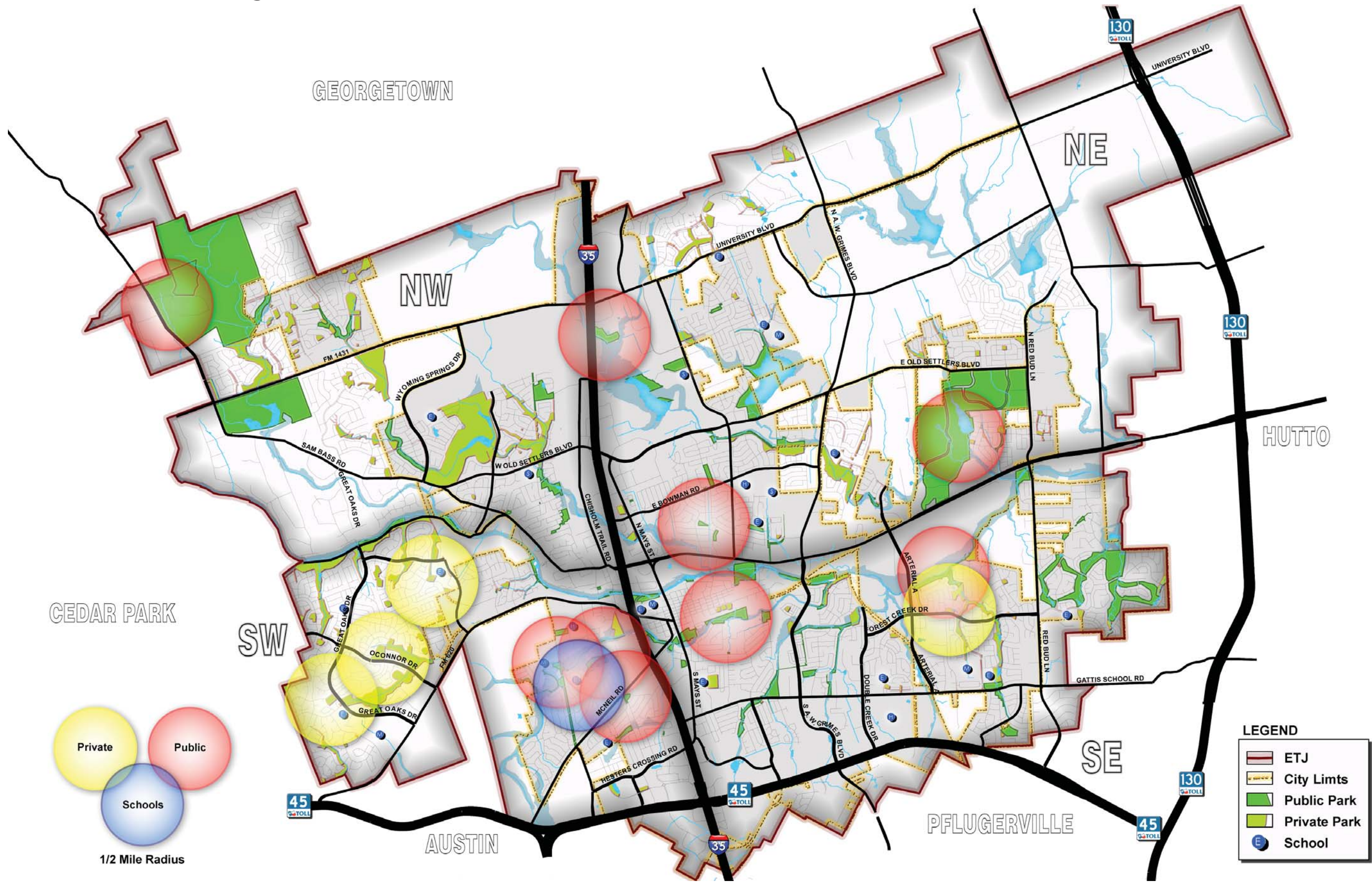
Key Issues – Shade structures should be strategically placed as prominent features in parks. A significant number of the existing pavilions are older and in need of updating or replacement. The standard for all new pavilions in Round Rock includes stone columns and a metal roof. The pavilion in Old Settlers Park needs to be renovated to match the new standard.

Level of Need – High, significant demand for shaded locations in parks.



Large pavilion in Old Settlers Park. Currently in adequate condition but will need renovation to become a signature amenity in the park.

The Round Rock Strategic Parks and Recreation Master Plan



LEGEND

	ETJ
	City Limits
	Public Park
	Private Park
	School

Large Event Pavilion Facility Needs

Rental Facilities

Current Number of Facilities: Three facilities are available for rent from the Round Rock Parks and Recreation Department. These include Kinningham, Rabb House, and the Allen R. Baca Center.

Target Level of Service: No specific standard

- Current 2008 Need for 94,026 pop. – no specific standard
- Year 2010 Need for 100,815 pop. – no specific standard
- Year 2020 Need for 133,264 pop. – no specific standard

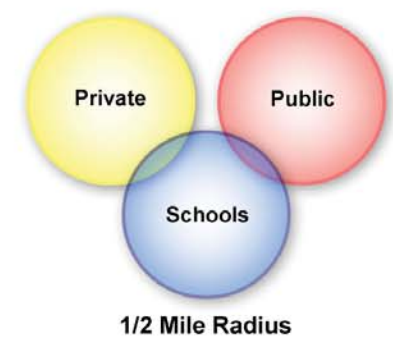
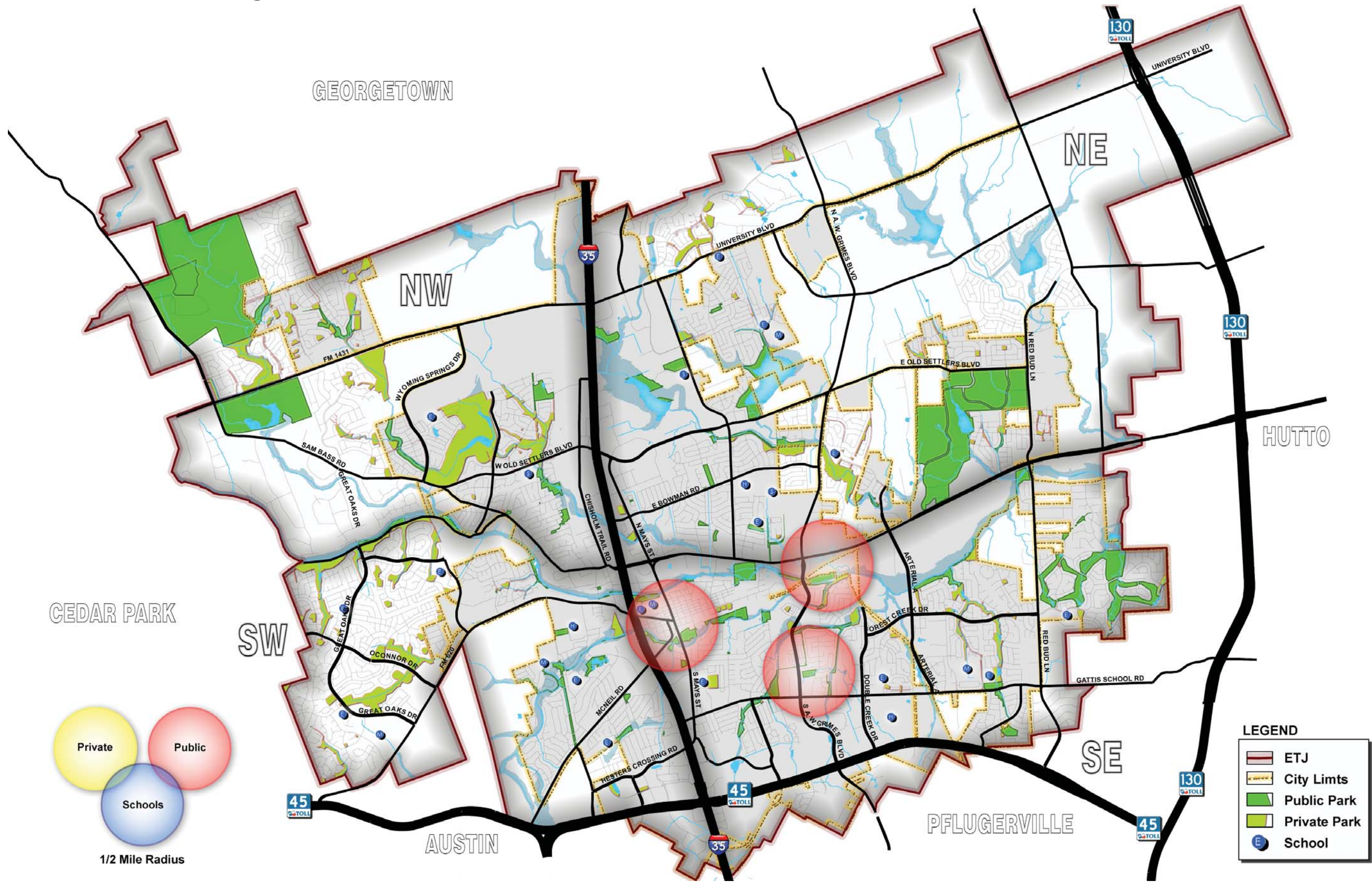
Key Issues – marketing of these facilities could be improved. Many residents in Round Rock and surrounding communities do not know the facilities are available to them. The current facilities of Kinningham and the Rabb House are in need of structural repairs and improvements.

Level of Need – the need to renovate existing facilities is very high. Major renovation of existing rental facilities is critical so that they continue to provide adequate spaces. The need for additional rental facilities is low.



Rabb House, in need of significant renovation.

The Round Rock Strategic Parks and Recreation Master Plan



LEGEND

	ETJ
	City Limits
	Public Park
	Private Park
	School

Rental Facility Needs

Event Facilities (Outdoor amphitheater, festival gardens)

Current Number of Facilities: Festival grounds in Old Settlers Park and a stage at the Baca Center. The festival grounds in Old Settlers Park holds events such as Frontier Days and can accommodate well over 1,000 patrons. The amphitheater at the Baca Center is only large enough for a few hundred people (less than 500). Round Rock lacks a large sized amphitheater for staged performances that can accommodate over 1,000 people.

Standard: mix of large and small venues (at least one of each)

- Current 2008 Need for 94,026 pop. - 2 facilities
- Year 2010 Need for 100,815 pop. - 2 facilities
- Year 2020 Need for 133,264 pop. - 2 facilities

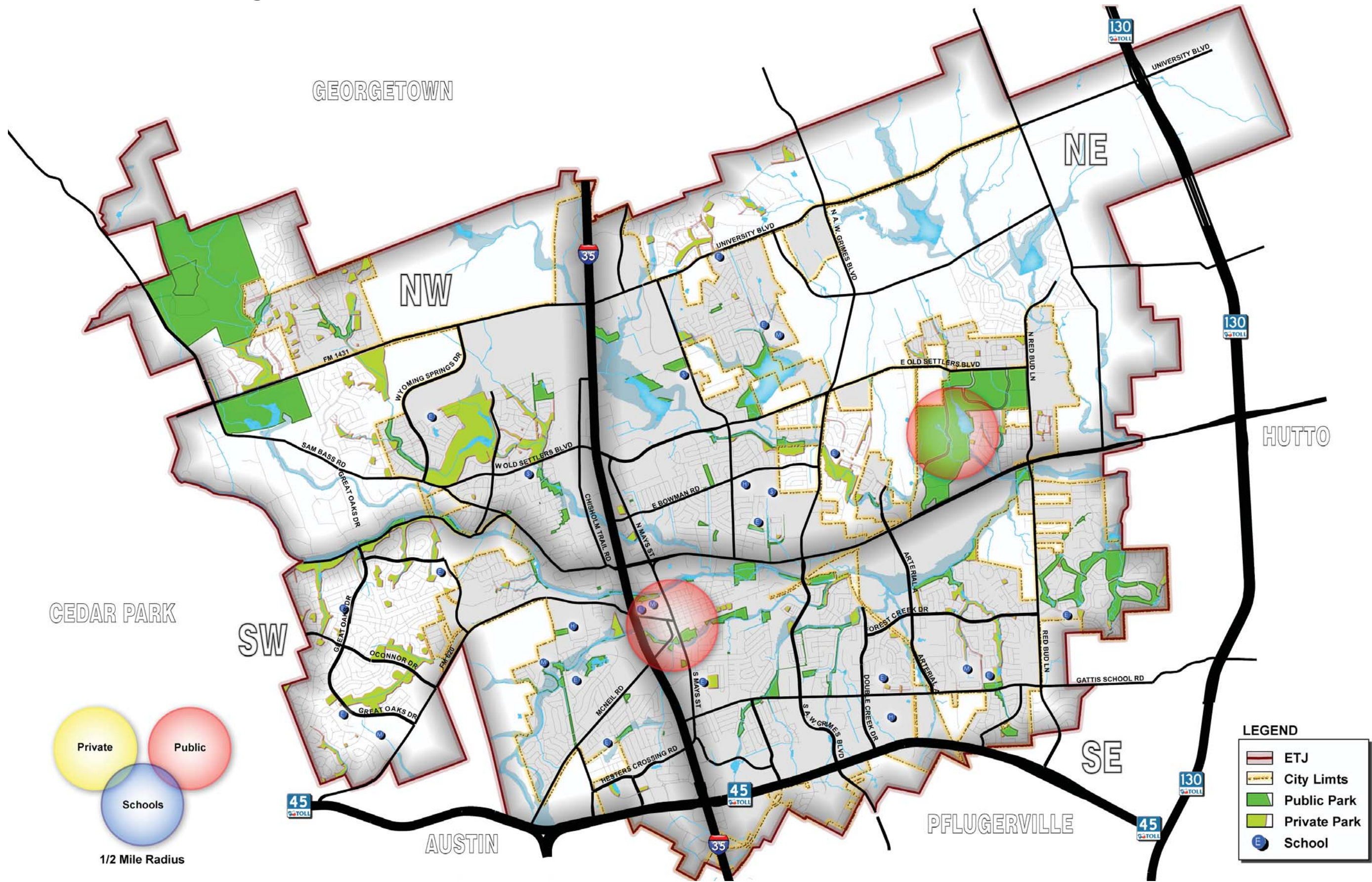
Key Issues – Round Rock lacks an attractive venue for staged outdoor events. This facility should accommodate a range of spectators (between 500 and 5,000) and should be able to handle music, theatrical, and civic events. Round Rock also lacks an events area in Downtown which could be used for markets, festivals or special events.

Level of Need – High for both a large performance area and a Downtown festival area.



Festival grounds in Old Settlers Park, are not adequate to serve all festivals and performance events in Round Rock.

The Round Rock Strategic Parks and Recreation Master Plan



Event Facility Needs