

Park Support Facilities (for community sized parks or larger, not intended for neighborhood parks.)

These types of facilities should be located in most large parks: parking, restrooms, concrete sidewalks.

Current Level of Service: No specific standard

Target Level of Service: No standard, but varies per park

- Current 2008 Need for 94,026 pop. – Varies per park
- Year 2010 Need for 100,815 pop. – Varies per park
- Year 2020 Need for 133,264 pop. – Varies per park

Key Issues – Each park site should have adequate support infrastructure.

Level of Need – High level of need for both existing and new parks. In particular, restroom renovations and inclusion in larger new parks are very highly needed.



Restrooms in Old Settlers Park, in good condition.







## Trails

Current Miles of Trails: 27.67 miles (an additional 11.62 miles of jogging/walking paths are located within the parks in Round Rock)

Current Level of Service: 1 mile for every 3,400 residents

Target Level of Service: 1 mile per 2,500 residents

- Current 2008 Need for 94,026 pop. – 38 miles
- Year 2010 Need for 100,815 pop. – 40 miles
- Year 2020 Need for 133,264 pop. – 53 miles

**Key Issues** – Trails have continually been one of the most supported facilities among citizens in Round Rock. Creating a citywide system of trails is one of the top priorities over the next ten years. Focus should be on trails along linear parks that link areas of the city. Also add walking facilities in all larger parks. Trails should be available in all parts of the city.

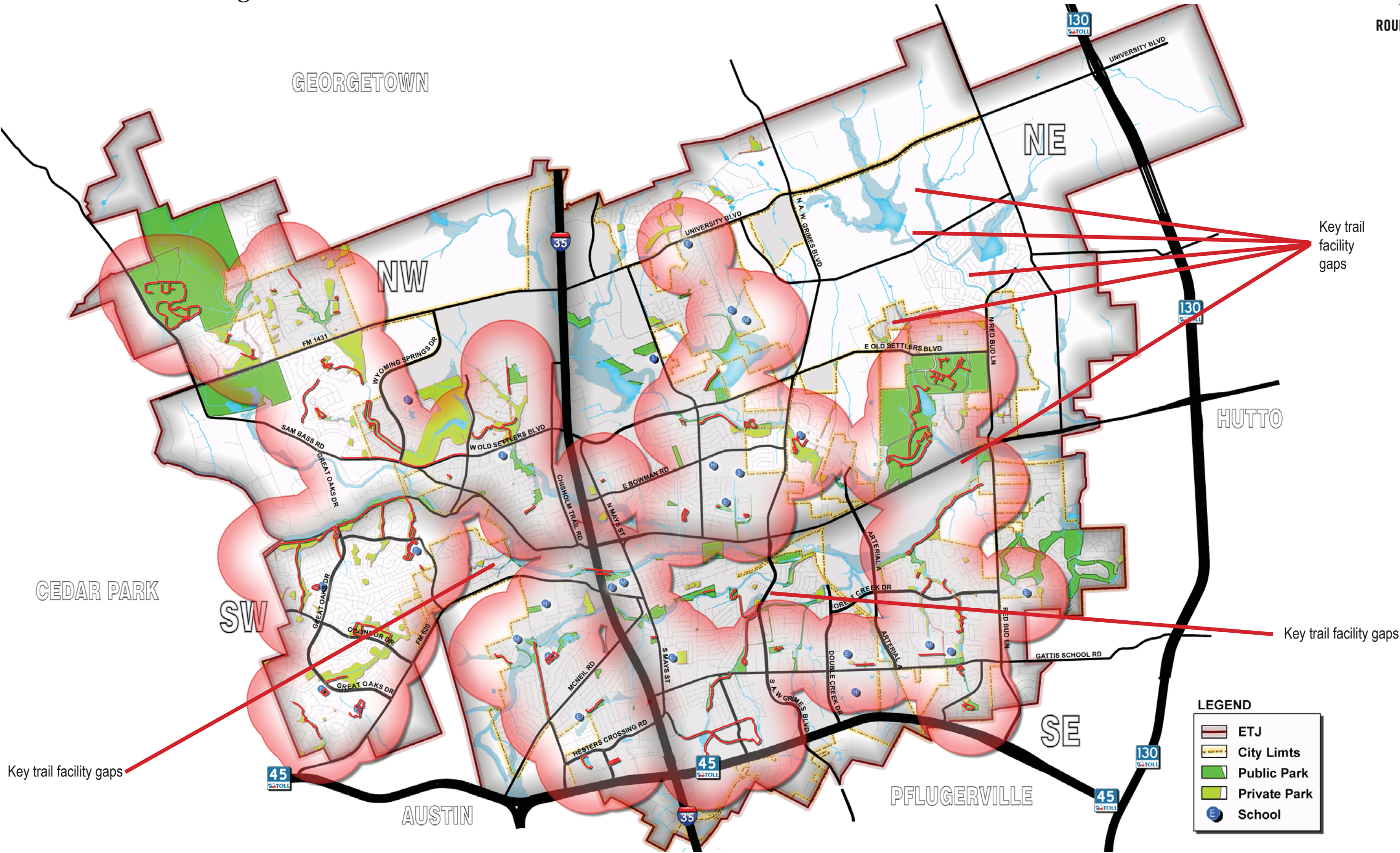
**Level of Need – Very High** - Trail development along linear greenbelts should be one of the major priorities of the next 10 years. Significant trail needs exist in the central core area of the city, as well as in the north area of the city just south of the university. High priority trails should connect parks and neighborhoods to downtown. Other important trails should link to the future Special Events Center that is being planned in Round Rock.

**Long term** - trails should be an integral part of greenbelt development in northeast Round Rock.



Trail leading to the Clay Madsen Recreation Center. Most trails in Round Rock are in good condition. Additional miles of trails was the number one most requested amenity during the public input process.







## Swimming Pools

Current Number of Pools: 32 swimming pools (most are HOA or MUD neighborhood pools. 5 are city-owned pools.)

- City-owned pools include: Rock 'N River, Lake Creek Pool, Micki Krebsbach Pool, Rabb House Pool, and the indoor pool at Clay Madsen.

Current Level of Service - 1 swimming pool for every 2,940 residents.

Target Level of Service: 3 to 5 square yards for 1.5% of the population, along with amenity features.

- Current 2008 Need for 94,026 pop. – 4,230 square yards
- Year 2010 Need for 100,815 pop. – 4,535 square yards
- Year 2020 Need for 133,264 pop. – 6,000 square yards

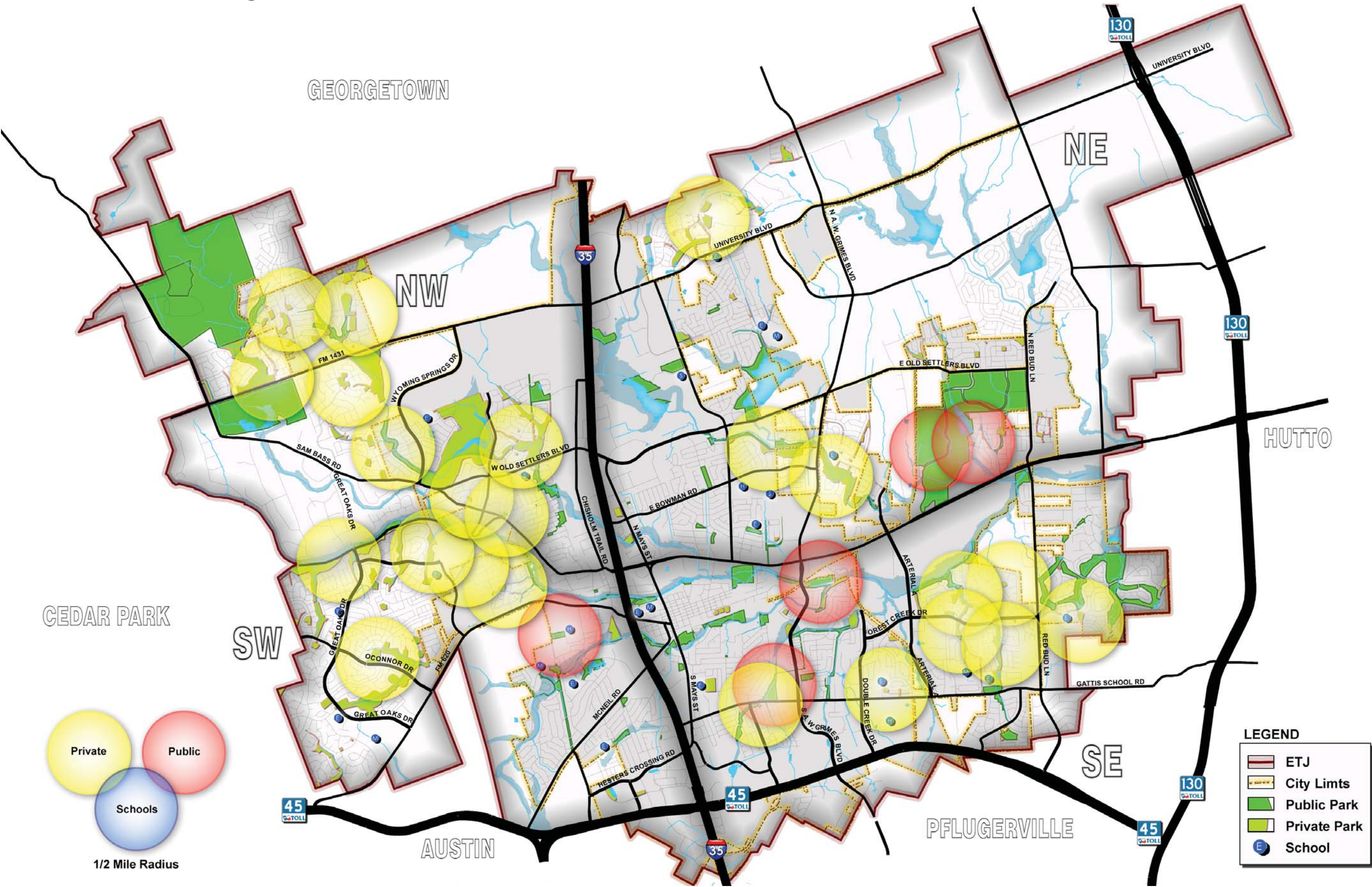
Key Issues – Lake Creek Pool lacks the amenities found in most modern pools to continue attracting visitors; however there are plans to renovate this pool and possibly include sprayground features. Rabb House Pool is not open to the public. There is not a city-owned pool in the northwest sector.

Level of Need – High for expansion of the Rock 'N River Aquatic Complex.



Rock 'N River Aquatic Center. In good condition with three additional phases planned.





Swimming Pool Facility Needs



## Spray Grounds (water play areas)

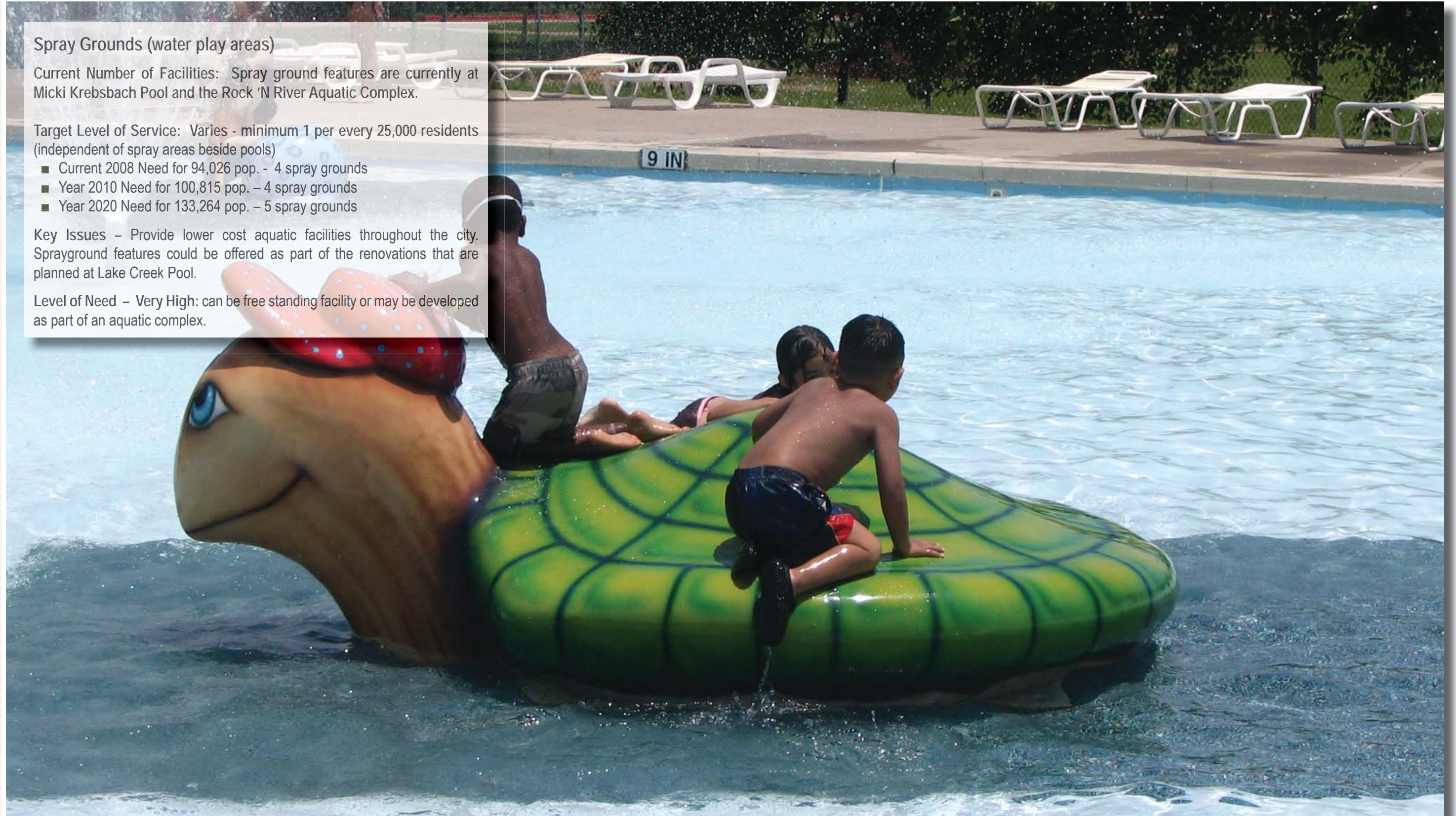
Current Number of Facilities: Spray ground features are currently at Micki Krebsbach Pool and the Rock 'N River Aquatic Complex.

Target Level of Service: Varies - minimum 1 per every 25,000 residents (independent of spray areas beside pools)

- Current 2008 Need for 94,026 pop. - 4 spray grounds
- Year 2010 Need for 100,815 pop. - 4 spray grounds
- Year 2020 Need for 133,264 pop. - 5 spray grounds

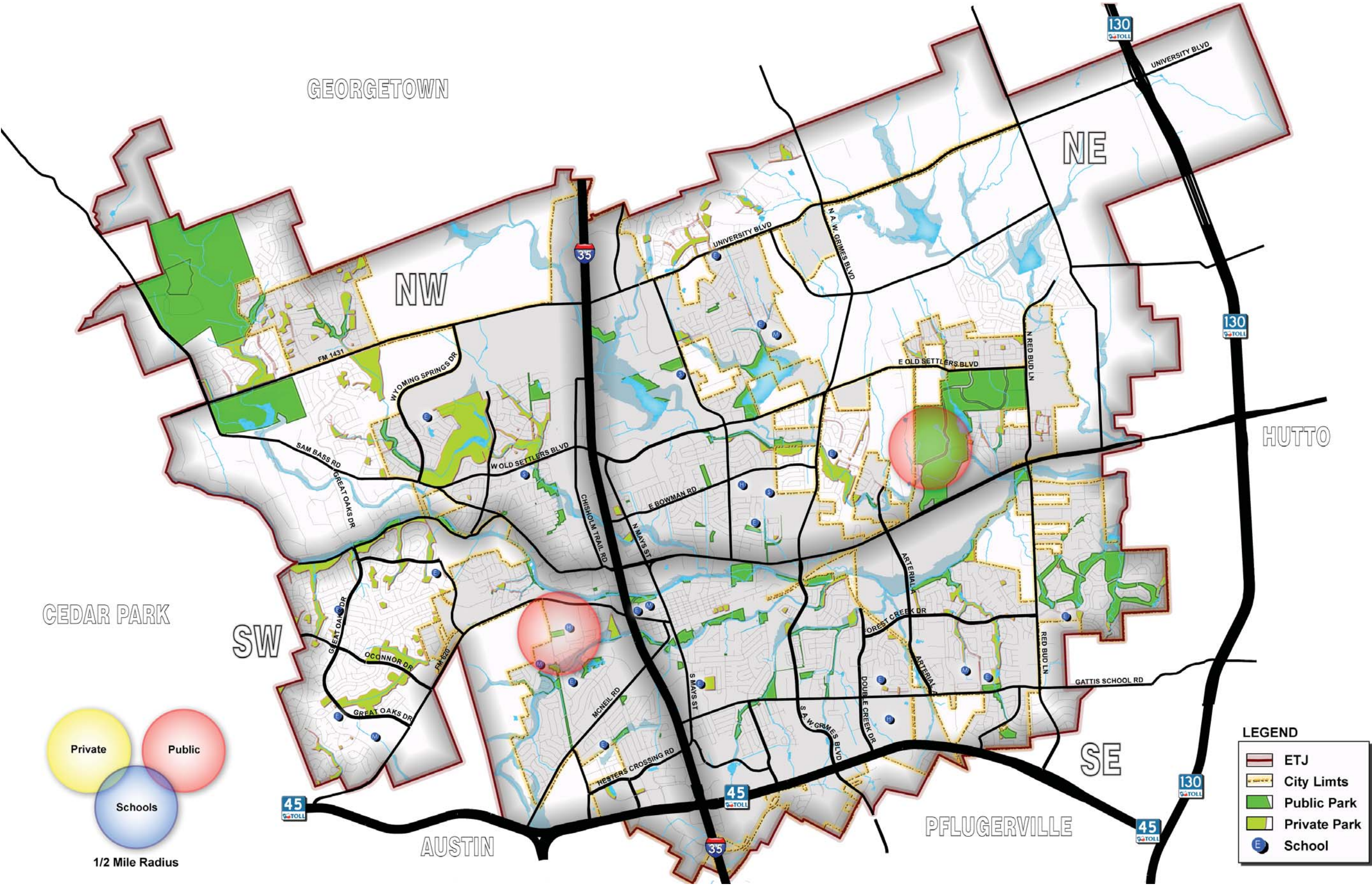
Key Issues - Provide lower cost aquatic facilities throughout the city. Sprayground features could be offered as part of the renovations that are planned at Lake Creek Pool.

Level of Need - Very High: can be free standing facility or may be developed as part of an aquatic complex.



Micki Krebsbach Pool, in adequate condition.







## Indoor Gymnasiums

**Current Number of Facilities:** There are a total of 30 indoor gymnasiums in Round Rock. Two are private facilities located at the YMCA and 24 Hour Fitness which are not available to the public without a membership. 26 gymnasiums are located on Round Rock ISD school property. There are only 2 gymnasiums available for public and league use located at the Clay Madsen Recreation Center.

**Current Level of Service of the 2 gyms available for public and league use:** 1 gymnasium for every 47,000 residents.

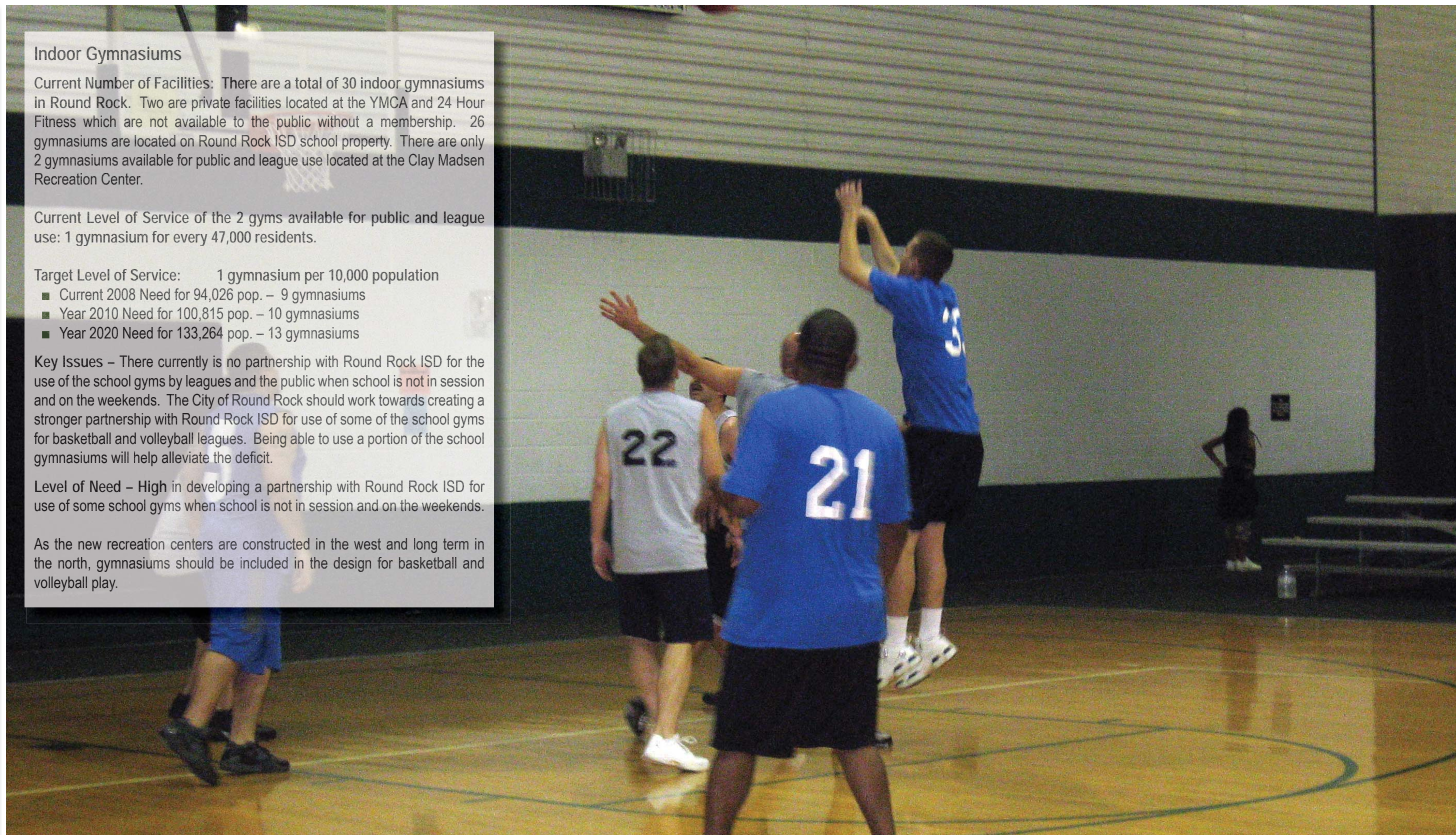
**Target Level of Service:** 1 gymnasium per 10,000 population

- Current 2008 Need for 94,026 pop. – 9 gymnasiums
- Year 2010 Need for 100,815 pop. – 10 gymnasiums
- Year 2020 Need for 133,264 pop. – 13 gymnasiums

**Key Issues –** There currently is no partnership with Round Rock ISD for the use of the school gyms by leagues and the public when school is not in session and on the weekends. The City of Round Rock should work towards creating a stronger partnership with Round Rock ISD for use of some of the school gyms for basketball and volleyball leagues. Being able to use a portion of the school gymnasiums will help alleviate the deficit.

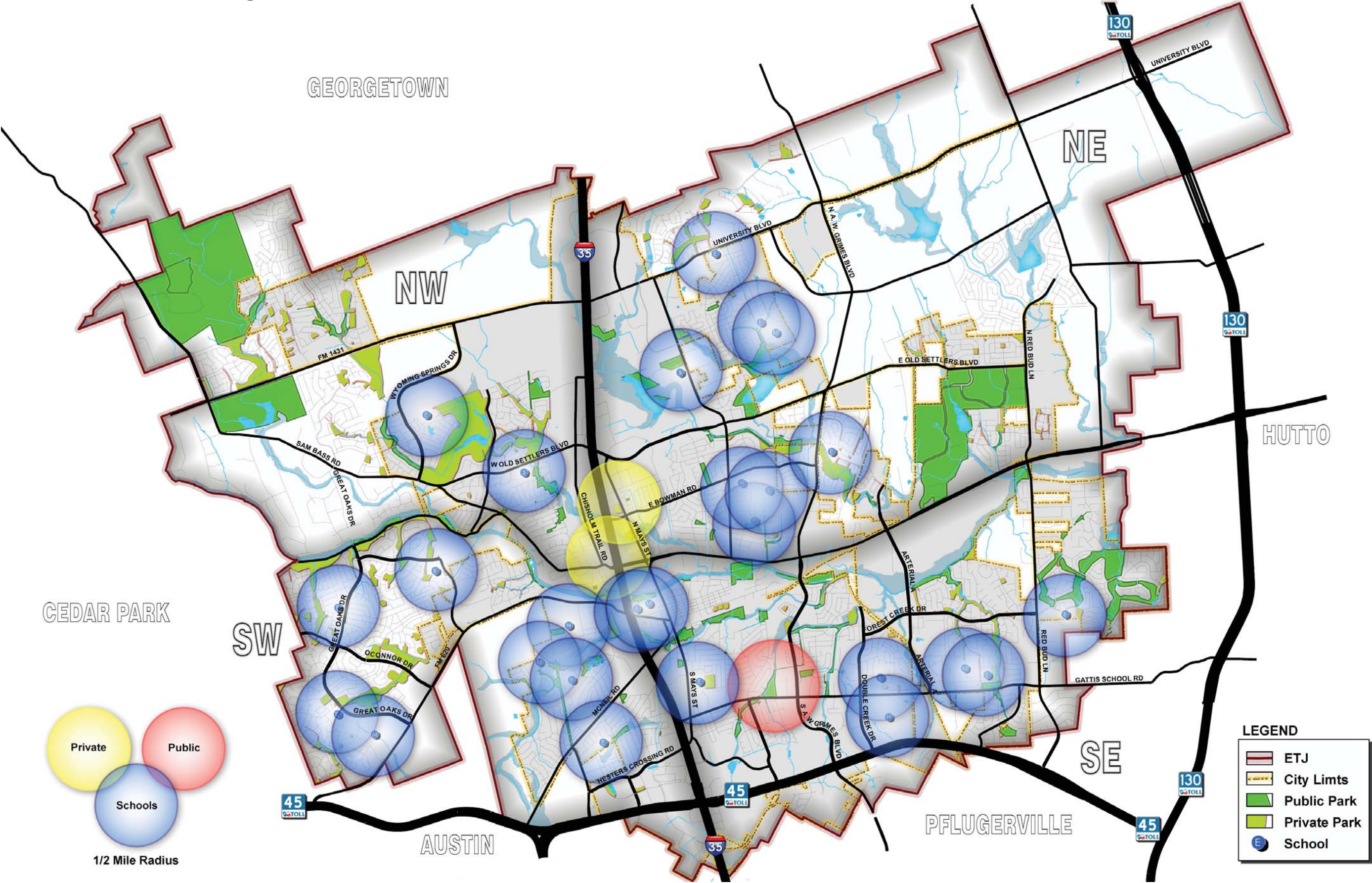
**Level of Need –** High in developing a partnership with Round Rock ISD for use of some school gyms when school is not in session and on the weekends.

As the new recreation centers are constructed in the west and long term in the north, gymnasiums should be included in the design for basketball and volleyball play.



Clay Madsen Recreation Center indoor gym, in excellent condition.





Indoor Gymnasium Facility Needs