

GPS POINT DATA SHEET CITY OF ROUND ROCK, TEXAS

STATION NAME: ROUND ROCK 01-028
 STAMP ON MARK: 01-028
 MAPSCO: 377 A RR GRID:

NAD 83/HARN 93 HORIZONTAL COORDINATES

NORTHING(FT)	EASTING(FT)	LATITUDE	LONGITUDE
10171393.2233	3136255.3192	30°32'35.822090"N	97°39'56.417428"W

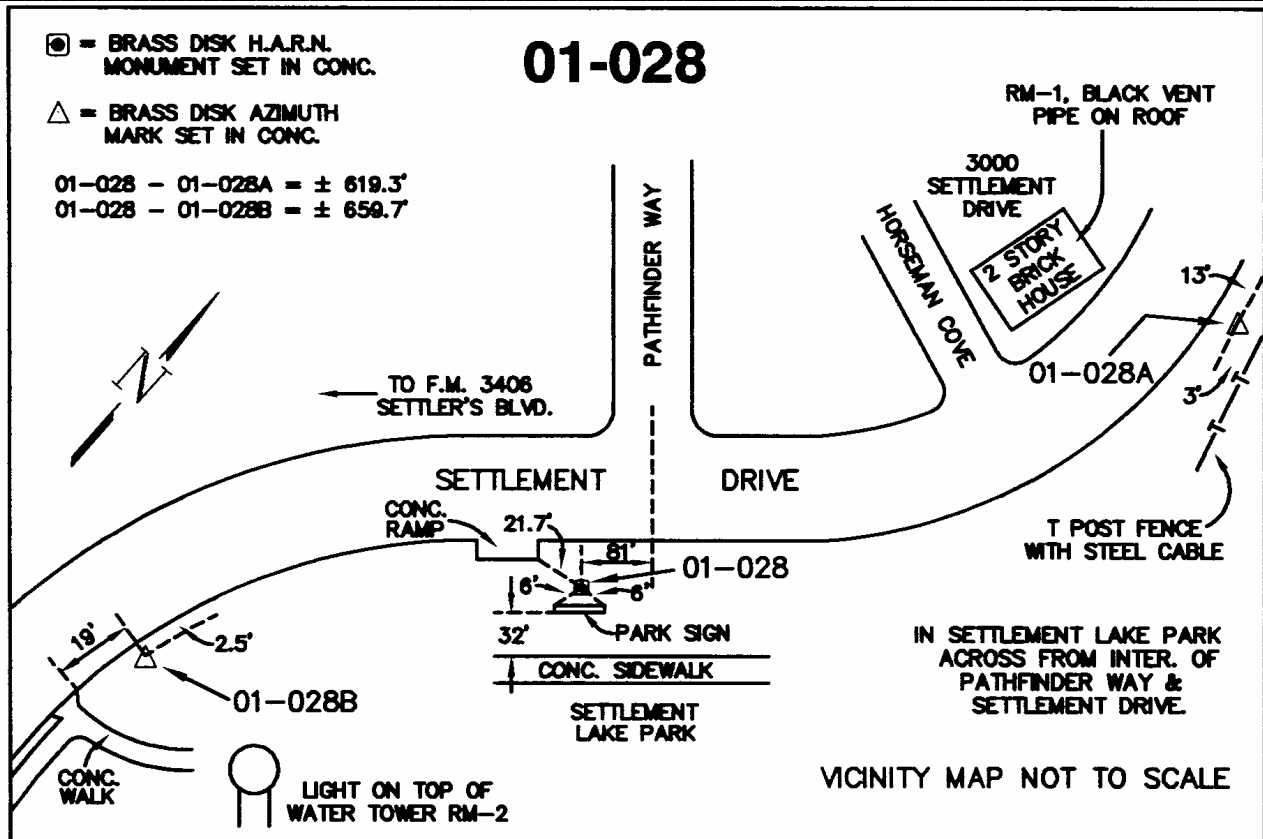
Convergence	Grid Scale Factor	Elev. Scale Factor	Combined Scale Factor
1°22'26.410505"E	0.99991350	0.99996936	0.99988286

NAVD 88 ELEVATION DATA:(GEOID99)

ORTHOMETRIC ELEV(FT):	ELLIPSOIDAL ELEV(M):	ELLIP. HGT(M)
724.8791	195.0926	-25.8510

AZIMUTH MARKS:

ID	Grid Azimuth	Grid Distance	Northing	Easting	Orth. Elev.
01-028A	39°53'25"	619.25'	10171868.36	3136652.46	725.8
01-028B	209°08'44"	659.67'	10170817.08	3135934.04	735.0
RM-1	219°21'17"	-----			
RM-2	344°38'01"	-----			











CITY OF ROCK

ROCK

GPS
AZIMUTH MARK 01-028 B
SURVEY MARKER





