

GPS POINT DATA SHEET CITY OF ROUND ROCK, TEXAS

STATION NAME: ROUND ROCK 01-037
 STAMP ON MARK: 01-037
 MAPSCO: N ON CR 110 FROM 348 B RR GRID:

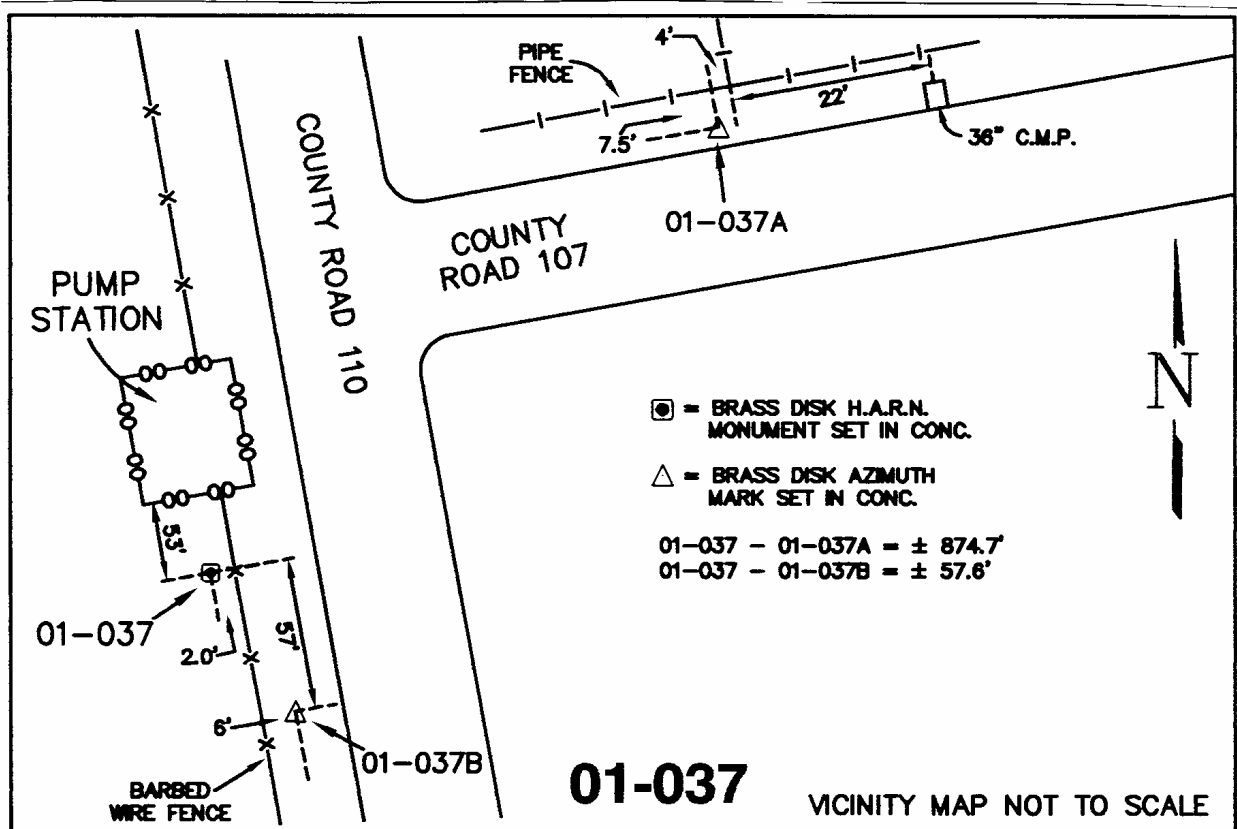
NAD 83/HARN 93 HORIZONTAL COORDINATES			
NORTHING(FT)	EASTING(FT)	LATITUDE	LONGITUDE
10188005.9814	3151363.4109	30°35'16.598126"N	97°36'59.049962"W
Convergence	Grid Scale Factor	Elev. Scale Factor	Combined Scale Factor
1°23'57.765194 E	0.99990761	0.99996539	0.99987300

NAVD 88 ELEVATION DATA:(GEOID99)

ORTHOMETRIC ELEV(FT):	ELLIPSOIDAL ELEV(M):	ELLIP. HGT(M)
808.2995	220.4172	-25.9530

AZIMUTH MARKS:

ID	Grid Azimuth	Grid Distance	Northing	Easting	Orth. Elev.
01-037A	55°22'15"	874.44'	10188502.89	3152082.94	817.9
01-037B	151°30'07"	57.65'	10187955.32	3151390.92	807.8



CR 107







