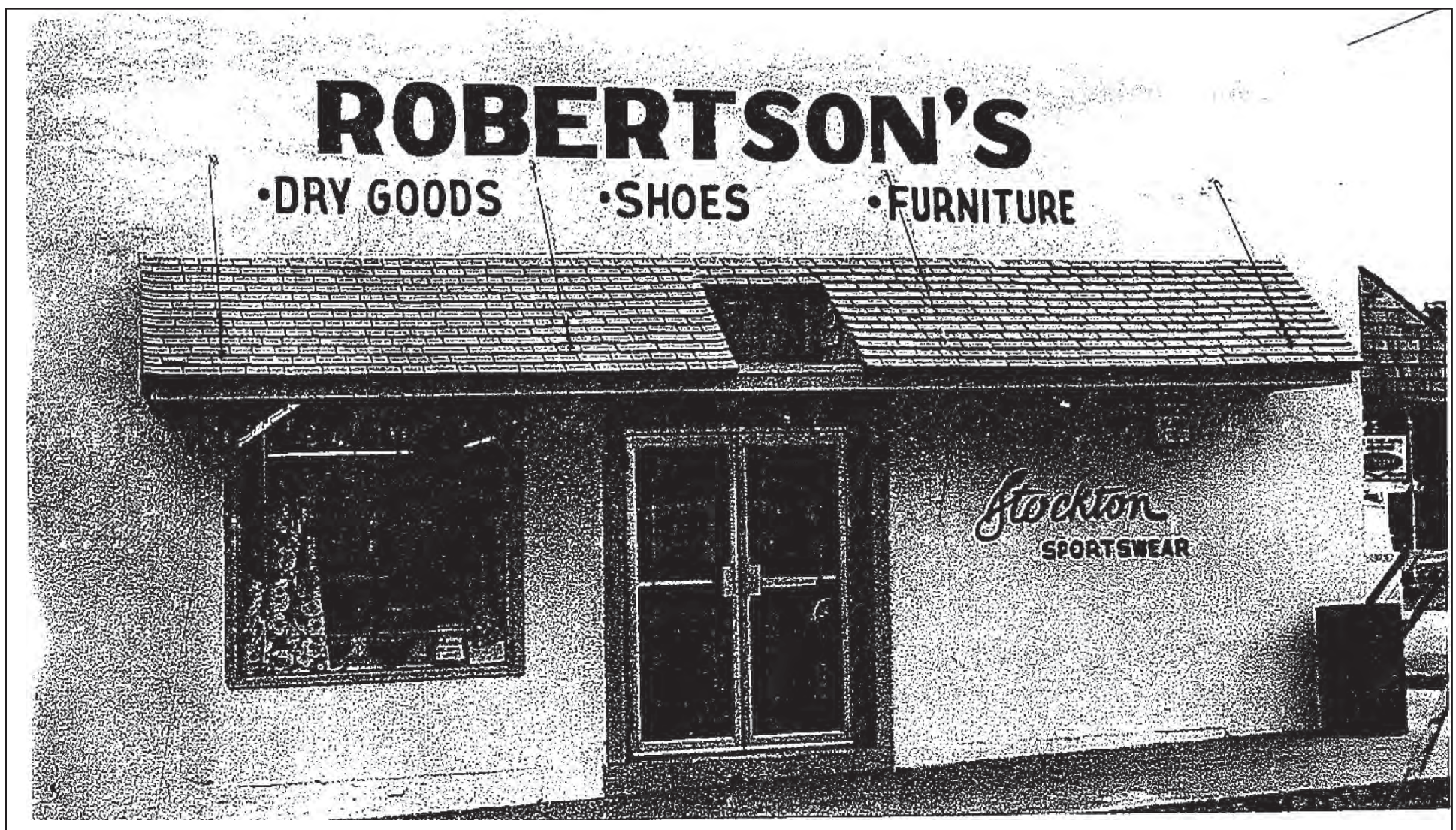


Historic Round Rock

101 East Main

“Koppel Store”

Built 1876



Henry Koppel built and opened this store soon after the lot was laid out in 1876. The family grocery store passed to his brother Sam in 1884 and remained in the Koppel family until 1902. Sheppard and Wright offered “staple and fancy groceries” in that year. After 1920, the store was sold to the Robertson family, who operated a clothing store until 1995. In the 1960s, it was the Robertson Fabric Shop and also the Greyhound bus station. Stucco, applied to the exterior in the 1970s, has since been removed to reveal the original limestone walls.

Sheppard & Wright,

AT KOPPLE CORNER,

With a full line of Staple and Fancy Groceries, Wood-
enware, Willow-ware, Glassware, Queensware,
Tinware and Silverware.

GARDEN SEED A SPECIALTY.

A FULL LINE OF FEED STUFFS.

Come to see us, we will treat you right.