

4 MESH 0.05" STAINLESS STEEL WIRE SCREEN
INSTALLED BETWEEN 90° BEND AND FLANGED
SPECIAL. ALL FLANGED FITTINGS TO BE 125-LB.

FLANGED SCH. 40 STEEL PIPE. ALL
FLANGED FITTINGS TO BE 125-LB.

TRAFFIC RATED PRECAST REMOVABLE TOP SLAB
REINFORCED AS PER A.S.T.M. C478. PROVIDE WITH
THREE LIFTING EYE HOOKS EMBEDDED WITHIN

MANHOLE FRAME AND SOLID COVER (SEE NOTE #4),
OFFSET MANHOLE FRAME IN TOP SLAB TO PROVIDE
ACCESS TO STEPS. CENTER FRAME OVER STEPS
1'-0" FROM EDGE OF SLAB

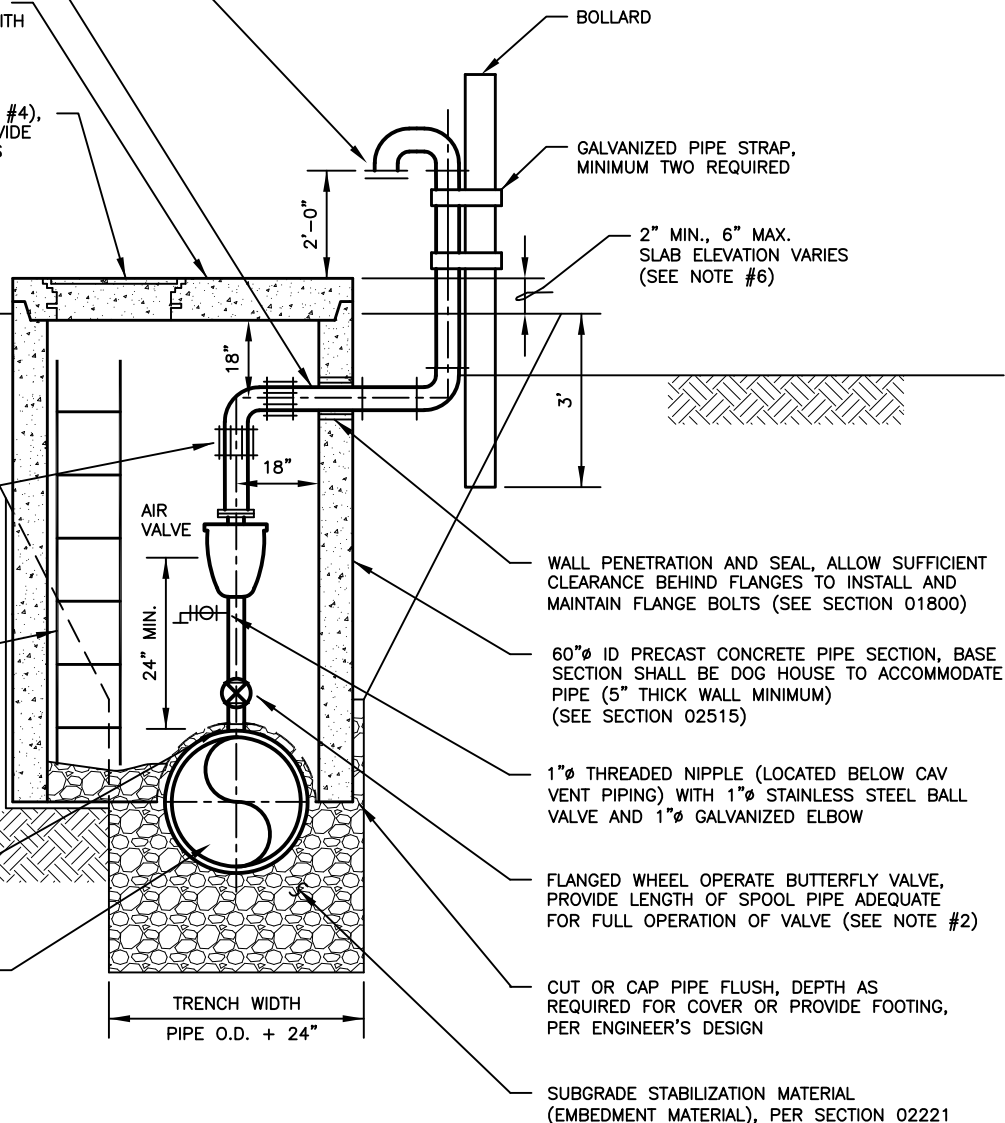
GROUND LINE
ELEVATION VARIES

INSTALL FLANGE
COUPLING ADAPTER,
SEE SECTION 15060

PROVIDE AND INSTALL ALUMINUM
OR FIBERGLASS MANHOLE LADDER,
AS PER DETAIL WT-18

ENGINEER SHALL SPECIFY OUTLET
TYPE (WELDED OR TREADED)
BASED ON PIPE MATERIAL

PIPE LINE



BOLLARD

GALVANIZED PIPE STRAP,
MINIMUM TWO REQUIRED

2" MIN., 6" MAX.
SLAB ELEVATION VARIES
(SEE NOTE #6)

WALL PENETRATION AND SEAL, ALLOW SUFFICIENT
CLEARANCE BEHIND FLANGES TO INSTALL AND
MAINTAIN FLANGE BOLTS (SEE SECTION 01800)

60"Ø ID PRECAST CONCRETE PIPE SECTION, BASE
SECTION SHALL BE DOG HOUSE TO ACCOMMODATE
PIPE (5" THICK WALL MINIMUM)
(SEE SECTION 02515)

1"Ø THREADED NIPPLE (LOCATED BELOW CAV
VENT PIPING) WITH 1"Ø STAINLESS STEEL BALL
VALVE AND 1"Ø GALVANIZED ELBOW

FLANGED WHEEL OPERATE BUTTERFLY VALVE,
PROVIDE LENGTH OF SPOOL PIPE ADEQUATE
FOR FULL OPERATION OF VALVE (SEE NOTE #2)

CUT OR CAP PIPE FLUSH, DEPTH AS
REQUIRED FOR COVER OR PROVIDE FOOTING,
PER ENGINEER'S DESIGN

SUBGRADE STABILIZATION MATERIAL
(EMBEDMENT MATERIAL), PER SECTION 02221

NOTES:

1. COAT VENT PIPE PER SECTION 09905.
2. PIPING AND APPURTENANCES SHALL MATCH THE DIAMETER OF THE AIR VALVE.
3. FILL MANHOLE WITH CRUSHED LIMESTONE, SO THAT CENTERLINE OF VALVE IS 2'-0" ABOVE TOP OF PIPE (INSIDE MANHOLE).
4. MANHOLE FRAME AND COVER, AS PER DETAIL WT-28.
5. FOR AIR AND VACUUM VALVE (CAV) LARGER THAN 4", ENGINEER SHALL MODIFY DETAIL AND DIMENSIONS TO ACCOMMODATE PROPOSED CAV & VAULT WITHIN CLEARANCES SHOWN HEREIN.
6. ENGINEER SHALL BE RESPONSIBLE FOR THE DESIGN PROFILE OF THE PIPE LINE, SUCH THAT THE CONTRACTOR CAN INSTALL "CAV" AND VAULT ON THE PIPE LINE, AS SHOWN HEREIN AND NOT EXCEED THE 6" ABOVE FINISH GRADE MAXIMUM FOR THE TOP OF THE VAULT.

RECORD SIGNED COPY
ON FILE AT U&ES DEPARTMENT
APPROVED

03-01-18

DATE

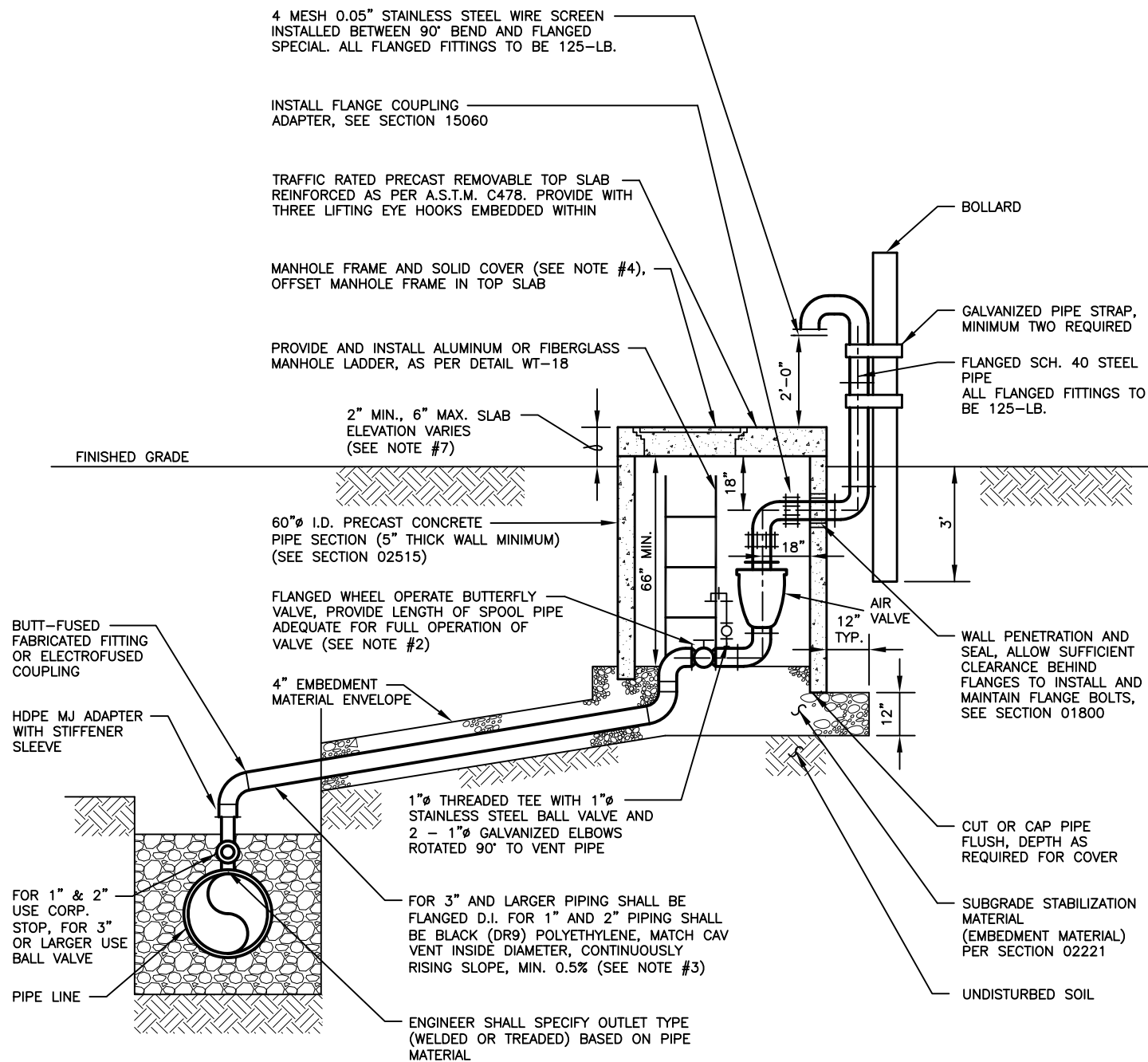
THE ARCHITECT/ENGINEER ASSUMES
RESPONSIBILITY FOR THE APPROPRIATE
USE OF THIS DETAIL. (NOT TO SCALE)

CITY OF ROUND ROCK

**2" TO 4" COMBINATION AIR AND
VACUUM RELEASE VALVE (CAV) DETAIL
TYPE 1**

DRAWING NO:
WT-21 (1 of 2)





NOTES:

1. COAT VENT PIPE PER SECTION 09905.
2. PIPING AND APPURTENANCES SHALL MATCH THE DIAMETER OF THE AIR VALVE.
3. FILL MANHOLE WITH CRUSHED LIMESTONE, SO THAT CENTERLINE OF VALVE IS 2'-0" ABOVE TOP OF PIPE (INSIDE MANHOLE).
4. MANHOLE FRAME AND COVER, AS PER DETAIL WT-28.
5. FOR AIR AND VACUUM VALVE (CAV) LARGER THAN 4", ENGINEER SHALL MODIFY DETAIL AND DIMENSIONS TO ACCOMMODATE PROPOSED CAV & VAULT WITHIN CLEARANCES SHOWN HEREIN.
6. ENGINEER SHALL BE RESPONSIBLE FOR THE DESIGN PROFILE OF THE PIPE LINE, SUCH THAT THE CONTRACTOR CAN INSTALL "CAV" AND VAULT ON THE PIPE LINE, AS SHOWN HEREIN AND NOT EXCEED THE 6" ABOVE FINISH GRADE MAXIMUM FOR THE TOP OF THE VAULT.

RECORD SIGNED COPY
ON FILE AT U&ES DEPARTMENT

APPROVED

03-01-18

DATE

THE ARCHITECT/ENGINEER ASSUMES
RESPONSIBILITY FOR THE APPROPRIATE
USE OF THIS DETAIL. (NOT TO SCALE)

CITY OF ROUND ROCK

**2" TO 4" COMBINATION AIR AND
VACUUM RELEASE VALVE (CAV) DETAIL
TYPE 2**

DRAWING NO:
WT-21 (2 of 2)