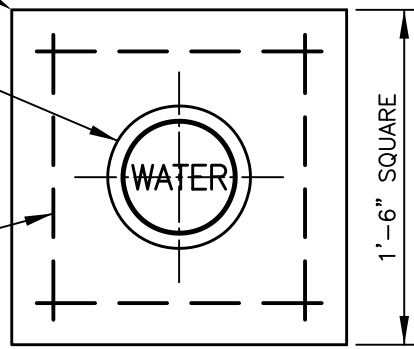


CONCRETE COLLAR

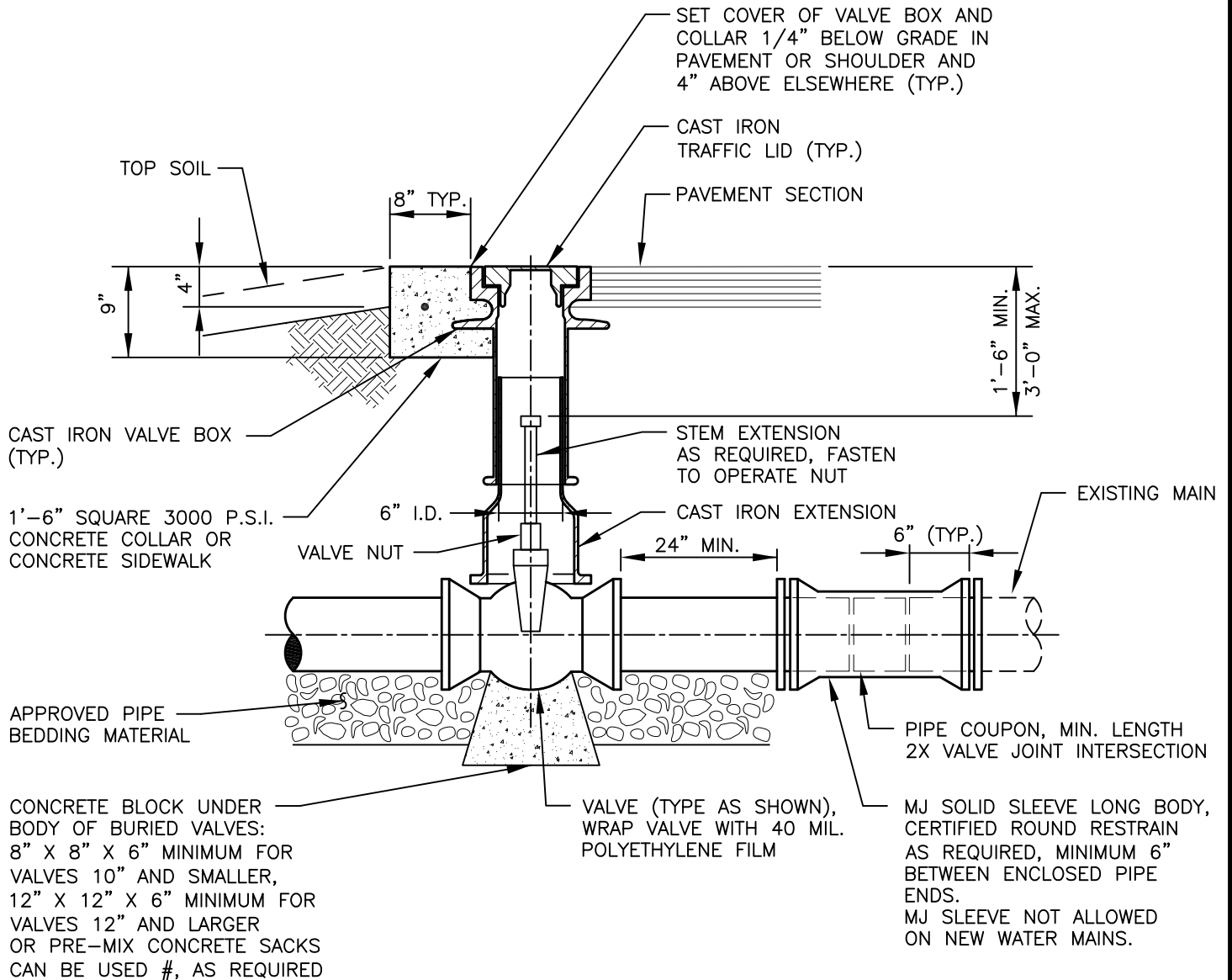
VALVE BOX AND COVER

#4 REBAR (TYP.)



PLAN VIEW

SEE DETAIL WT-06



CAST IRON VALVE BOX (TYP.)

1'-6" SQUARE 3000 P.S.I. CONCRETE COLLAR OR CONCRETE SIDEWALK

APPROVED PIPE BEDDING MATERIAL

CONCRETE BLOCK UNDER BODY OF BURIED VALVES: 8" X 8" X 6" MINIMUM FOR VALVES 10" AND SMALLER, 12" X 12" X 6" MINIMUM FOR VALVES 12" AND LARGER OR PRE-MIX CONCRETE SACKS CAN BE USED #, AS REQUIRED

SET COVER OF VALVE BOX AND COLLAR 1/4" BELOW GRADE IN PAVEMENT OR SHOULDER AND 4" ABOVE ELSEWHERE (TYP.)

CAST IRON TRAFFIC LID (TYP.)

PAVEMENT SECTION

STEM EXTENSION AS REQUIRED, FASTEN TO OPERATE NUT

CAST IRON EXTENSION

VALVE NUT

6" I.D.

24" MIN.

6" (TYP.)

EXISTING MAIN

PIPE COUPON, MIN. LENGTH 2X VALVE JOINT INTERSECTION

MJ SOLID SLEEVE LONG BODY, CERTIFIED ROUND RESTRAIN AS REQUIRED, MINIMUM 6" BETWEEN ENCLOSED PIPE ENDS. MJ SLEEVE NOT ALLOWED ON NEW WATER MAINS.

VALVE (TYPE AS SHOWN), WRAP VALVE WITH 40 MIL. POLYETHYLENE FILM

RECORD SIGNED COPY ON FILE AT U&ES DEPARTMENT

APPROVED
03-01-18
DATE

THE ARCHITECT/ENGINEER ASSUMES RESPONSIBILITY FOR THE APPROPRIATE USE OF THIS DETAIL. (NOT TO SCALE)

CITY OF ROUND ROCK

DRAWING NO:
WT-22

GATE VALVE DETAIL

