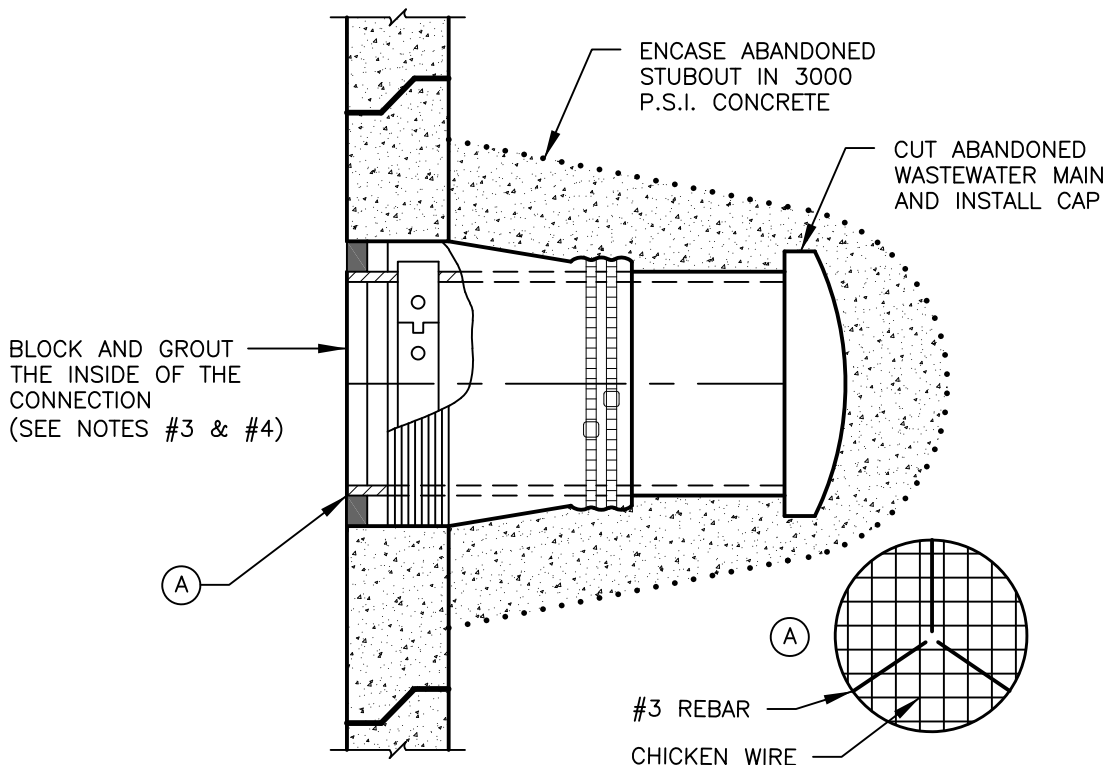


**NOTES:**

1. EXISTING MANHOLES TO BE VACUUM TESTED PRIOR TO ANY CONNECTIONS.
2. NEW CONNECTIONS TO HAVE MINIMUM VERTICAL AND HORIZONTAL SEPARATION OF 12" ON THE OUTSIDE FACE OF THE MANHOLE FROM ANY EXISTING PENETRATIONS AND/OR MANHOLE JOINTS.
3. CONNECTIONS MADE INTO EXISTING MANHOLES ARE TO BE CORED AND NOT DRILLED/CHISELED.
4. CUT, SHAPE AND SLOPE NEW INVERT CHANNEL IN THE EXISTING CONCRETE BENCH FOR SMOOTH FLOW FROM THE NEW WASTEWATER CONNECTION.
5. EXISTING MANHOLES TO BE RECOATED AFTER ANY NEW WASTEWATER CONNECTION IS ADDED.

**NEW CONNECTIONS TO EXISTING WASTEWATER MANHOLES**



**NOTES:**

1. THIS DETAIL IS INTENDED FOR WASTEWATER MANHOLES THAT WILL REMAIN IN SERVICE. FOR WASTEWATER MANHOLES THAT ARE TO BE ABANDONED, REFERENCE DETAIL WW-15.
2. WASTEWATER MANHOLE TO BE RECOATED AFTER GROUT IS INSTALLED.
3. BLOCK THE INLET OF THE MANHOLE WITH CHICKEN WIRE AND 3-#3 REBAR. GROUT THE INSIDE OF THE MANHOLE FLUSH WITH THE MANHOLE WALL.
4. CONNECTIONS 24" AND LARGER REQUIRE BRICK BLOCKING TO BE INSTALLED PRIOR TO GROUTING.

**ABANDONMENT OF CONNECTIONS TO EXISTING WASTEWATER MANHOLES**

RECORD SIGNED COPY  
ON FILE AT U&ES DEPARTMENT

APPROVED

03-01-18

DATE

THE ARCHITECT/ENGINEER ASSUMES  
RESPONSIBILITY FOR THE APPROPRIATE  
USE OF THIS DETAIL. (NOT TO SCALE)

**CITY OF ROUND ROCK**

DRAWING NO:  
WW-21

**EXISTING WASTEWATER MANHOLE  
CONNECTION DETAIL**

