

Project Overview

Purpose

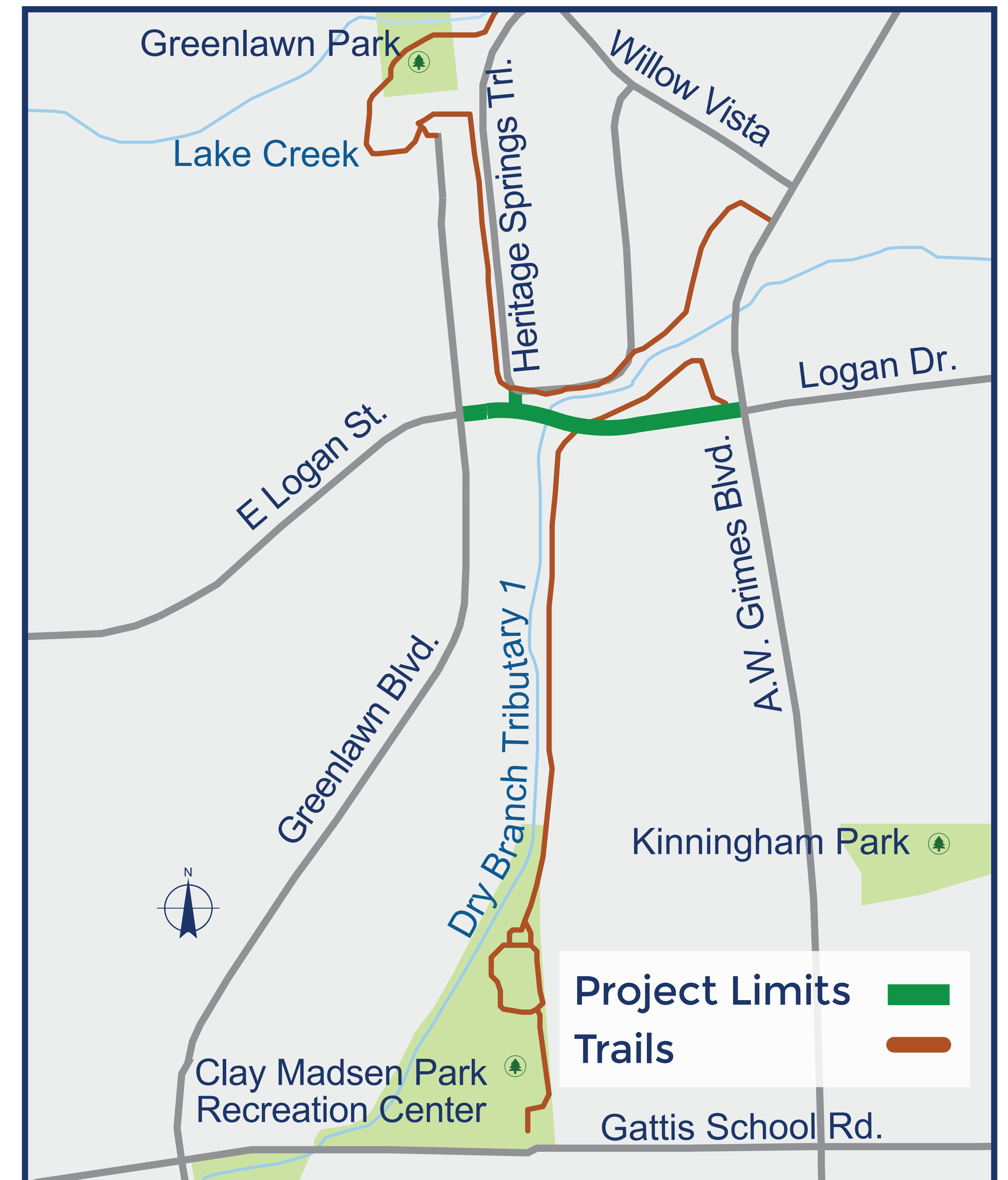
- Provide greater neighborhood connectivity by extending Logan St. to A.W. Grimes Blvd.
- Improve access for emergency services

Improvements

- Two-lane extension of Logan St. to A.W. Grimes Blvd. with a bridge over Dry Branch Tributary 1
- Connecting Heritage Springs Trl. to Logan St.
- Adding sidewalks on both sides of Logan St.
- Connecting trails to Logan St. sidewalks for improved walkability to the school and recreation center

Timeline

- Design: 2018 to 2019
- Construction: No earlier than 2020



Design Considerations

- Maintain 2-lane footprint and existing speed limit
- Bridge elevation to reduce visual impacts
- Intersections
 - Stop signs at Heritage Springs Trl. and Greenlawn Blvd.
 - Connection to A.W. Grimes intersection
- Environmental
 - Evaluation of biological, archeological, water, historic, and other resources
 - No major impacts anticipated
- Other Design Features
 - Bridge railing
 - Maintain character of trails and sidewalks
 - Bridge lighting



Bridge design will be similar to crossing at A.W. Grimes



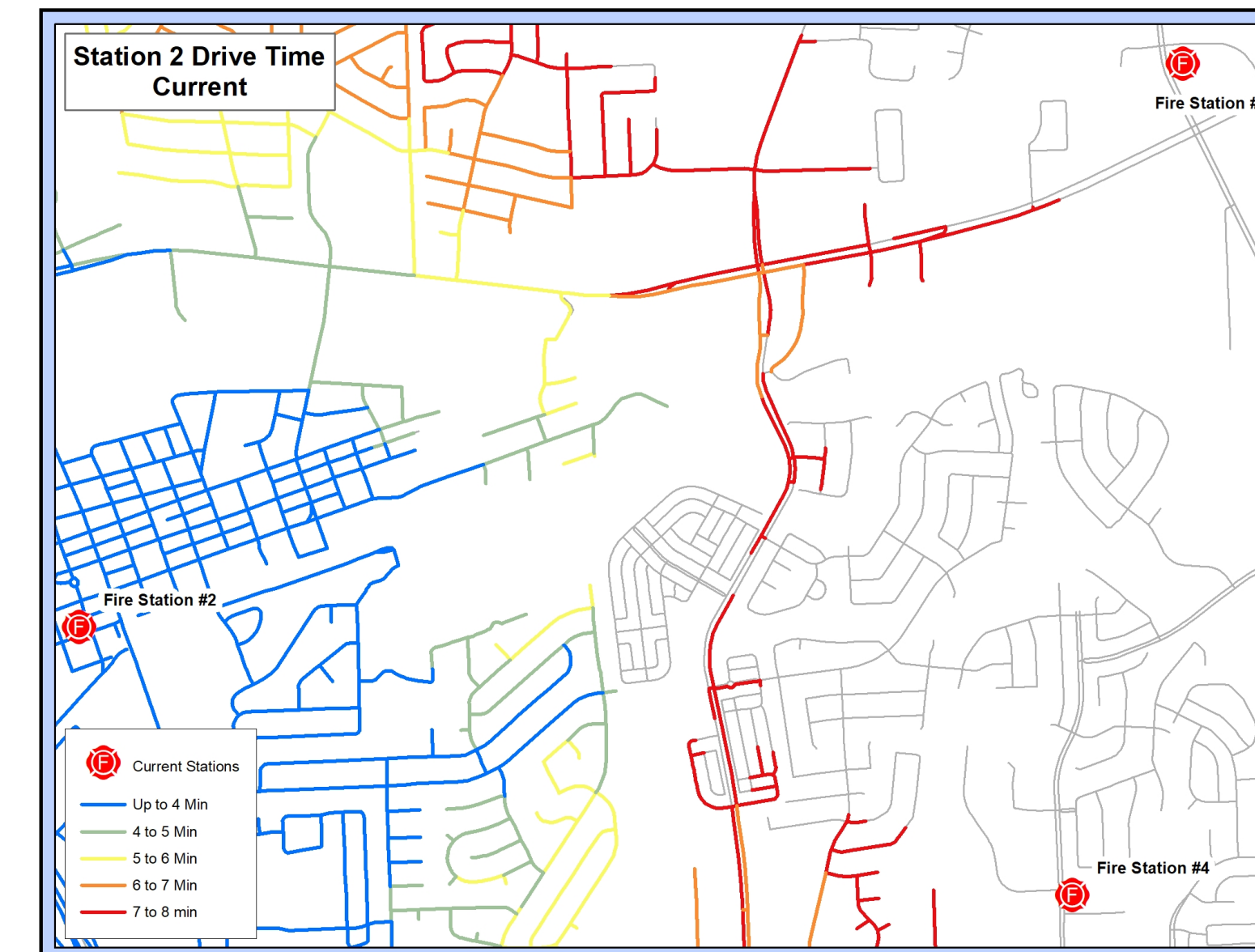
Emergency Response

Evaluating emergency response time considers multiple factors

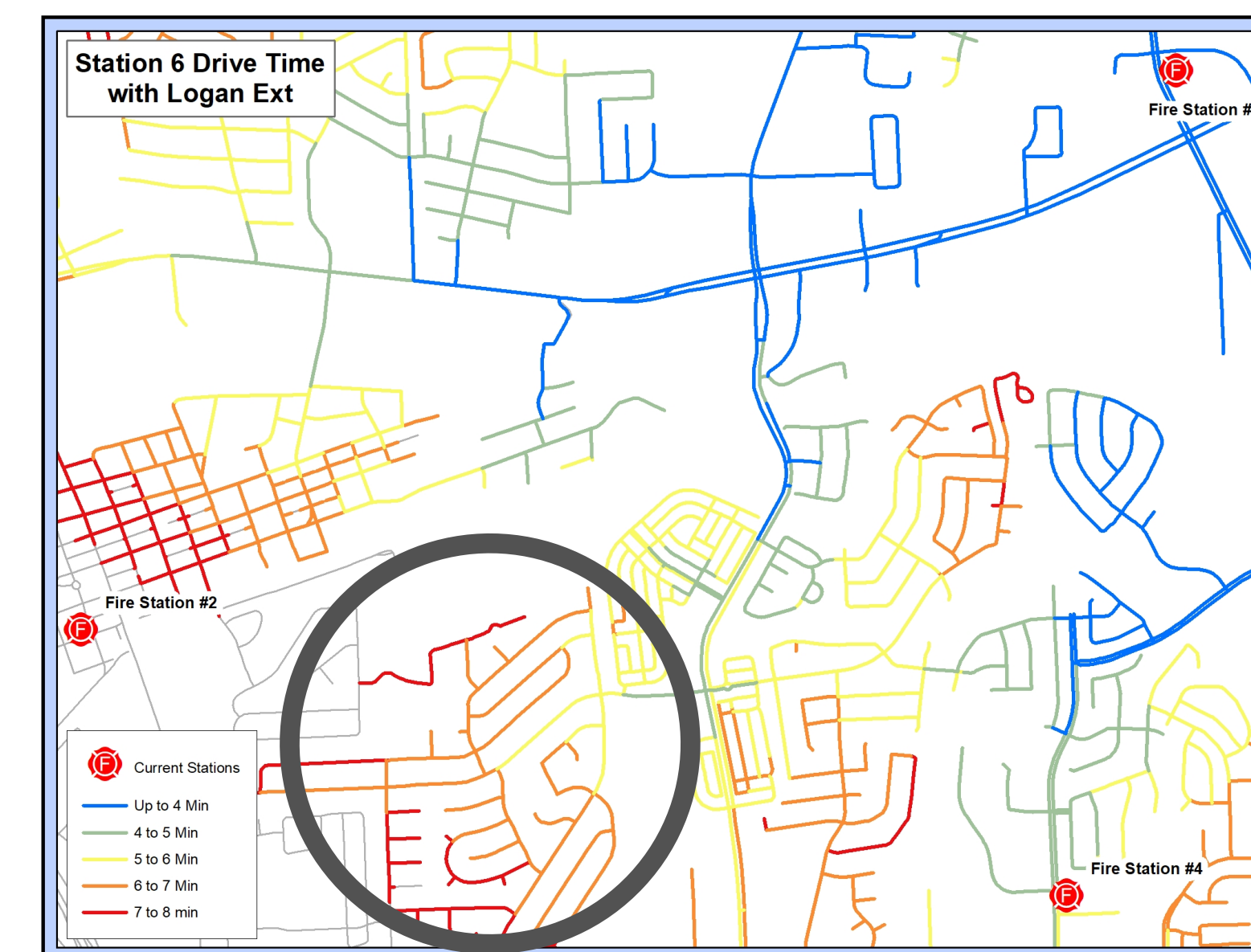
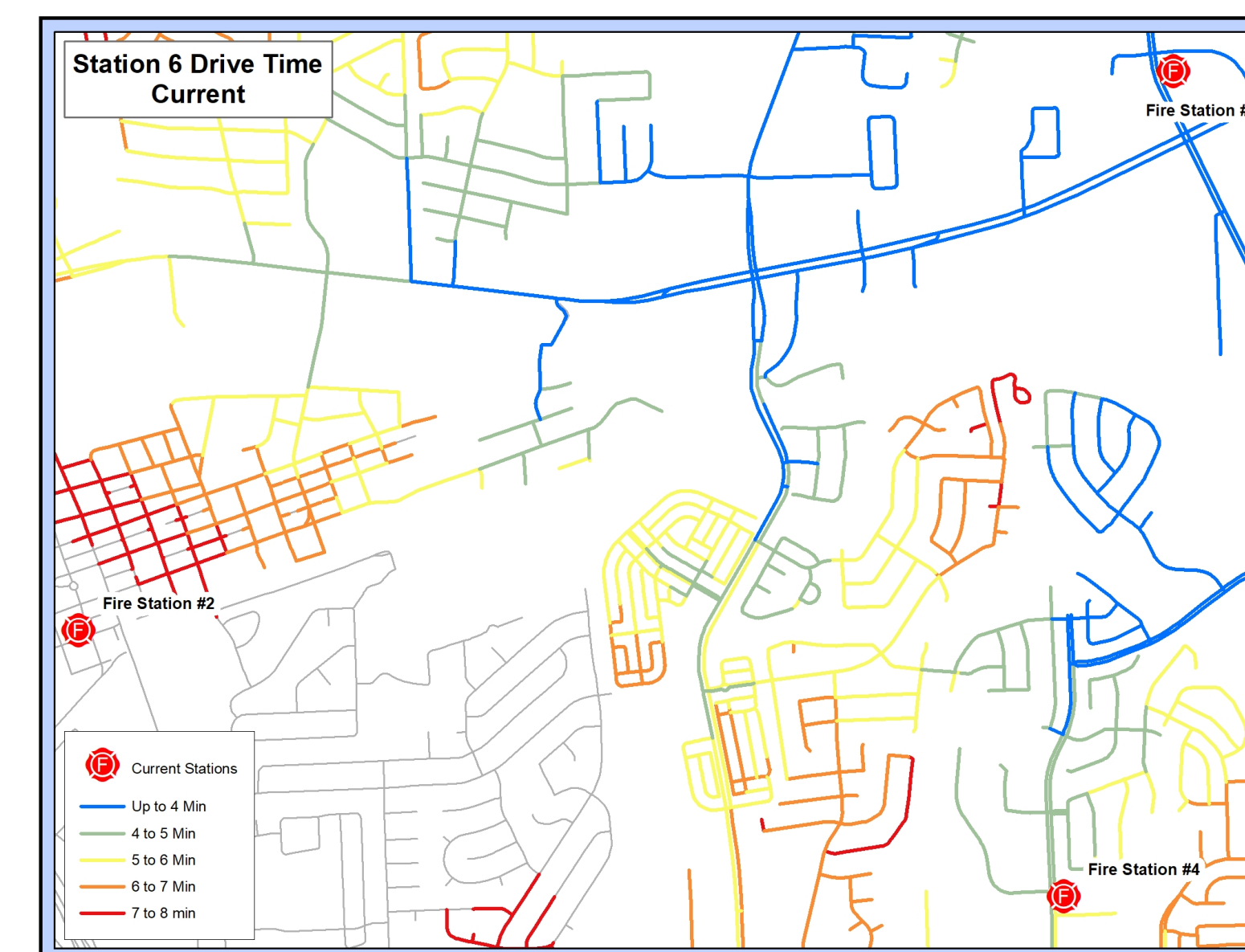
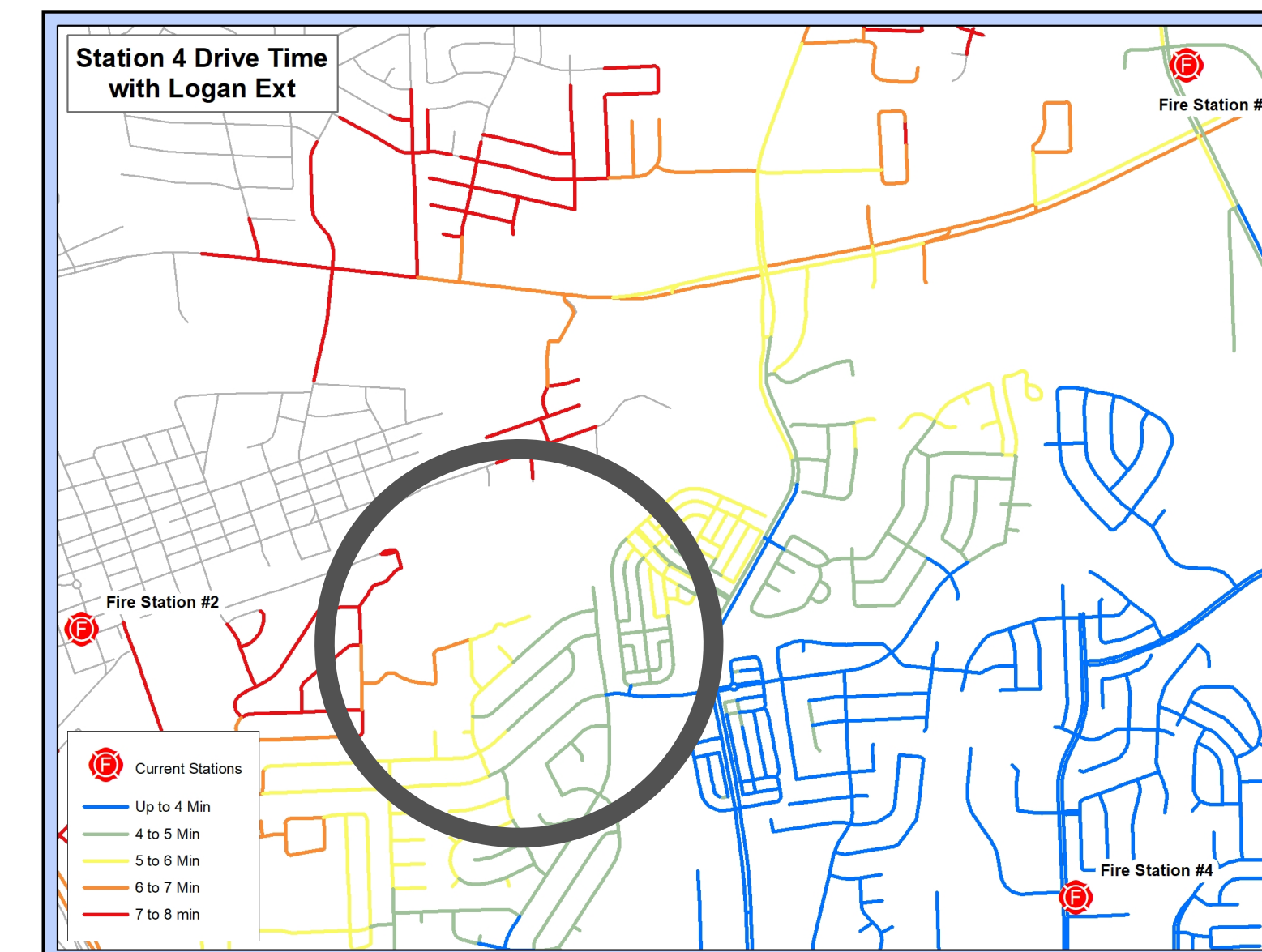
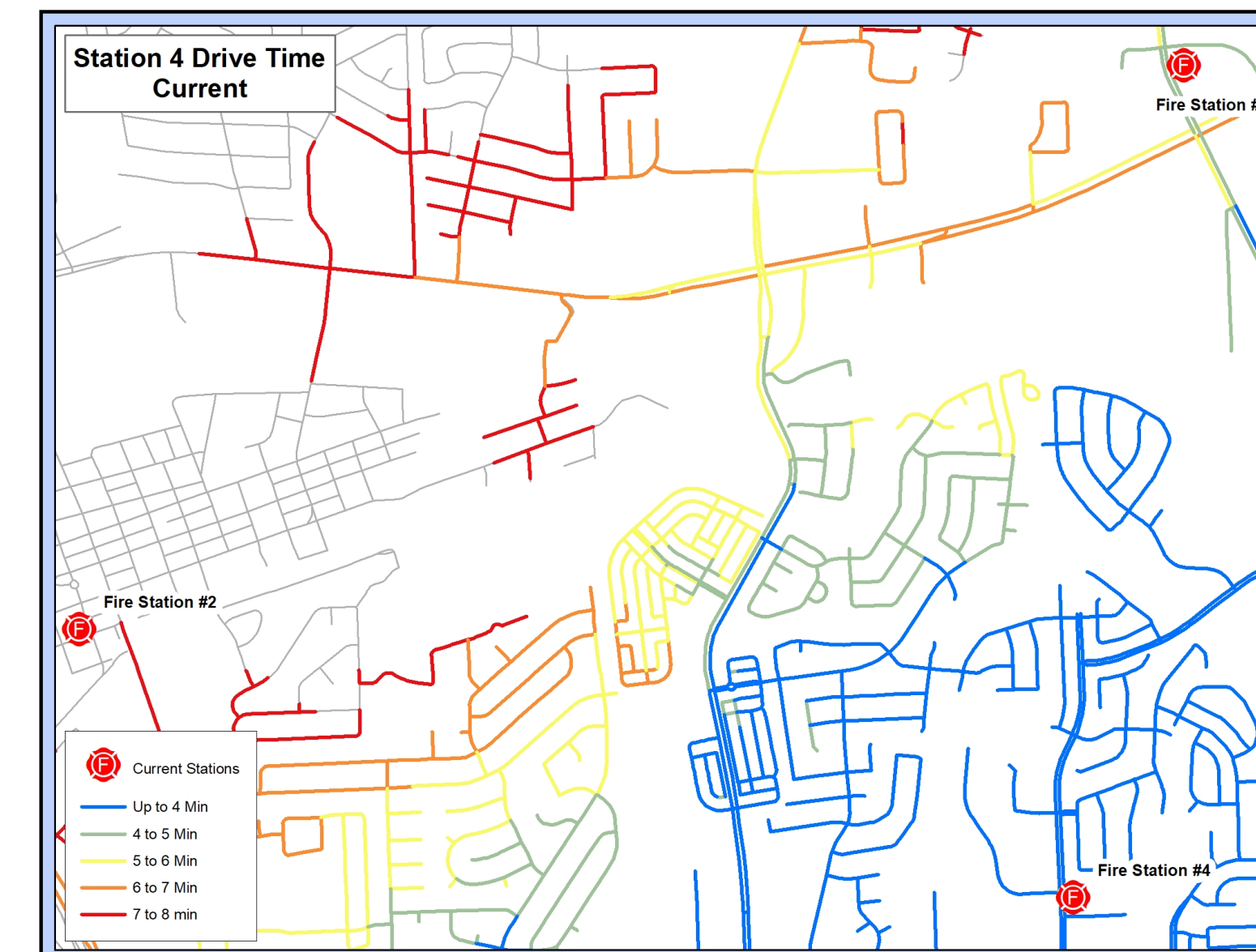
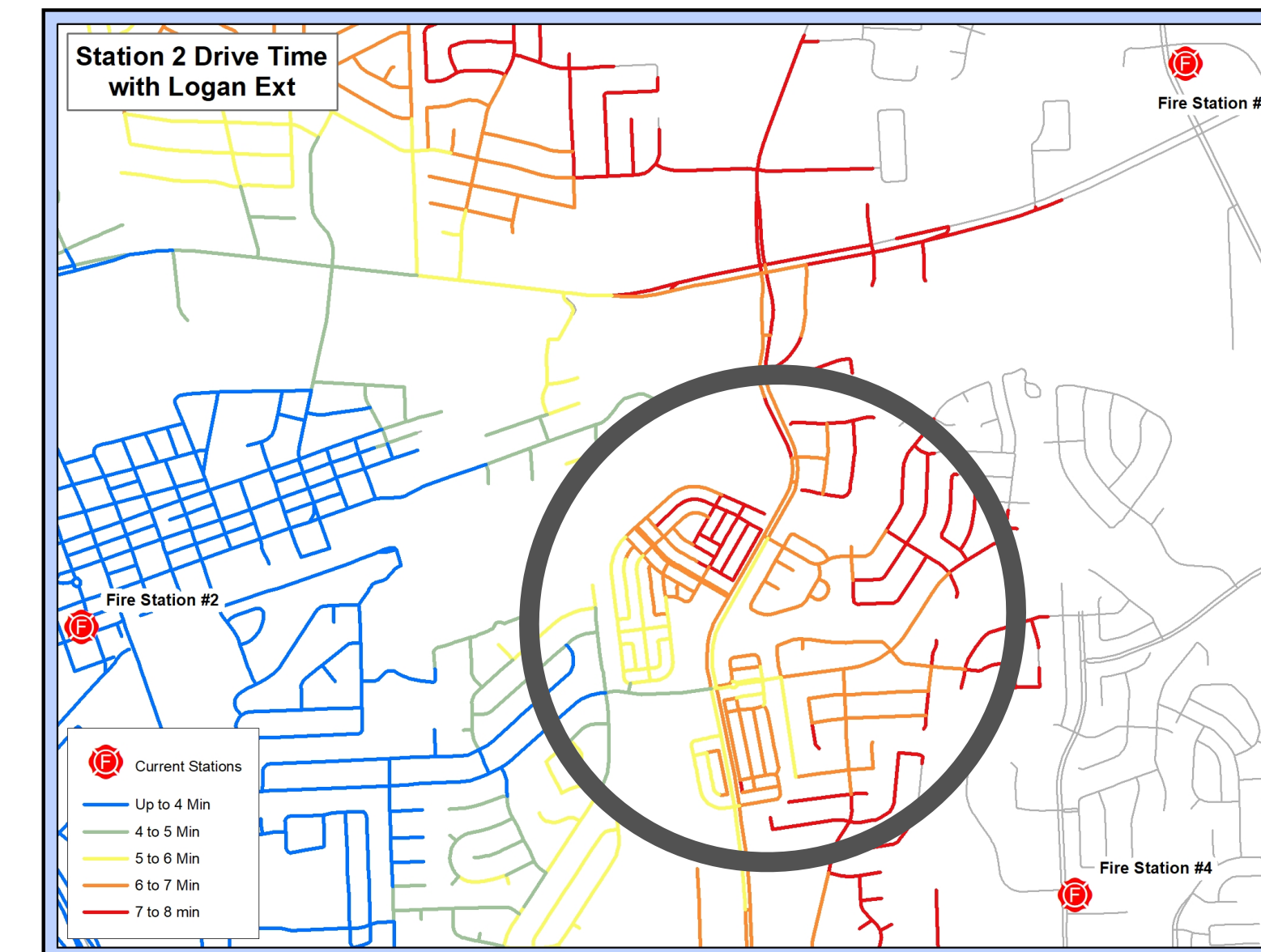
- Station locations
- Redundancy and back up stations
- Roadway connections for access
- Avoidance of potential traffic impacts (congestion or accidents)

The Logan Street extension provides drive time benefits for Stations 2, 4, & 6

Current Drive Time



Anticipated Drive Time with Logan St. Extension



LOGAN STREET
Connection Project

