



ROUND ROCK TEXAS
PLANNING & DEVELOPMENT SERVICES DEPARTMENT

Mayor
Craig Morgan

Mayor Pro-Tem
Writ Baese

Councilmembers
Tammy Young
Rene Flores
Matthew Baker
Will Peckham
Hilda Montgomery

City Manager
Laurie Hadley

City Attorney
Stephan L. Sheets

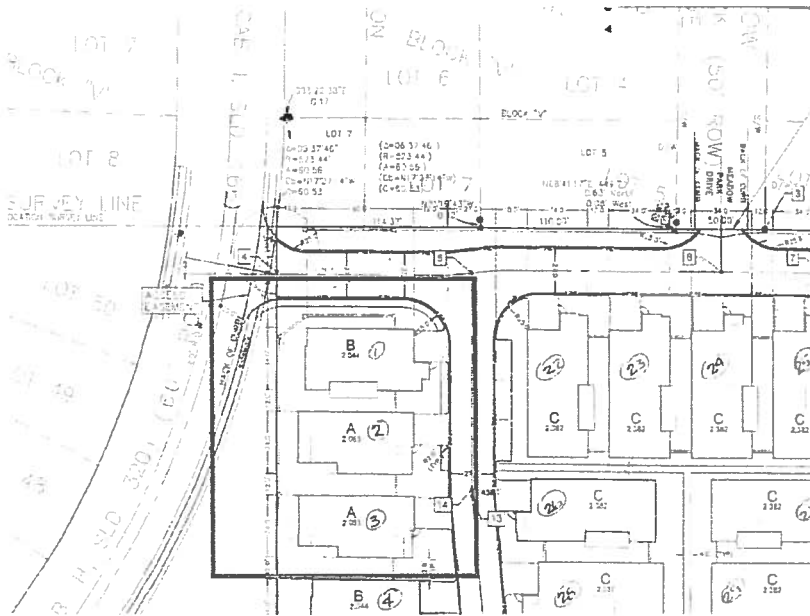
February 22, 2019

Quinn Gray, Operations Manager
AVI Homes
11130 Jollyville Road, Suite 304
Austin, TX 78759

Re: Planned Unit Development (PUD) No. 109 – Cottages at Meadow Lake rear setbacks

Dear Mr. Gray:

The subject PUD requires a 20-ft. rear building setback when adjacent to the parcel boundary. The site plan for Cottages at Meadow Lake, SDP 1706-002, referenced in the illustration below, indicates that the setbacks for Units 1, 2 and 3 are less than 20 feet. Given that these units border a parcel containing City park land, it is my determination that these setbacks effectively meet the rear setback requirement.



Sincerely,

Brad Wiseman, AICP, Director
Planning and Development Services

Cc: Jorge Scott, Plan Examiner