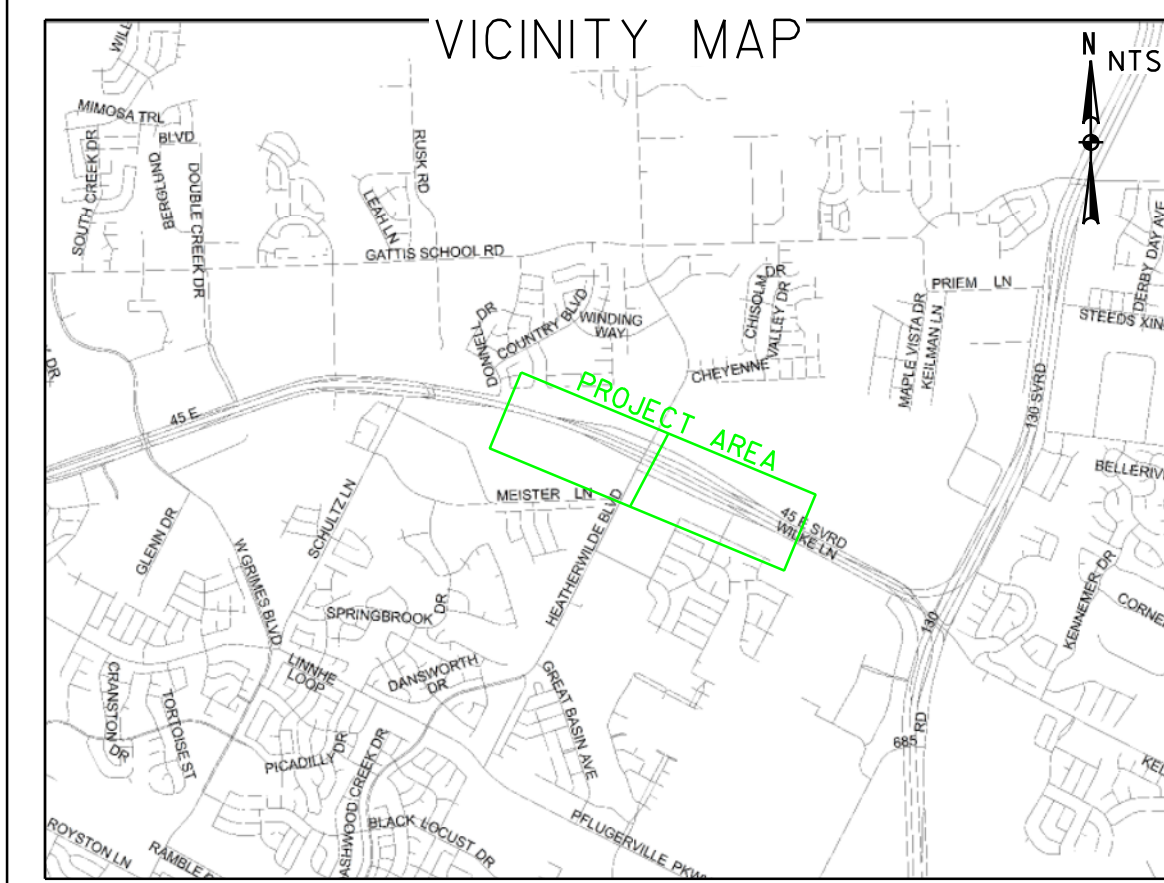


SH 45 FRONTAGE ROAD PROPOSED RAMP CONCEPT

DESIGN CRITERIA FROM ROADWAY DESIGN MANUAL

ITEM	MAIN LANES		RAMPS	
	MINIMUM	MINIMUM	MINIMUM	MINIMUM
Design Speed	70 mph	50 mph	50 mph	50 mph
Horizontal Alignment				
Sloping Sight Distance (FT)	730'	425'		
Minimum Centerline Radius (FT)	3390'	1050'		
Vertical Alignment				
K value for Crest Curves, min.	247'	84'		
K value for Sag Curves, min.	181'	96'		
Vertical Clearance				
Over Roadways	16.5' min.	16.5' min.		
Cross Section Elements				
Width of Travel Lanes	12'	14'		
Number of mainlines	2 each direction (3 ultimate)	1		
Shoulder Widths:				
Inside	4' min	2' Rwy, 4' Str		
Outside	10'	6' min		
Offset to face of curb	N/A	N/A		
Curb Height	6"	4" mountable		
Cross slope (lane and shoulder)	2.50%	2.50%		

ITEM	FRONTAGE ROADS		U-TURNS	
	MINIMUM	MINIMUM	MINIMUM	MINIMUM
Design Speed	40 mph	15 mph		
Horizontal Alignment				
Sloping Sight Distance (FT)	305'	80'		
Minimum Centerline Radius (FT)	762'	50'		
Vertical Alignment				
K value for Crest Curves, min.	44'	3'		
K value for Sag Curves, min.	64'	10'		
Vertical Clearance				
Over Roadways	16.5' min.			
Cross Section Elements				
Width of Travel Lanes	12'	12'		
Number of mainlines over Lake	N/A	N/A		
Number of mainlines	3	1		
Shoulder Widths:				
Inside	N/A	N/A		
Outside	N/A	N/A		
Offset to face of curb	1' min	1' min		
Curb Height	6"	N/A		
Cross slope (lane and shoulder)	2.00%	2.00%		



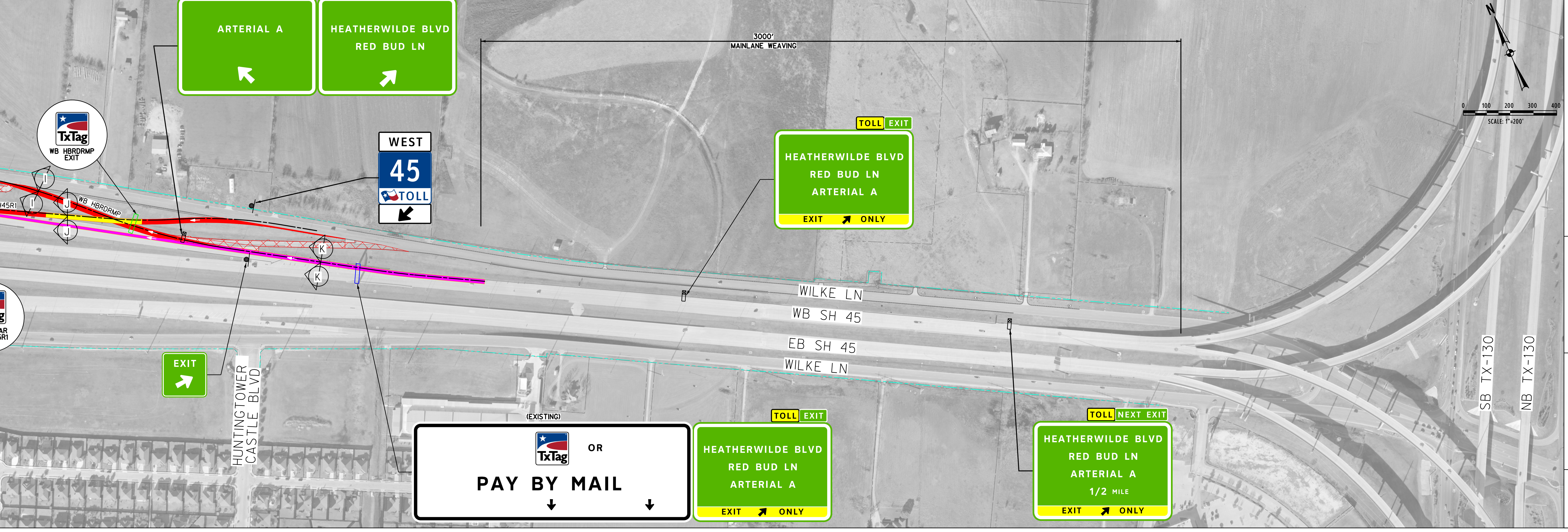
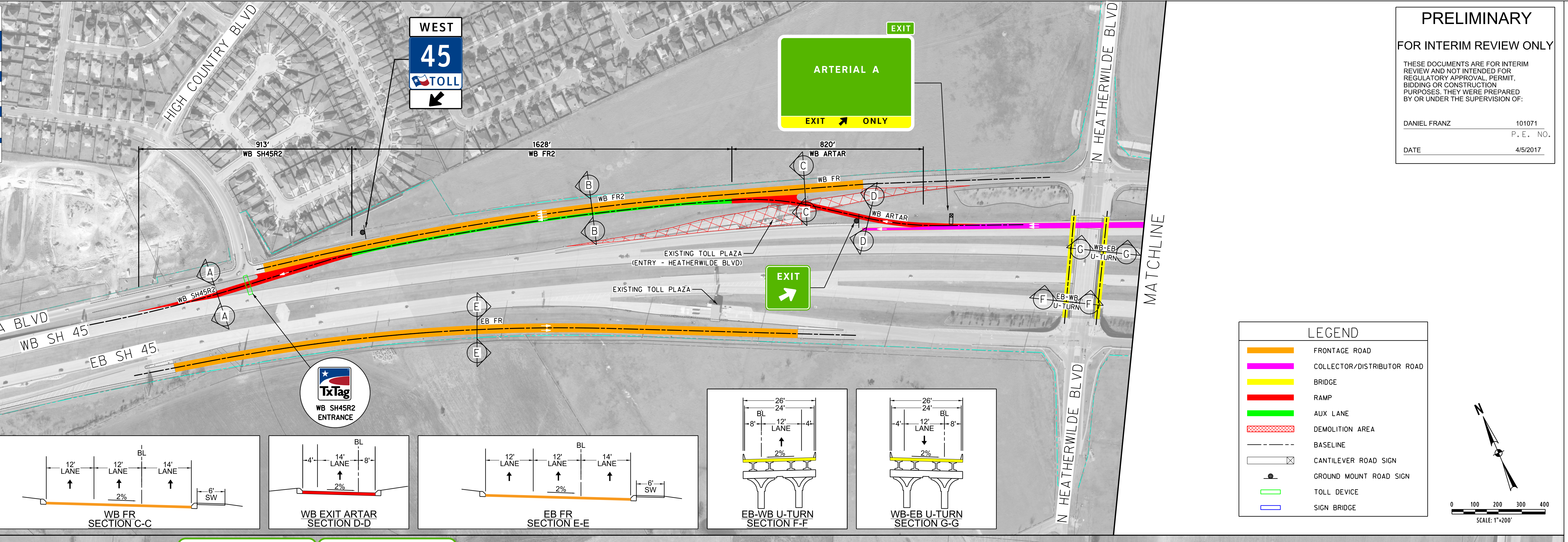
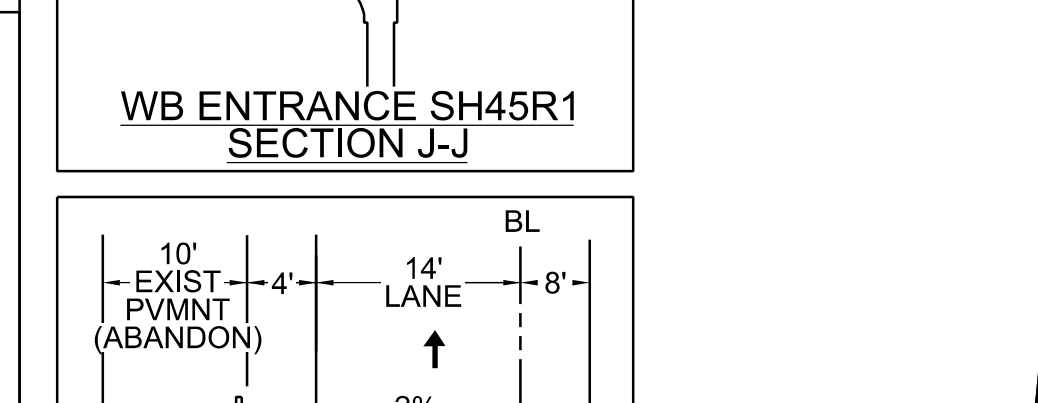
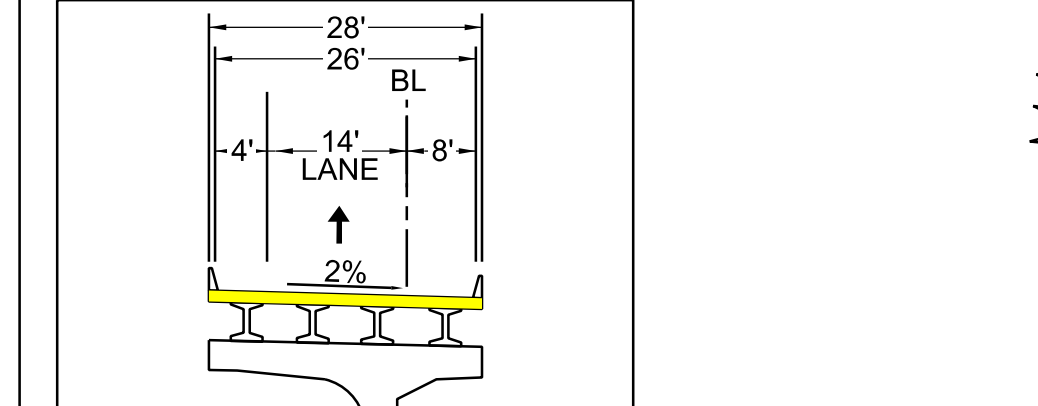
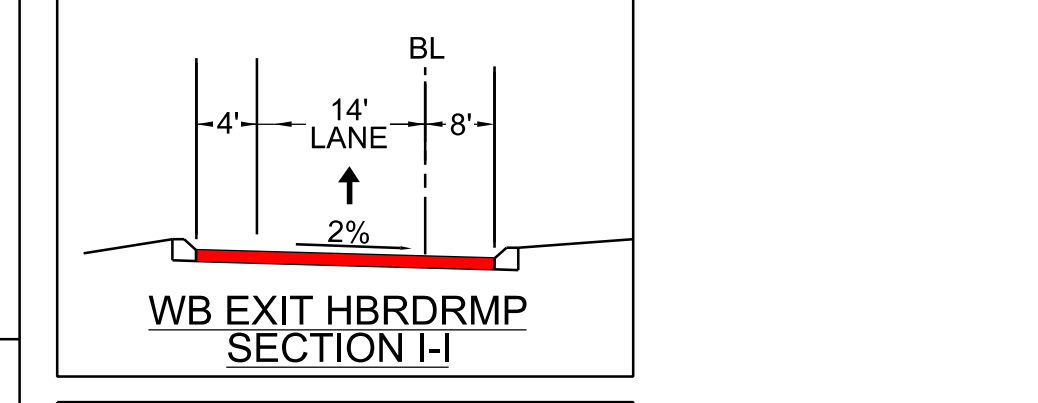
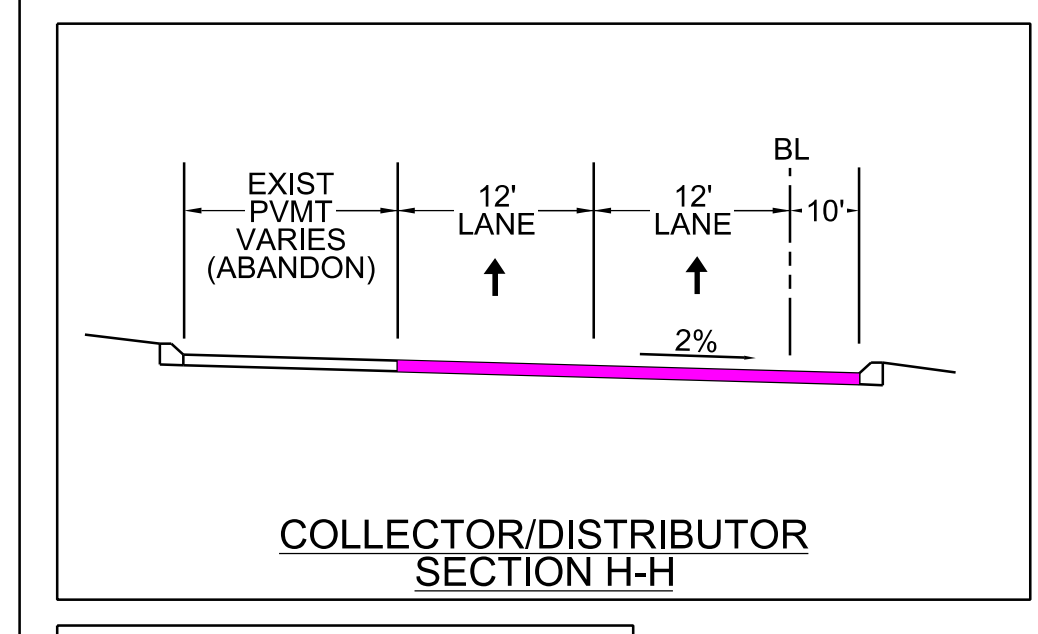
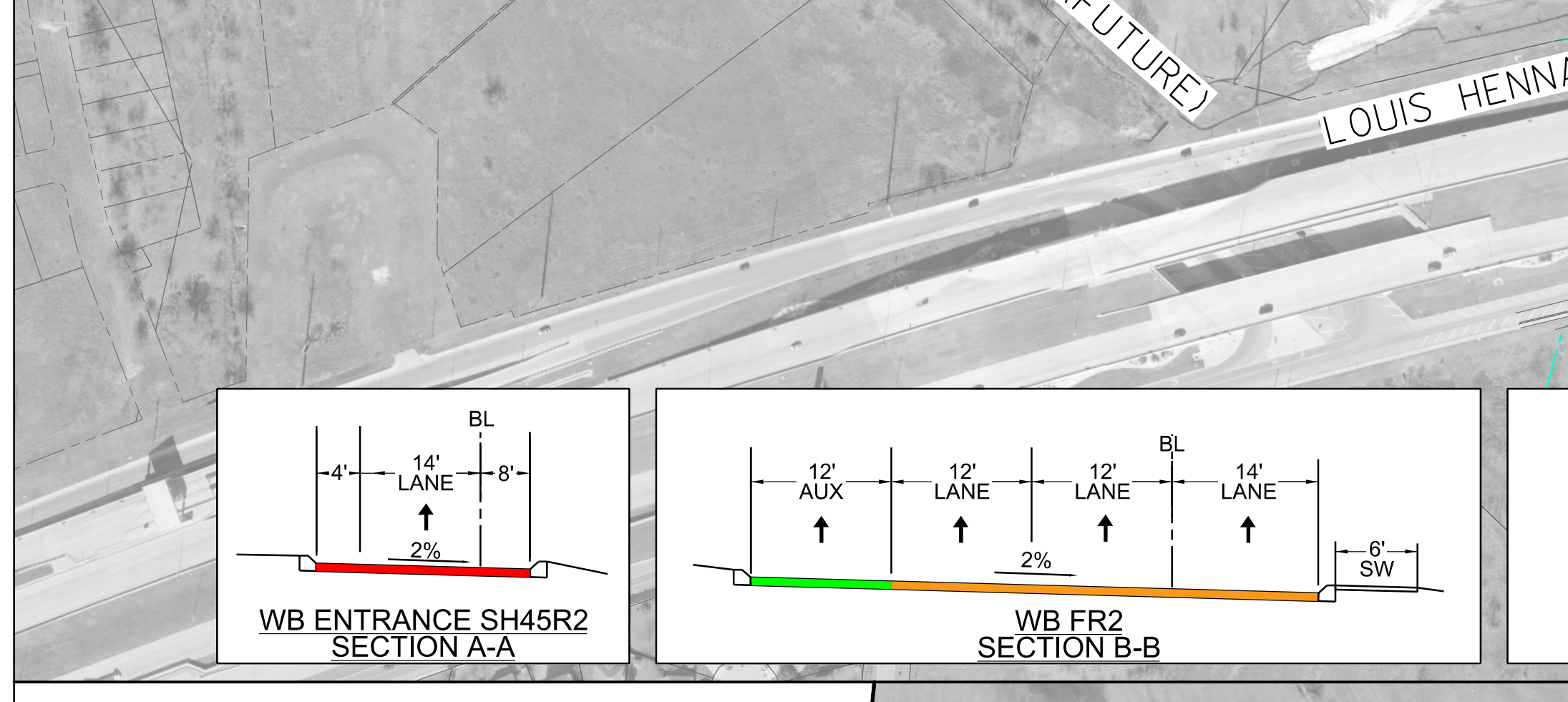
9500 AMBERGLEN BLVD
BLDG F, SUITE 125
AUSTIN, TEXAS 78729
TEL (512) 777-4600
FAX (512) 252-8141

HALFF
APRIL 2017

Existing Toll Locations and Rates (Effective Jan. 1, 2017)
(Source TxTag.org)

Central Texas Turnpike System-Austin	2-Axis		3-Axis		4-Axis	
	2016	2017	2016	2017	2016	2017
Entrance and Exit Ramps at US 79, Chandler Rd. and Eloy Rd.	\$ 0.75	\$ 1.00	\$ 0.76	\$ 1.01	\$ 1.50	\$ 2.00
Entrance and Exit Ramps at Schultz Lane, Wilke Lane (Heatherwilde)	\$ 1.06	\$ 1.41	\$ 1.07	\$ 1.42	\$ 2.12	\$ 2.82

Mainline Plazas: Lake Creek and Heatherwilde	2016		2017	
	TxTag	PBM	TxTag	PBM
Entrance and Exit Ramps at Schultz Lane, Wilke Lane (Heatherwilde)	\$ 1.06	\$ 1.41	\$ 1.07	\$ 1.42



PRELIMINARY
FOR INTERIM REVIEW ONLY

THESE DOCUMENTS ARE FOR INTERIM REVIEW AND NOT INTENDED FOR REGULATORY APPROVAL, PERMIT, BIDDING OR CONSTRUCTION PURPOSES. THEY WERE PREPARED BY OR UNDER THE SUPERVISION OF:

DANIEL FRANZ 101071
P. E. NO.
DATE 4/5/2017

LEGEND

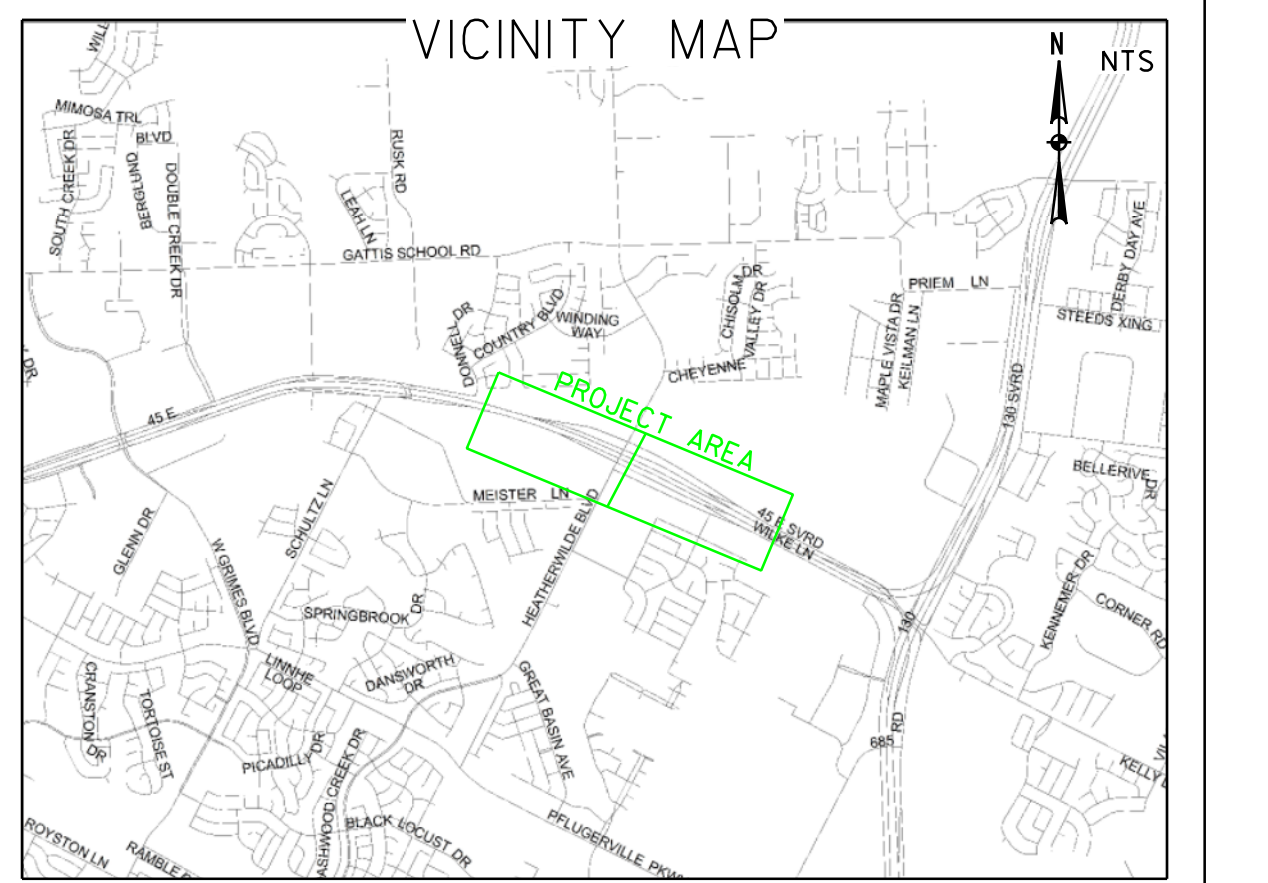
- FRONTAGE ROAD
- COLLECTOR/DISTRIBUTOR ROAD
- BRIDGE
- RAMP
- AUX LANE
- DEMOLITION AREA
- BASELINE
- CANTILEVER ROAD SIGN
- GROUND MOUNT ROAD SIGN
- TOLL DEVICE
- SIGN BRIDGE

SH 45 FRONTAGE ROAD PROPOSED RAMP CONCEPT

DESIGN CRITERIA FROM ROADWAY DESIGN MANUAL

ITEM	MAIN LANES		RAMPS	
	MINIMUM	MINIMUM	MINIMUM	MINIMUM
Design Speed	70 mph	50 mph	50 mph	50 mph
Horizontal Alignment				
Sloping Sight Distance (FT)	730'	425'		
Minimum Centerline Radius (FT)	3390'	1050'		
Vertical Alignment				
K value for Crest Curves, min.	247'	84'		
K value for Sag Curves, min.	181'	96'		
Vertical Clearance				
Over Roadways	16.5' min.	16.5' min.		
Cross Section Elements				
Width of Travel Lanes	12'	14'		
Number of mainlines	2 each direction (3 ultimate)	1		
Shoulder Widths:				
Inside	4' min	2' Rwy, 4' Str		
Outside	10'	6' min		
Offset to face of curb	N/A	N/A		
Curb Height	6"	4" mountable		
Cross slope (lane and shoulder)	2.50%	2.50%		

ITEM	FRONTAGE ROADS		U-TURNS	
	MINIMUM	MINIMUM	MINIMUM	MINIMUM
Design Speed	40 mph	15 mph		
Horizontal Alignment				
Sloping Sight Distance (FT)	305'	80'		
Minimum Centerline Radius (FT)	762'	50'		
Vertical Alignment				
K value for Crest Curves, min.	44'	3'		
K value for Sag Curves, min.	64'	10'		
Vertical Clearance				
Over Roadways	16.5' min.			
Cross Section Elements				
Width of Travel Lanes	12'	12'		
Number of mainlines over Lake	N/A	N/A		
Number of mainlines	3	1		
Shoulder Widths:				
Inside	N/A	N/A		
Outside	N/A	N/A		
Offset to face of curb	1' min	1' min		
Curb Height	6"	N/A		
Cross slope (lane and shoulder)	2.00%	2.00%		



9500 AMBERGLEN BLVD
BLDG F, SUITE 125
AUSTIN, TEXAS 78729
TEL (512) 777-4600
FAX (512) 252-8141

HALFF
APRIL 2017