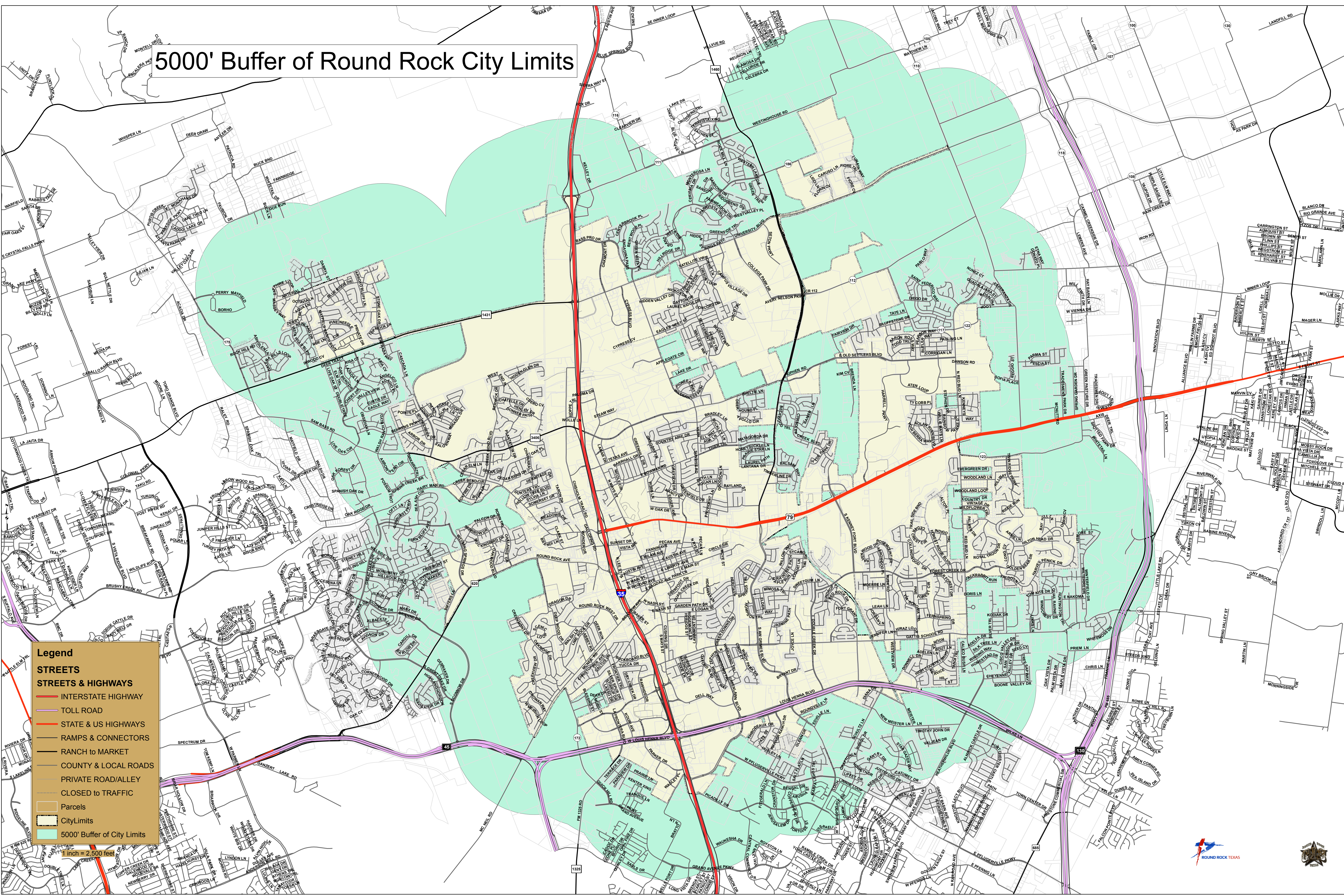


5000' Buffer of Round Rock City Limits



Legend

STREETS

- INTERSTATE HIGHWAY
- TOLL ROAD
- STATE & US HIGHWAYS
- RAMPS & CONNECTORS
- RANCH to MARKET
- COUNTY & LOCAL ROADS
- PRIVATE ROAD/ALLEY
- CLOSED to TRAFFIC
- Parcels
- City Limits
- 5000' Buffer of City Limits

1 inch = 2,500 feet

