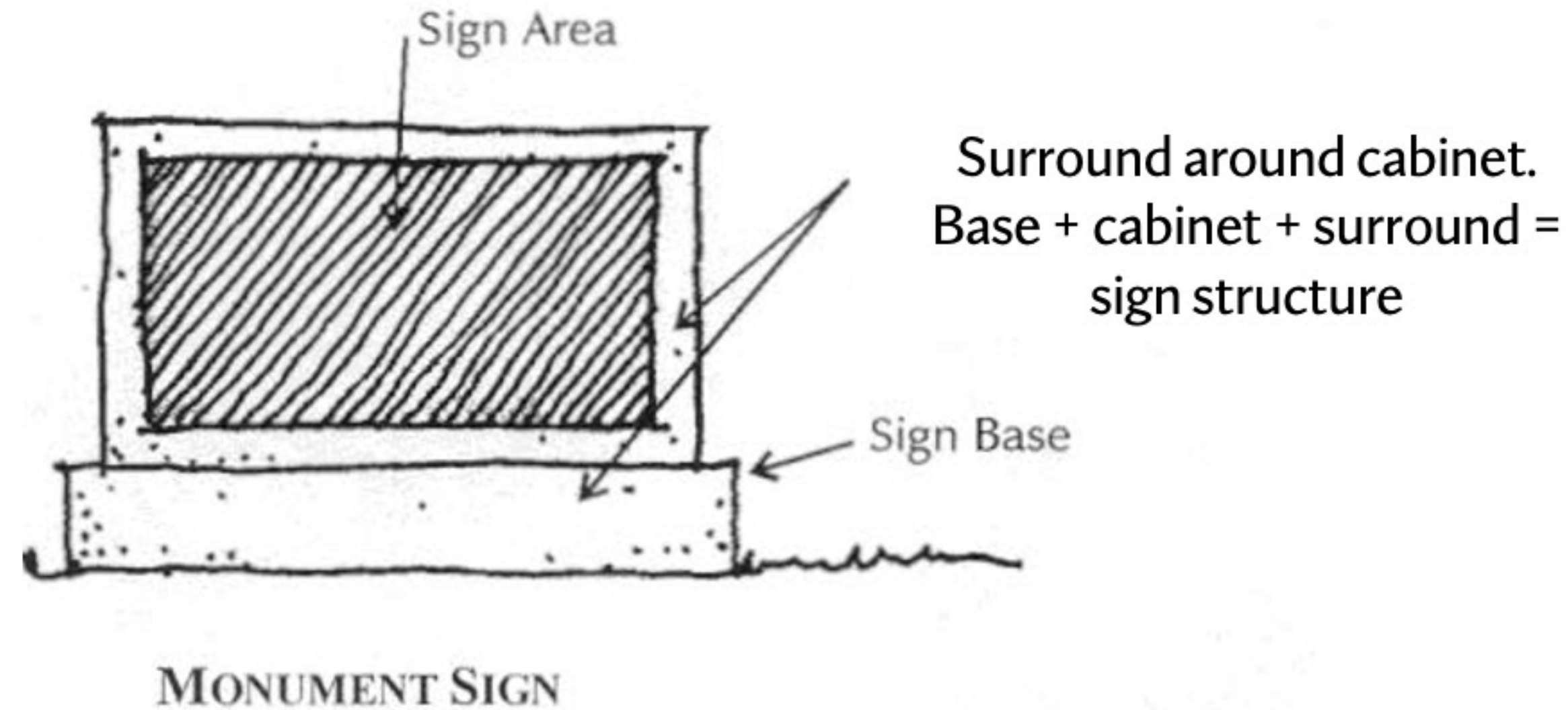




14. Monument Signs

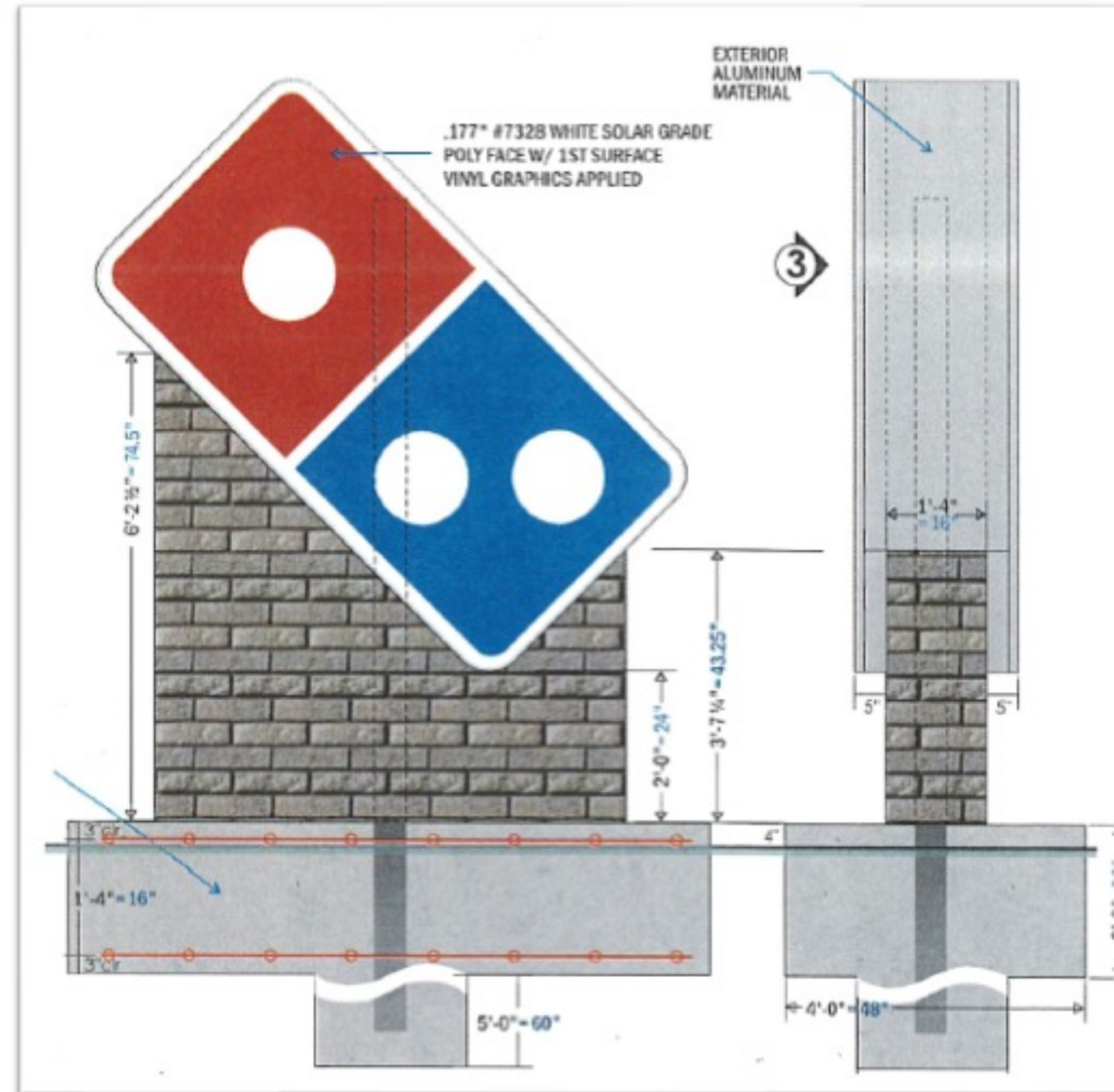


Typical monument sign includes:

- A base
- An internally lit plex-face cabinet
- A surround around the cabinet to integrate the sign with the base and to cover the retainer around the cabinet



14. Monument Signs: Logo Cabinet Surround



A surround is not required when a logo is attached to sign display area and base.



14. Monument Signs: Metal Cabinet Base



- Metal base would be allowed.
- A surround would not be required when cabinet is made entirely of metal, including base.



14. Monument Signs: EMC on a Lot Less than Five Acres

Removed 32 square feet maximum of EMC display area.

Electronic Messaging Center (EMC)	EMCs shall display text only for up to 40% or 32 square feet of the sign display area, whichever is less . EMCs shall not be allowed on neighborhood roads or in OS and DT special areas with the exception of use for community services, schools, places of worship, or fuel station pricers.
-----------------------------------	---