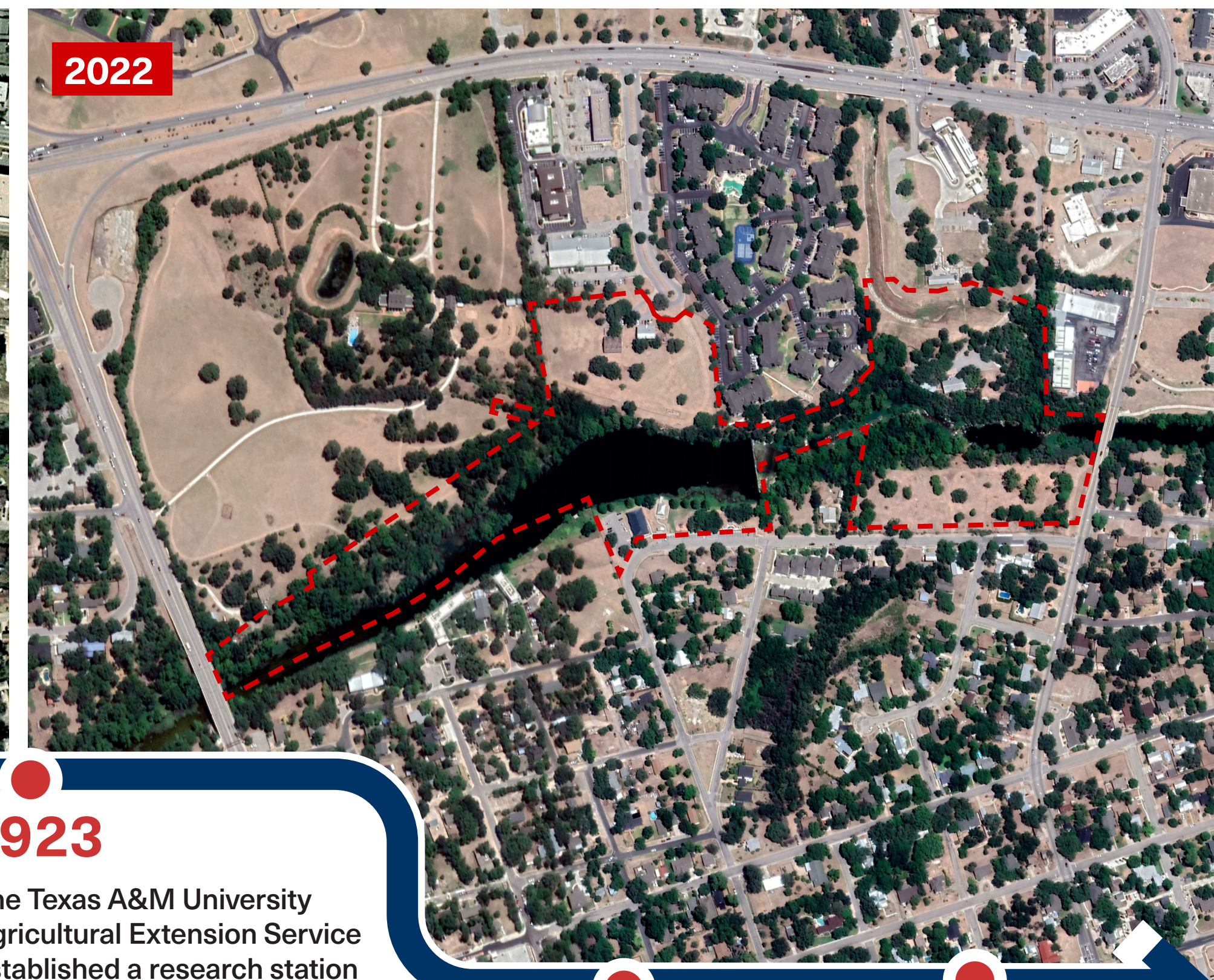
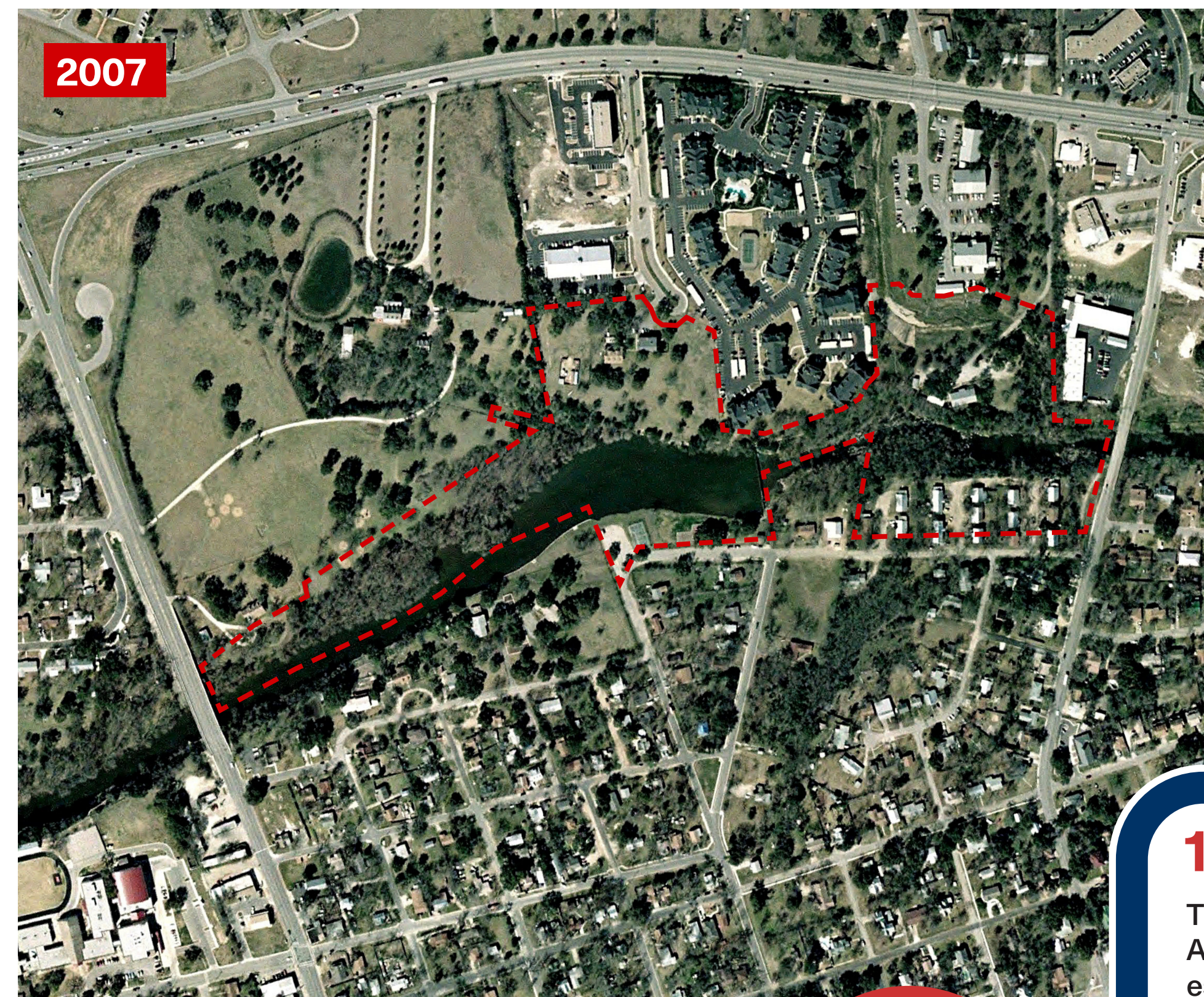


History of Round Rock

Native American tribes, including the Tonkawa, Karankawa, and Comanche, originally inhabited the area.



Start



During the Civil War, Round Rock was the site of a major battle between Union and Confederate forces.

1862

1851

In 1851, a small community called Brushy was established on the site of what is now Round Rock.



1870

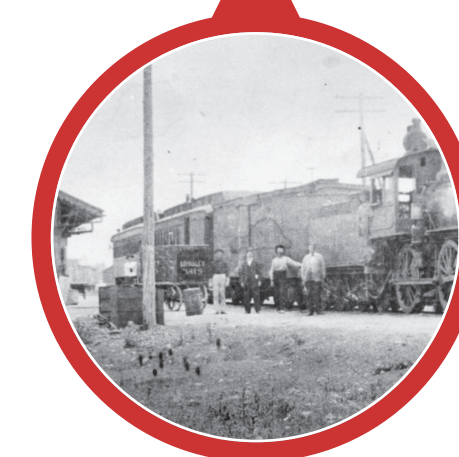


After the war, Round Rock became a center of agriculture, with cotton and corn being the main crops.



1878

1904



1923

The Texas A&M University Agricultural Extension Service established a research station in Round Rock, which helped to boost the city's economy.

1913

During 1910s, many Mexican families migrated to Round Rock, fleeing the civil war in their native country.

1993
Dell campus moved to Round Rock.

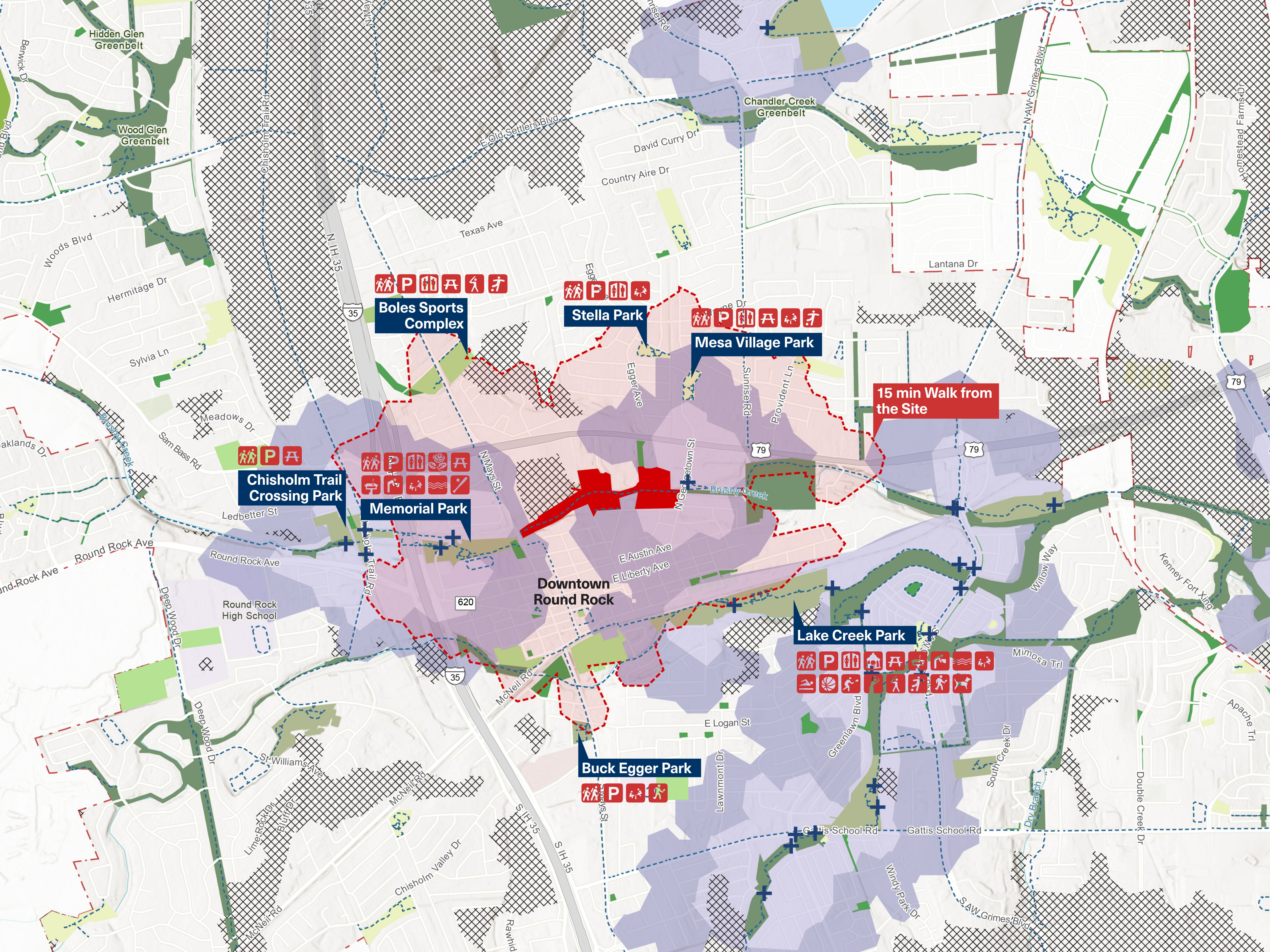
Current



ROUND ROCK TEXAS

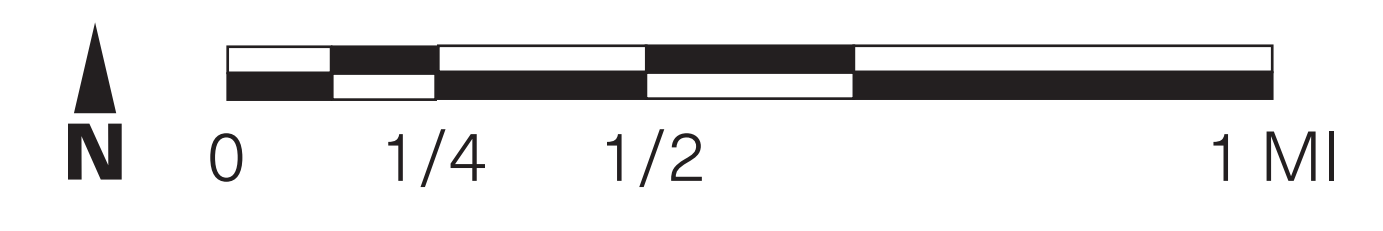
DESIGNWORKSHOP

April 18, 2023

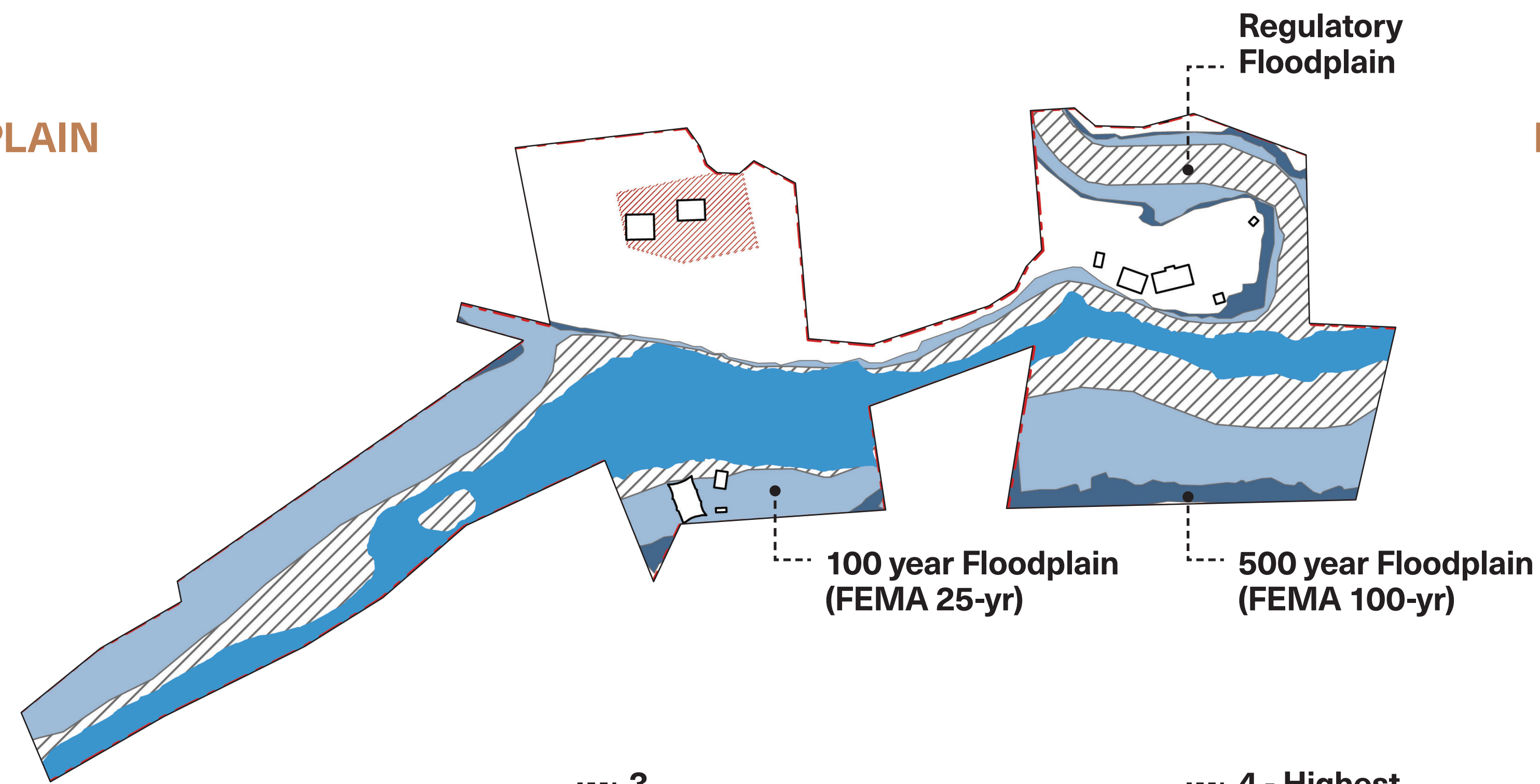


- Round Rock Downtown Park
- Park Typology**
- Regional Park
- Metropolitan Park
- Community Park
- Neighborhood Park
- Linear/Greenbelt
- Open Space
- Special Use
- Trail
- + Trailhead
- Walking Distance from Trailhead**
- 5 min
- 10 min
- Walking Distance from the Site
- 10 min Walking Gap from Parks

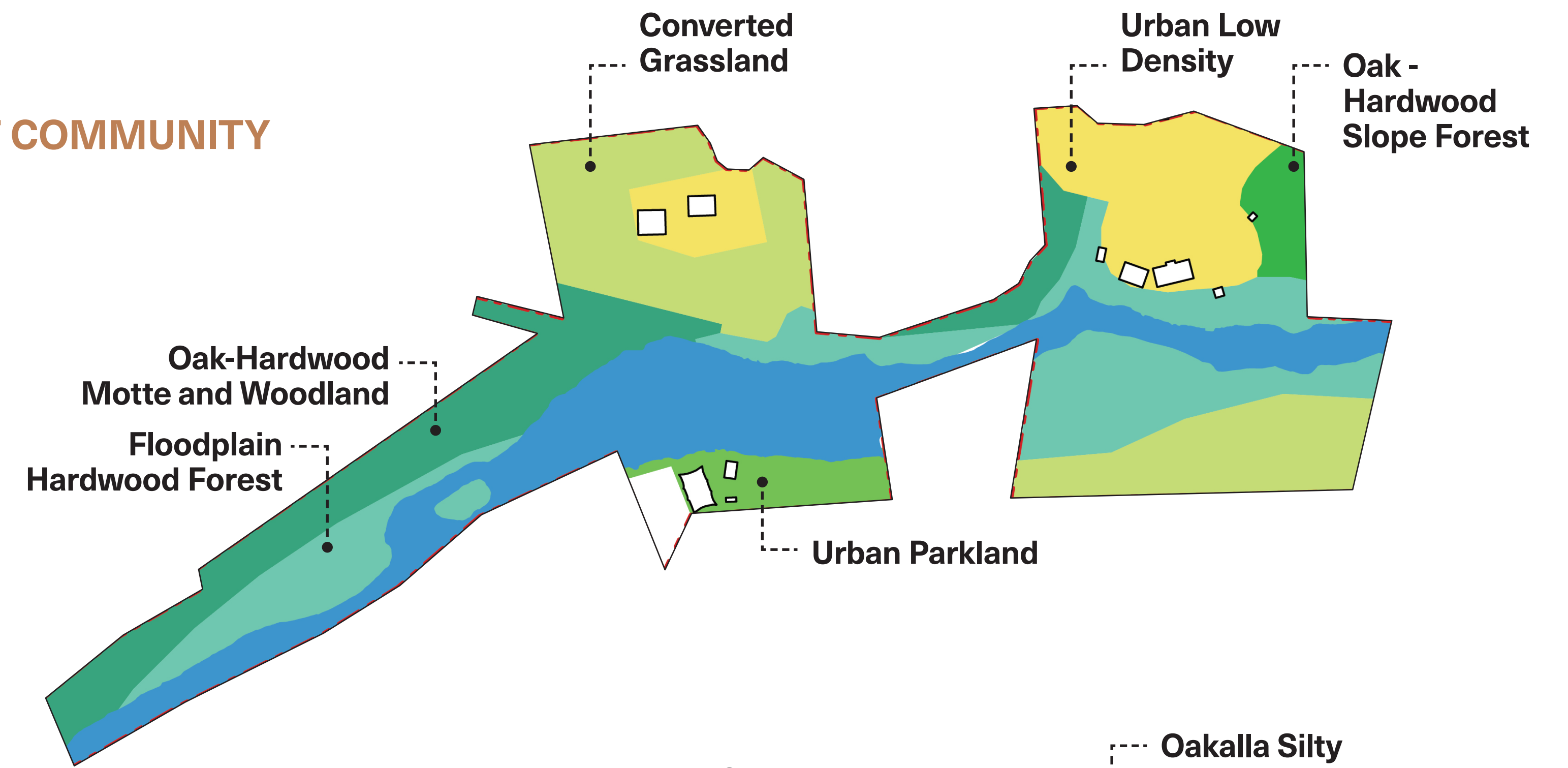
Round Rock Downtown Park | PARK ACCESS GAP ANALYSIS



FLOODPLAIN

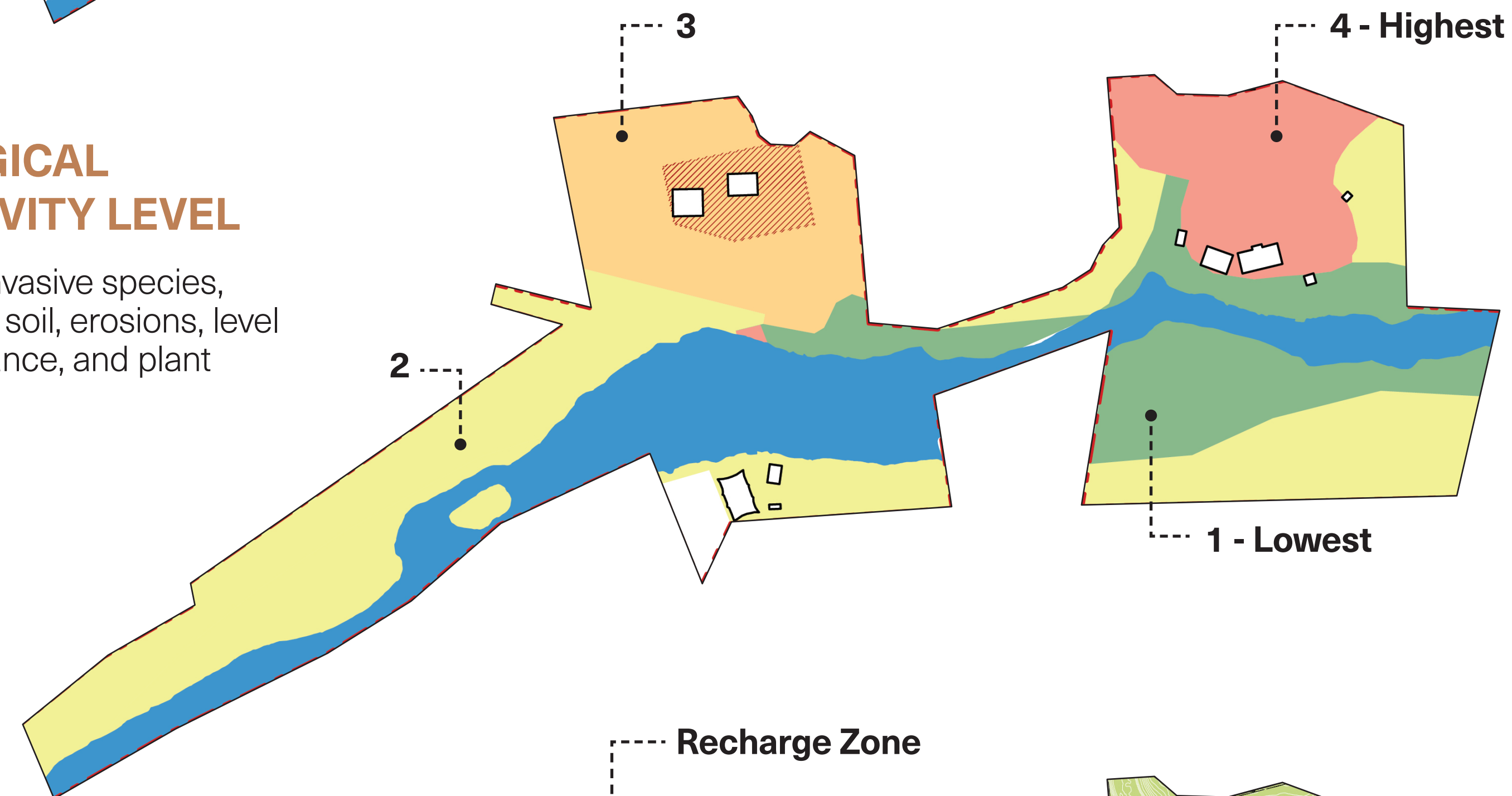


PLANT COMMUNITY

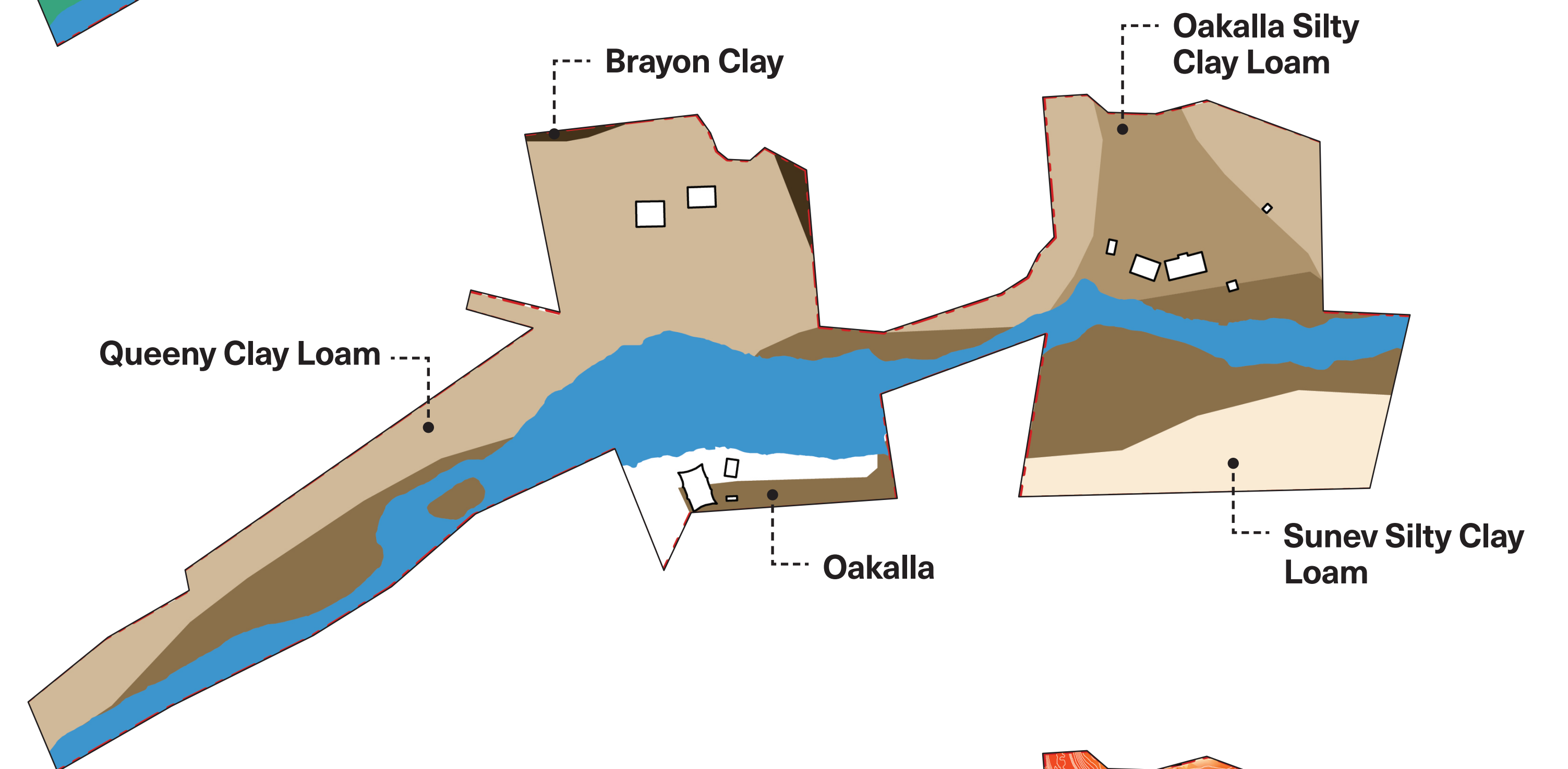


ECOLOGICAL SENSITIVITY LEVEL

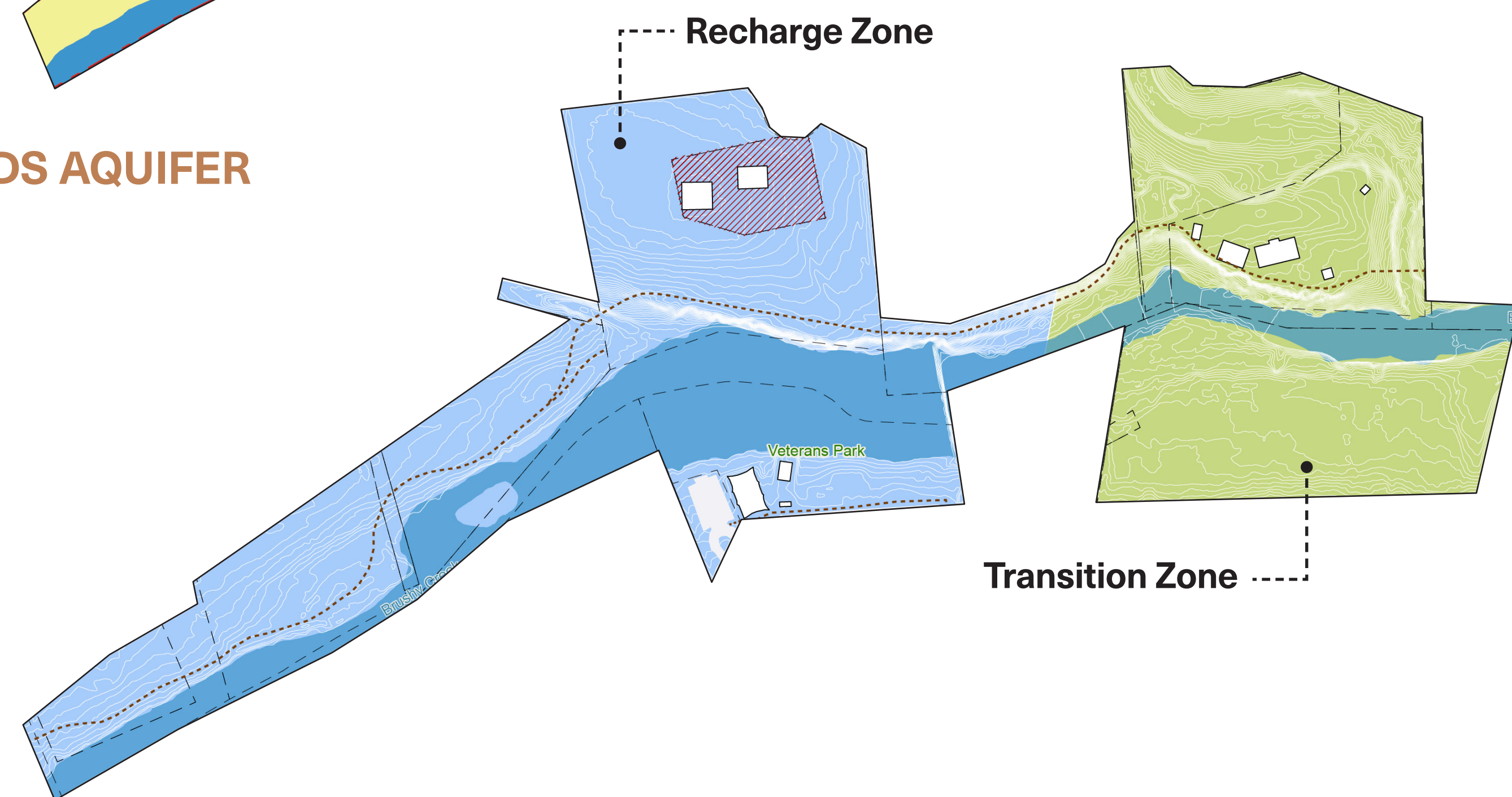
Based on invasive species, compacted soil, erosions, level of maintenance, and plant diversity.



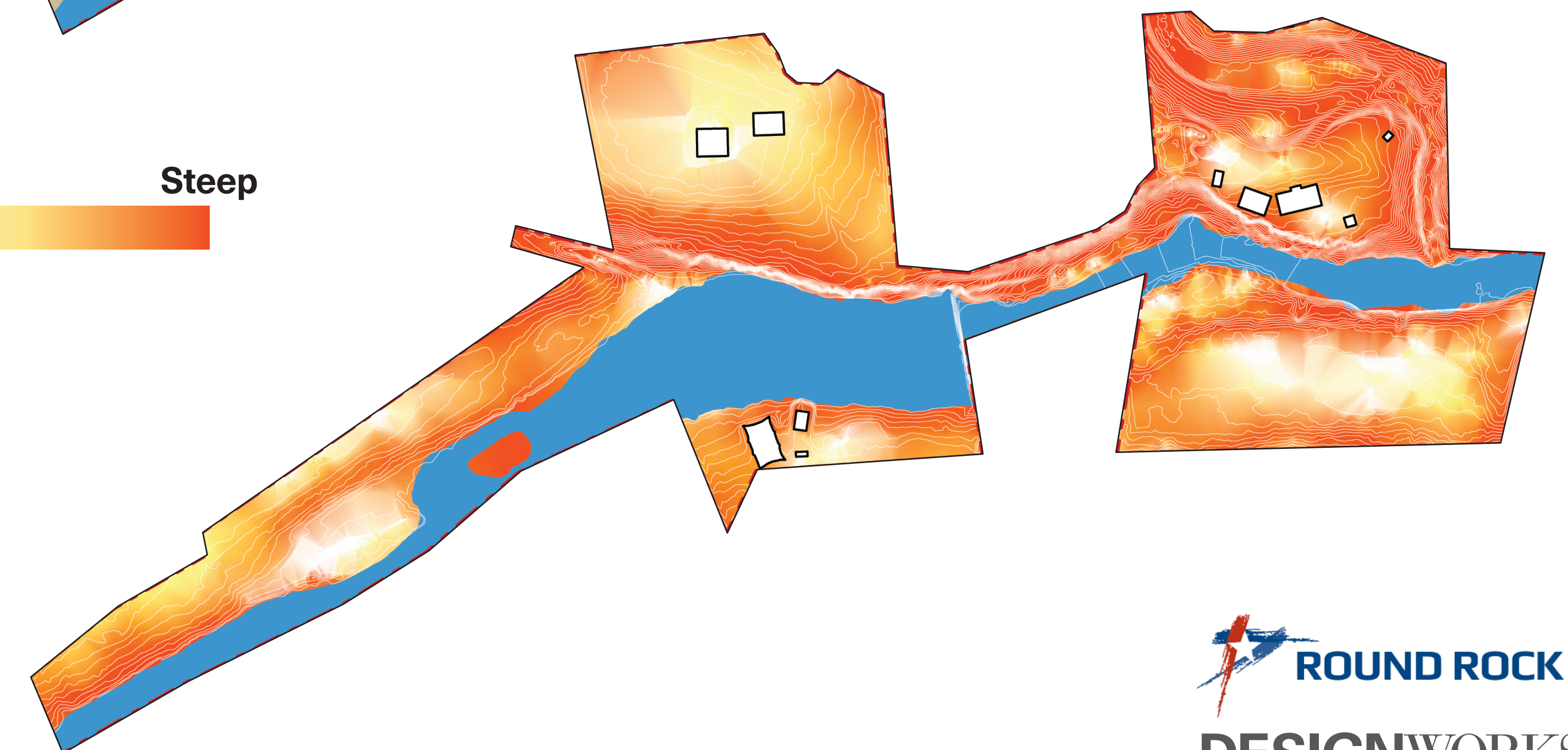
SOIL

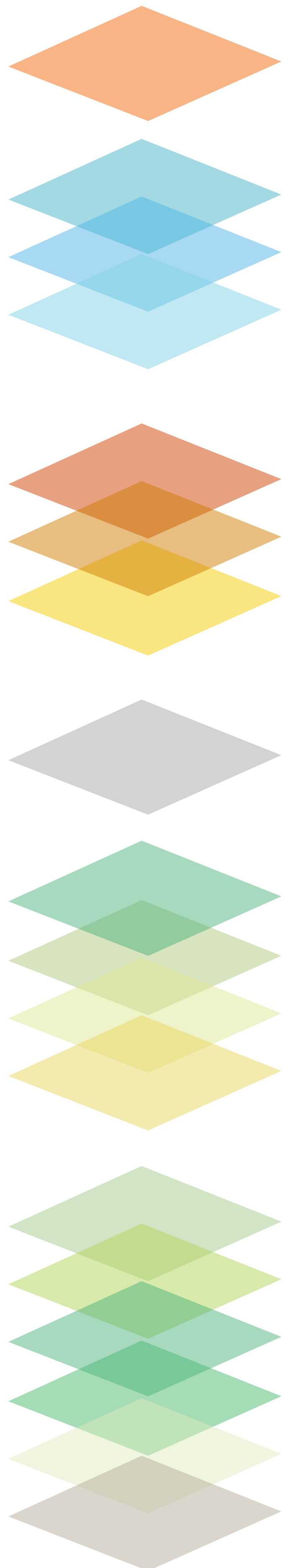


EDWARDS AQUIFER



SLOPE





- Outside of Historic Preservation Overlay 1 POINTS
- Floodplain**
- Regulatory 1 POINTS
- 100 Year Floodplain 2 POINTS
- 500 Year Floodplain 3 POINTS
- Slope**
- 3 - Steep 1 POINTS
- 2 2 POINTS
- 1 - Gradual 3 POINTS
- Current Condition**
- Impervious Cover 2 POINTS
- Ecological Sensitivity Level**
- 4 - High 1 POINTS
- 3 2 POINTS
- 2 3 POINTS
- 1 - Low 4 POINTS
- Plant Community**
- Floodplain Hardwood Forest 1 POINTS
- Oak - Hardwood Motte and Woodland 1 POINTS
- Oak - Hardwood Slope Forest 1 POINTS
- Converted Grassland 2 POINTS
- Urban Parkland 3 POINTS
- Urban Low Density 4 POINTS

