



ROUND ROCK DOWNTOWN PARK

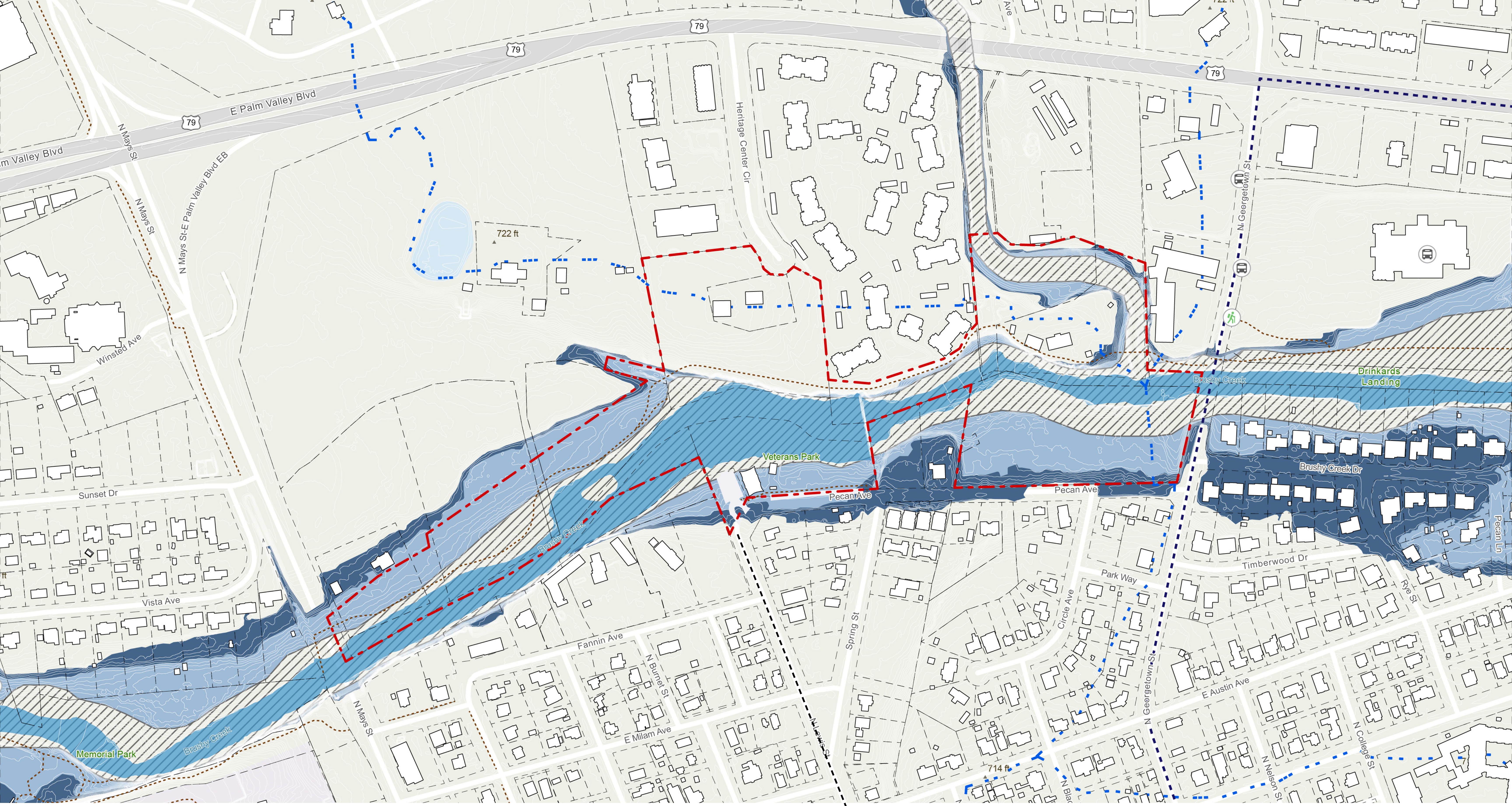
PROJECT SCHEDULE

	MAR	APR	MAY	JUN	JUL
Task 1: Project Start-Up					
Task 1.1 Project Management	█				
Task 1.2 Project SKO	○				
Task 1.3 Bi-Weekly Client Meeting	○	○	○	○	○
Task 1.4 Code/Entitlement Review	█				
Task 1.5 Architect/Engineer Coord Meeting		█			
Task 2: Site Analysis and Discovery					
Task 2.1 Site Visit	○				
Task 2.2 Data Collection		█	█		
Task 2.2 Data Analysis			○		
Task 3: Establishing Stakeholder Values					
Task 3.2 Focus Group Meeting			○		○
Task 3.3 Marketing Material		█	█	█	█
Task 4: Developing and Capturing the Vision					
Task 4.1 Public Open House			○		○
Task 4.2 Design Concept Alternatives		█	█	█	○
Task 4.3 Final Concept				○	
Task 4.4 Prelim Cost Estimate					█
Task 4.5 Prelim O&M Plan					█
Task 4.6 Concept Package					○

- Meetings
- Deliverable

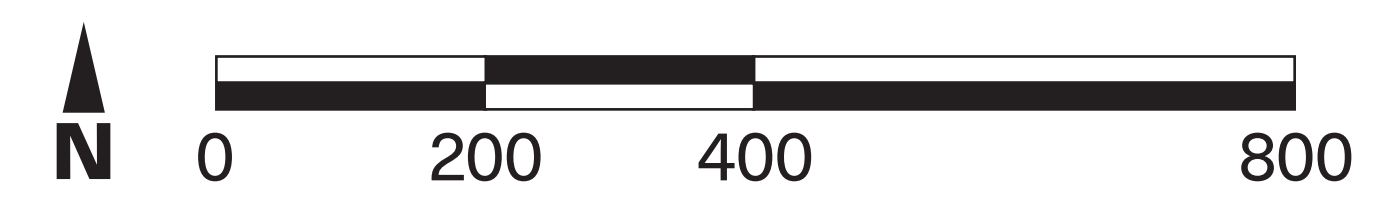
Take the survey and share your thoughts about the future of Round Rock Downtown Park!





Legends

- - - Site Boundary
- Buildings
- Roads
- Water
- Regulatory Floodplain
- 100yr Floodplain
- 500yr Floodplain
- Watershed Boundary
- Future Heritage Trail
- ⊕ Trailhead
- ⊕ Bus Route
- Bus Stops



Direct Connection to Downtown

Round Rock Downtown Park | PROJECT BOUNDARY

