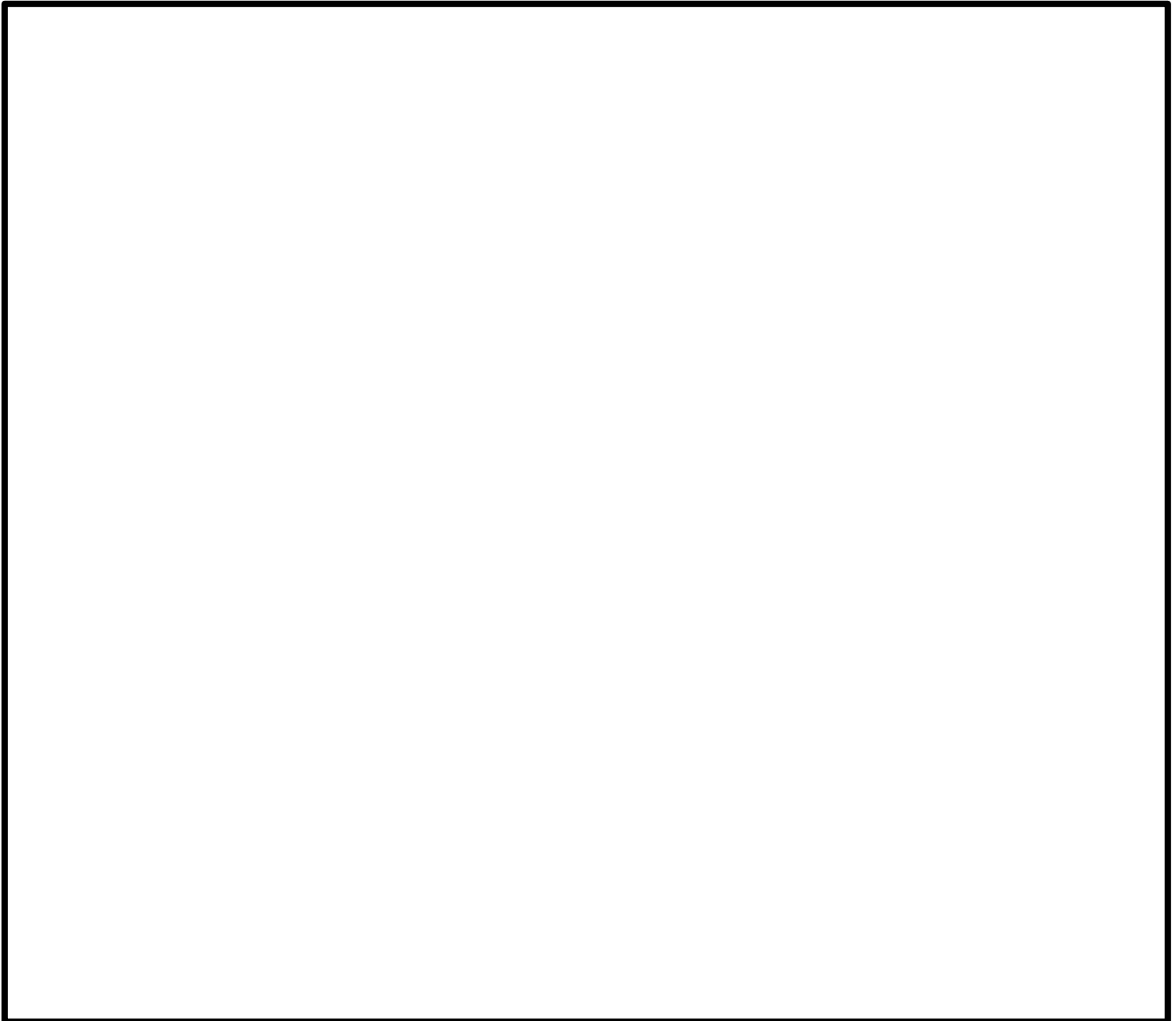


Required Information

- ❖ Show street name and house number
- ❖ Show distance from curb face to building
- ❖ Show distance from curb face to side edge of proposed sidewalk
- ❖ Show nearest Utility Pole and identify it by the affixed number
- ❖ Show any curb inlets/drainage structures/fire hydrants/sewer cleanouts or water meter boxes
- ❖ Draw a sketch of the proposed location and indicate sidewalk and driveway width and location where applicable

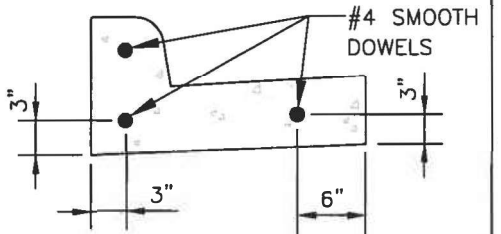
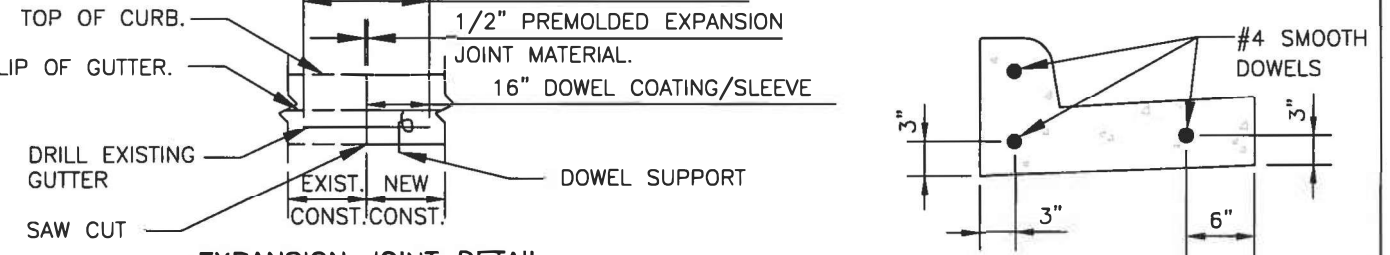
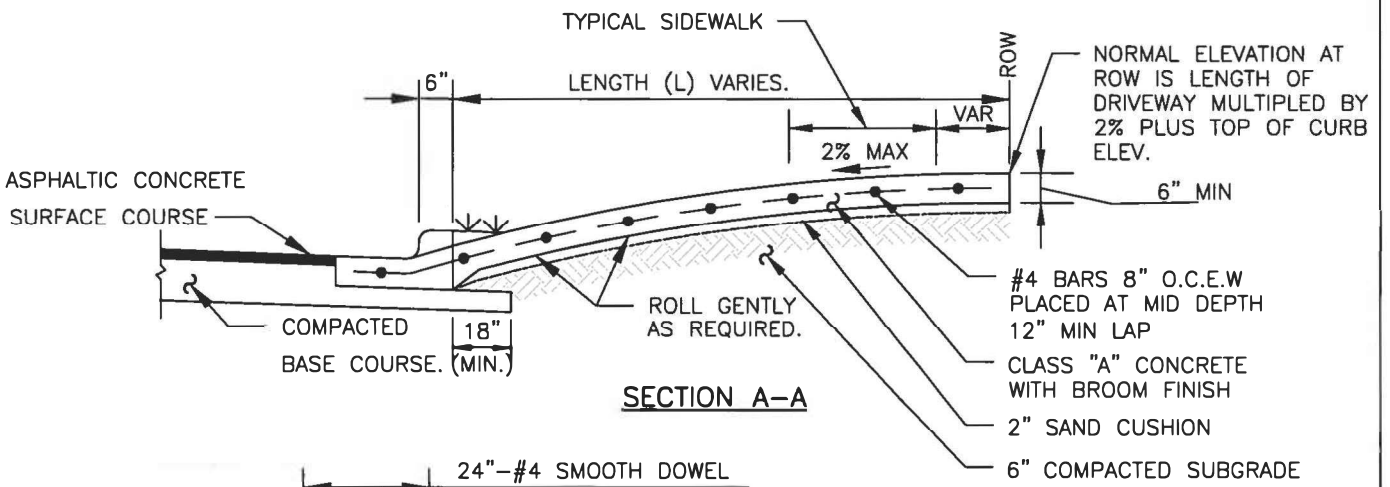
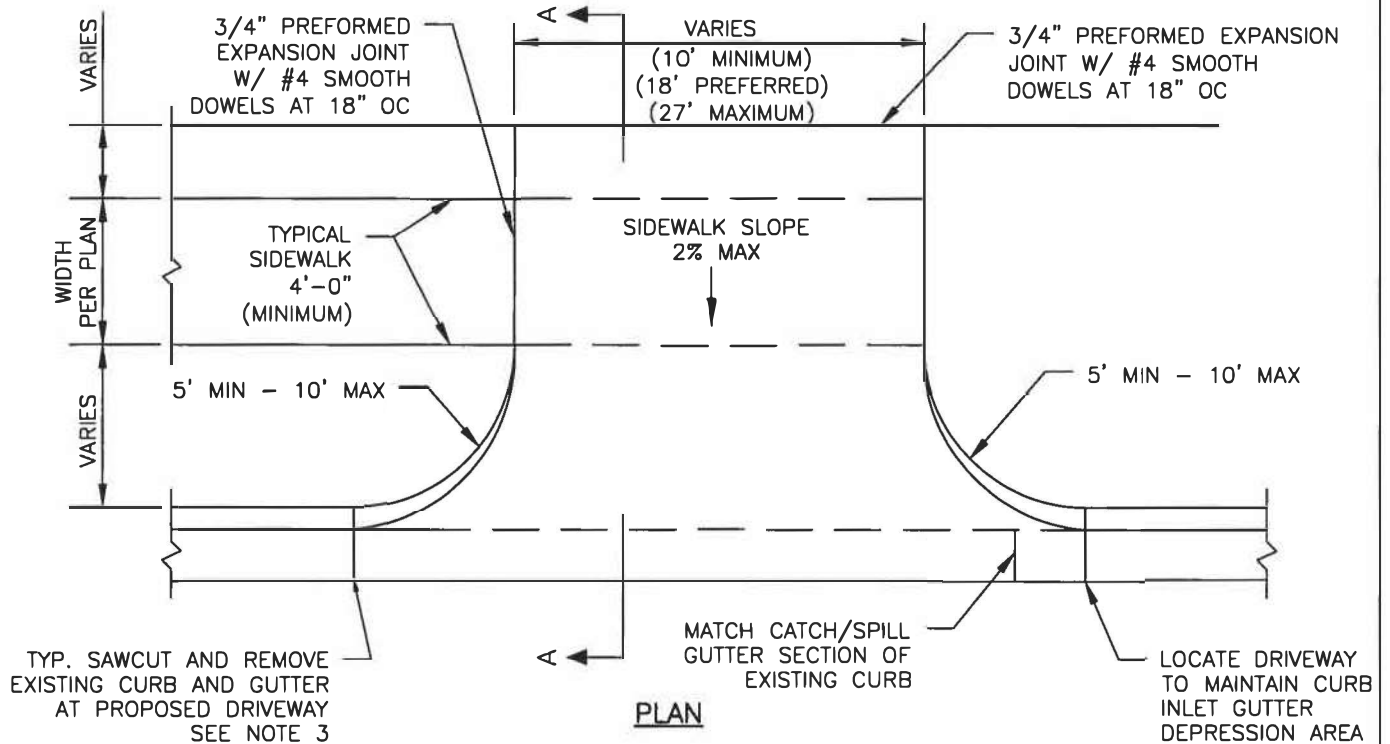
LOCATION SKETCH OF WORK



How many parking spaces are affected? _____ N/A

Is there alternate side parking on street? Yes No N/A

Notes/Comments: _____



- NOTES:**
1. PLACE 3/4 INCH EXPANSION JOINTS AT LOCATIONS SHOWN OR AS DIRECTED BY THE ENGINEER.
 2. FORM CONTROL JOINTS 1/4 INCH WIDE AND 3/4 INCH DEEP AT A MAXIMUM SPACING OF 10'. ROUND JOINT EDGES TO A MINIMUM 1/4" RADIUS.
 3. IF THE NEAREST EXISTING EXPANSION JOINT IS 5 FEET OR LESS FROM THE DRIVEWAY RADIUS, THEN REMOVE AND REPLACE CURB AND GUTTER TO THE NEAREST EXPANSION JOINT.

SCALE: NTS

DRAWING NO:
ST-02
SHEET 1 of 1

RECORD SIGNED COPY ON FILE

APPROVED

01-28-21

DATE

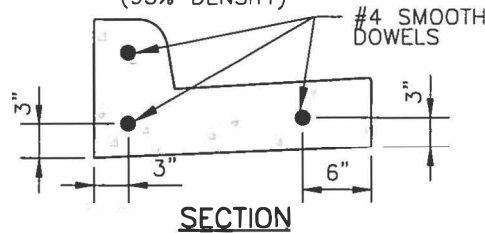
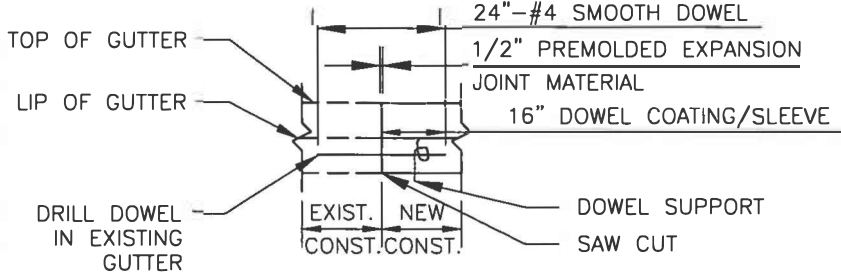
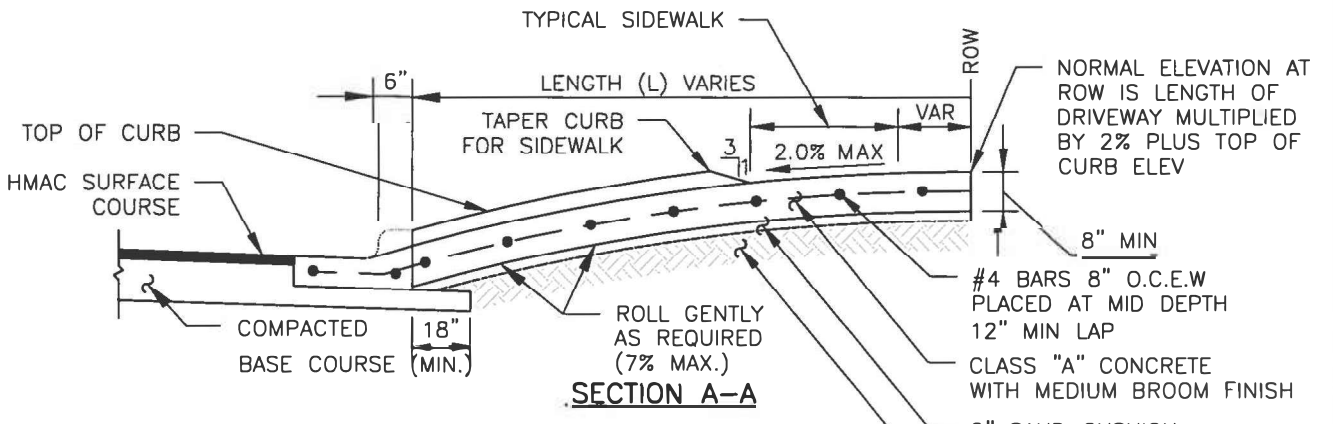
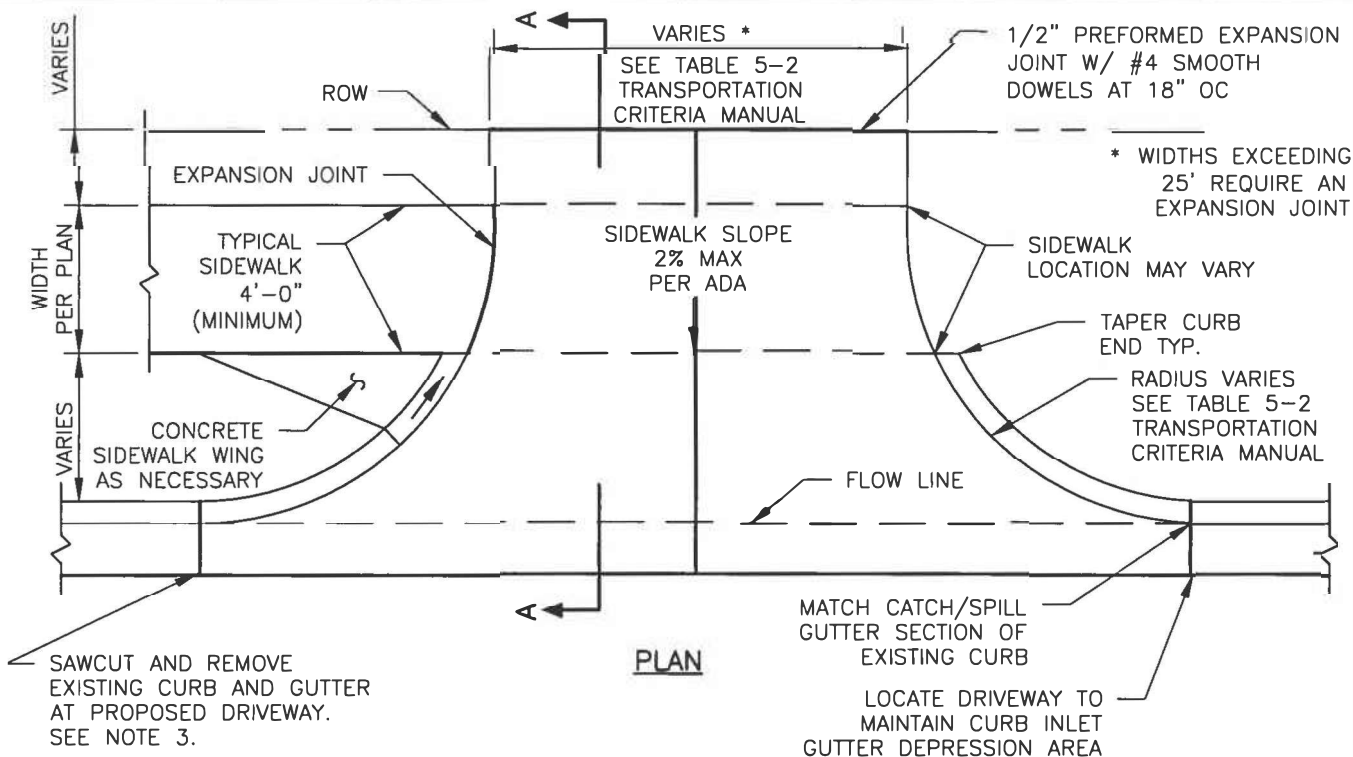
THE ARCHITECT/ENGINEER ASSUMES RESPONSIBILITY FOR THE APPROPRIATE USE OF THIS DETAIL.

CITY OF ROUND ROCK

CONCRETE DRIVEWAY DETAIL

TYPE I RESIDENTIAL





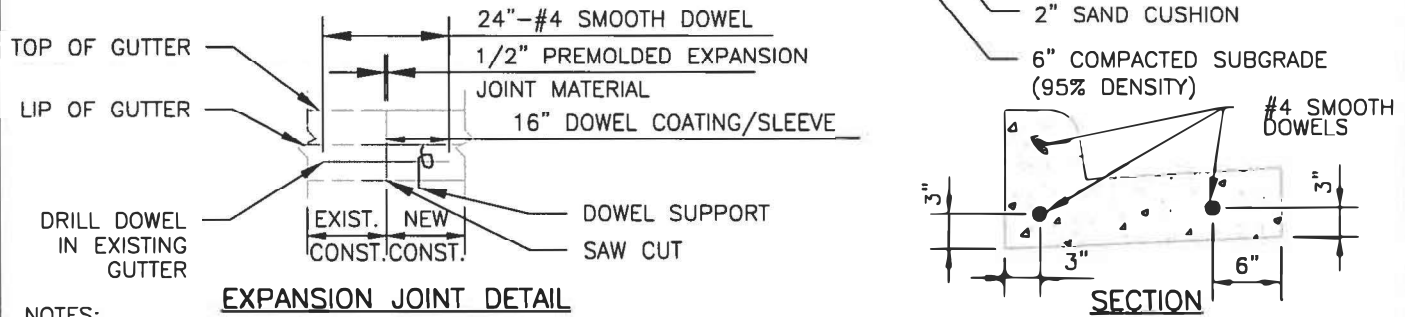
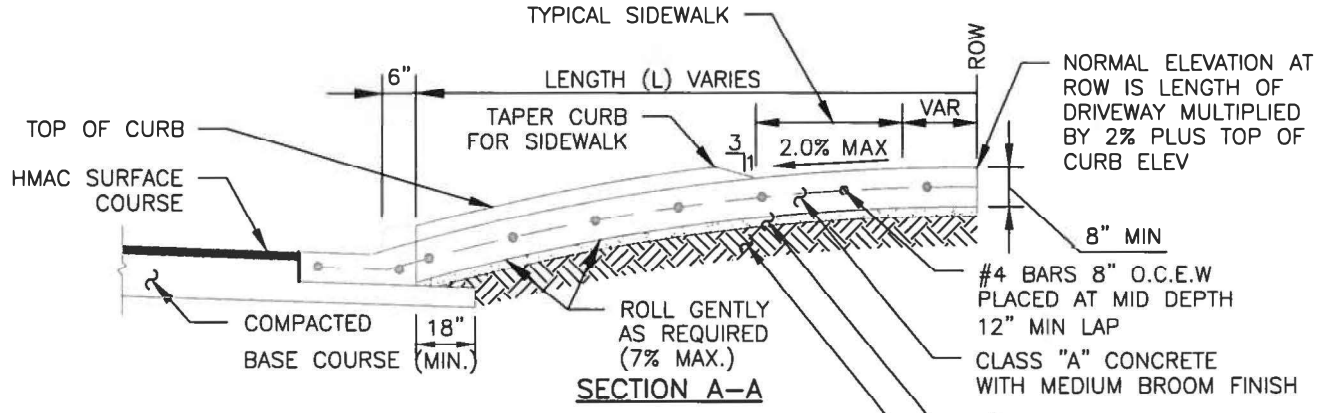
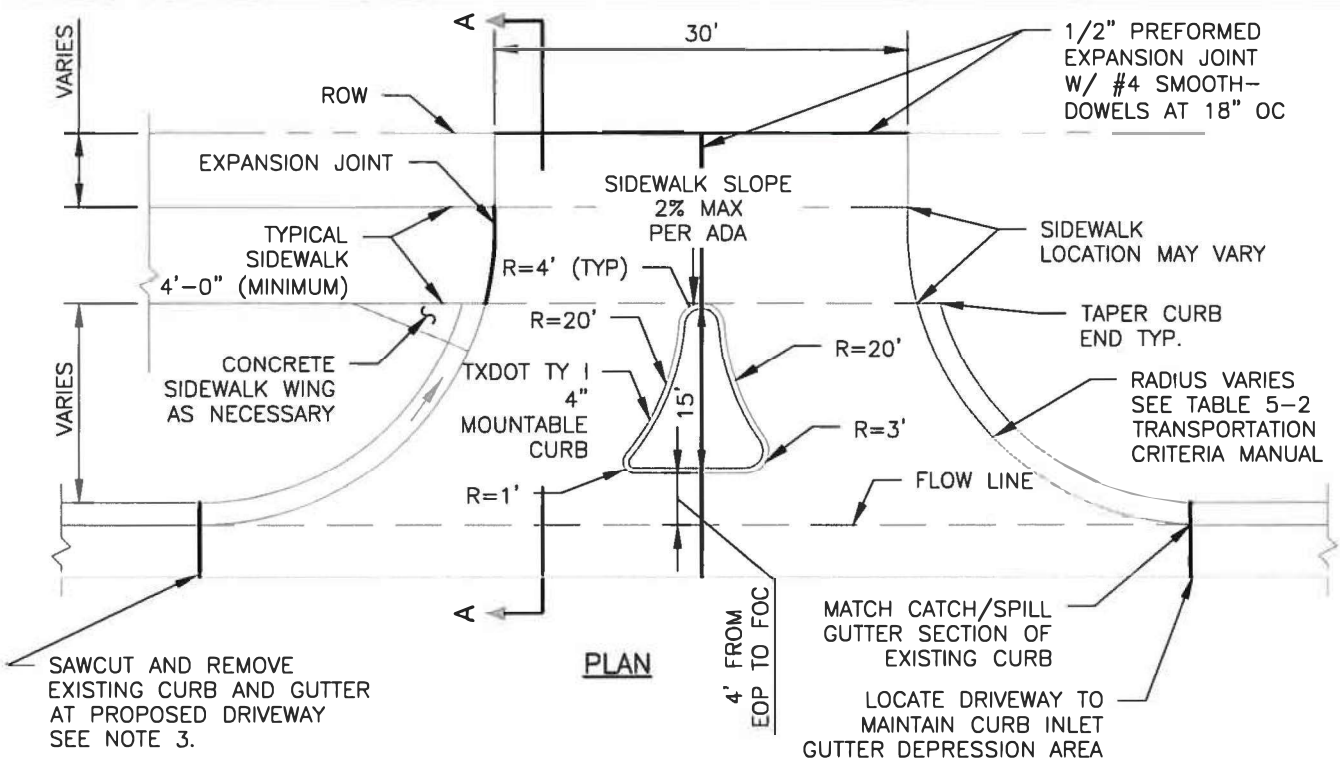
- NOTES:**
1. PLACE 1/2 INCH EXPANSION JOINTS AT LOCATIONS SHOWN OR AS DIRECTED BY THE ENGINEER.
 2. FORM CONTROL JOINTS 1/4 INCH WIDE AND 3/4 INCH DEEP AT A MAXIMUM SPACING OF 10'. ROUND JOINT EDGES TO A MINIMUM 1/4" RADIUS.
 3. IF THE NEAREST EXISTING EXPANSION JOINT IS 5 FEET OR LESS FROM THE DRIVEWAY RADIUS, THEN REMOVE AND REPLACE CURB AND GUTTER TO THE NEAREST EXPANSION JOINT. SAWCUT BETWEEN EXISTING CURB/ASPHALT SO THAT NO DAMAGE OCCURS TO EXISTING ROADWAY.
 4. PROPER CHAIRS SHALL BE USED TO SUPPORT STEEL REINFORCEMENT.

SCALE: NTS

RECORD SIGNED COPY ON FILE
 APPROVED
 01-28-21
 DATE
 THE ARCHITECT/ENGINEER ASSUMES RESPONSIBILITY FOR THE APPROPRIATE USE OF THIS DETAIL.

CITY OF ROUND ROCK
CONCRETE DRIVEWAY DETAIL TYPE II
COMMERCIAL OR MULTIFAMILY

DRAWING NO: ST-03.1
 SHEET 1 of 2



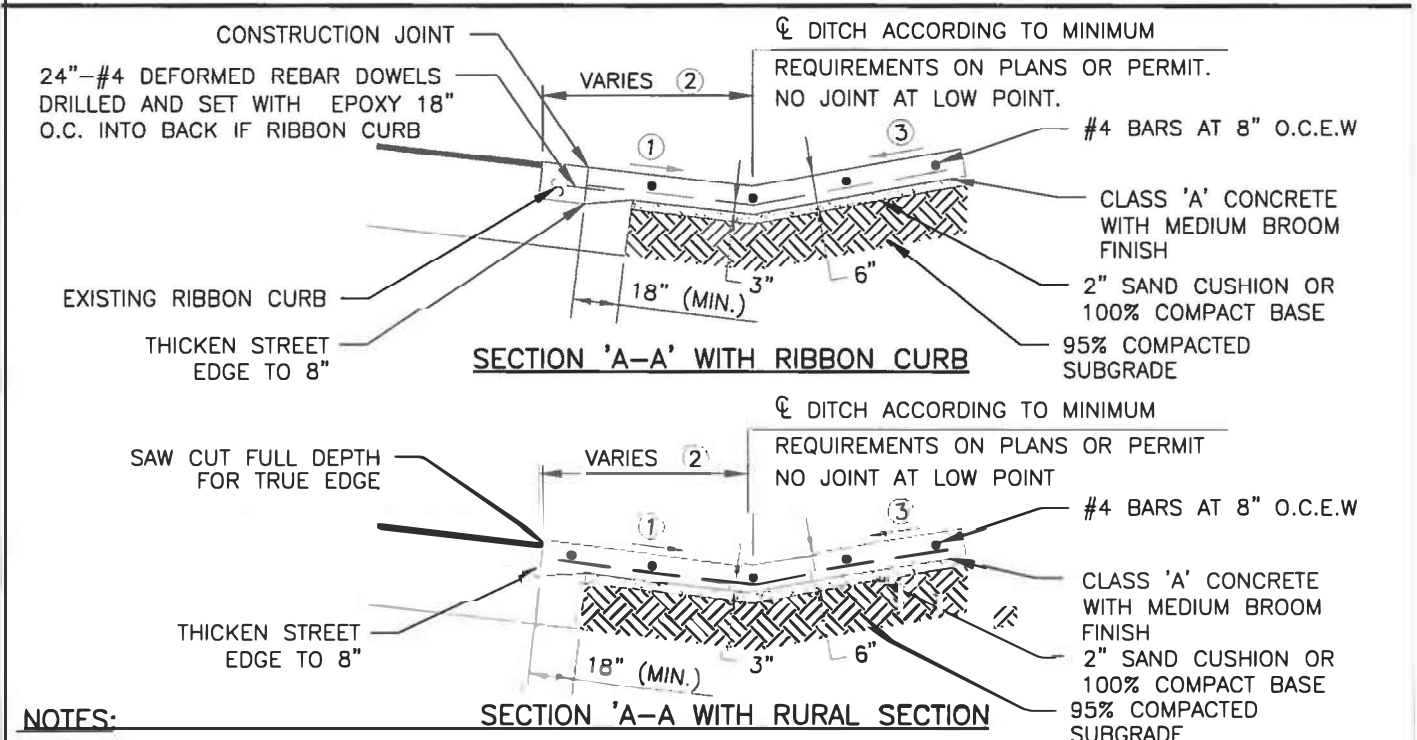
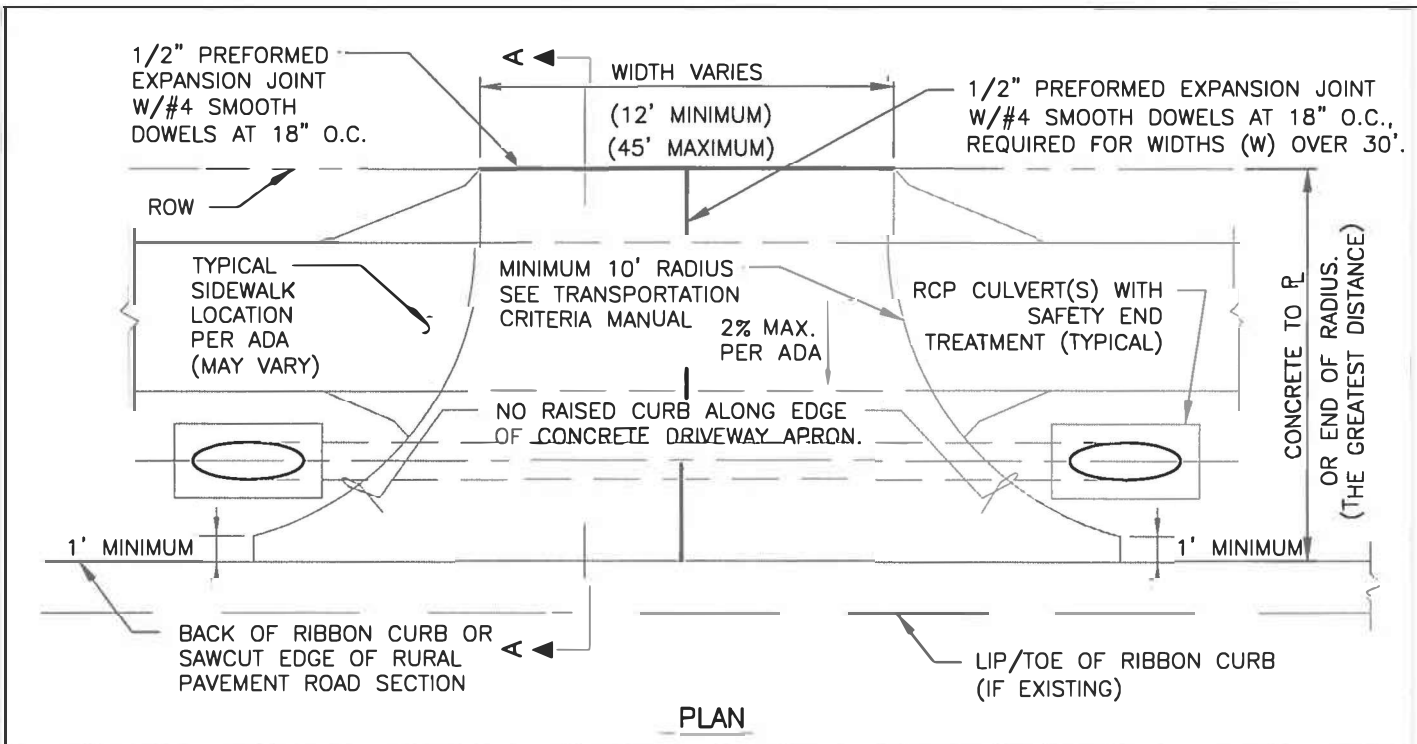
- NOTES:**
1. PLACE 1/2 INCH EXPANSION JOINTS AT LOCATIONS SHOWN OR AS DIRECTED BY THE ENGINEER.
 2. FORM CONTROL JOINTS 1/4 INCH WIDE AND 3/4 INCH DEEP AT A MAXIMUM SPACING OF 10'. ROUND JOINT EDGES TO A MINIMUM 1/4" RADIUS.
 3. IF THE NEAREST EXISTING EXPANSION JOINT IS 5 FEET OR LESS FROM THE DRIVEWAY RADIUS, THEN REMOVE AND REPLACE CURB AND GUTTER TO THE NEAREST EXPANSION JOINT. SAWCUT BETWEEN EXISTING CURB/ASPHALT SO THAT NO DAMAGE OCCURS TO EXISTING ROADWAY.
 4. PROPER CHAIRS SHALL BE USED TO SUPPORT STEEL REINFORCEMENT.

SCALE: NTS

RECORD SIGNED COPY ON FILE
 APPROVED
 01-28-21
 DATE
 THE ARCHITECT/ENGINEER ASSUMES RESPONSIBILITY FOR THE APPROPRIATE USE OF THIS DETAIL.

CITY OF ROUND ROCK
 CONCRETE DRIVEWAY DETAIL
 TYPE II COMMERCIAL WITH ISLAND

DRAWING NO:
 ST-03.2
 SHEET 2 of 2



NOTES:

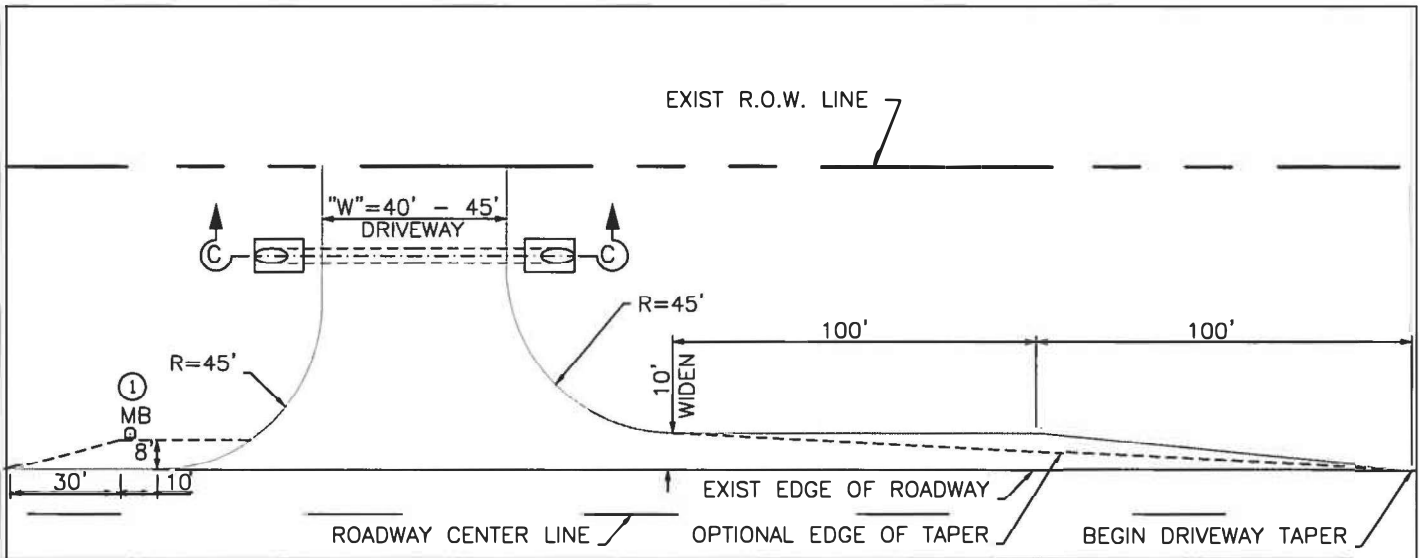
- ① NEW DRIVEWAY MUST ACCEPT STORM WATER RUNOFF FROM ROADWAY PAVEMENT, GRADING AWAY FROM PAVEMENT, AT A MINIMUM -2%, MAXIMUM -12%.
- ② GRADE BACK DISTANCES MUST BE AT A MINIMUM OF 12' OR Ø OF BAR DITCH IF GREATER THAN 12' OR TO THE DISTANCE REQUIRED IN THE PERMIT. (SHORTER OR LONGER)
- ③ GRADE OF DRIVEWAY PAST THE 12' POINT MAY CHANGE MULTIPLE TIMES AND BE POSITIVE OR NEGATIVE TO THE BACK SIDE OF THE APRON, BUT CAN BE NO GREATER THAN 2% IN THE AREA WHERE THE SIDEWALK IS TO CROSS.
- ④ PROPER CHAIRS SHALL BE USED TO SUPPORT THE STEEL REINFORCEMENT.

SCALE: NTS
DRAWING NO:
 ST-04.1
SHEET 1 of 1

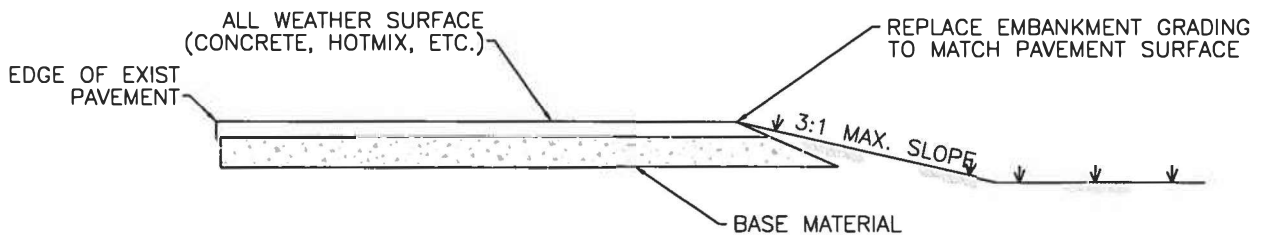
RECORD SIGNED COPY
 ON FILE
APPROVED
 01-28-21
 DATE
 THE ARCHITECT/ENGINEER ASSUMES RESPONSIBILITY FOR THE APPROPRIATE USE OF THIS DETAIL.

CITY OF ROUND ROCK
CONCRETE DRIVEWAY DETAIL
(RIBBON CURB OR RURAL SECTION)

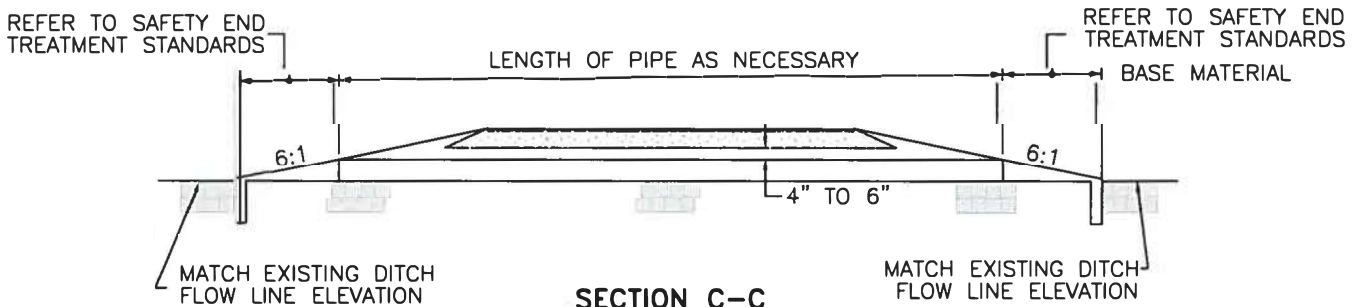




① MAILBOX PAD IS ONLY REQUIRED IF MAIL IS TO BE DELIVERED AT THIS LOCATION.



TYPICAL URBAN DRIVEWAY SECTION



SECTION C-C

* TO BE UTILIZED AS DETERMINED BY TRANSPORTATION DEPARTMENT

SCALE: NTS

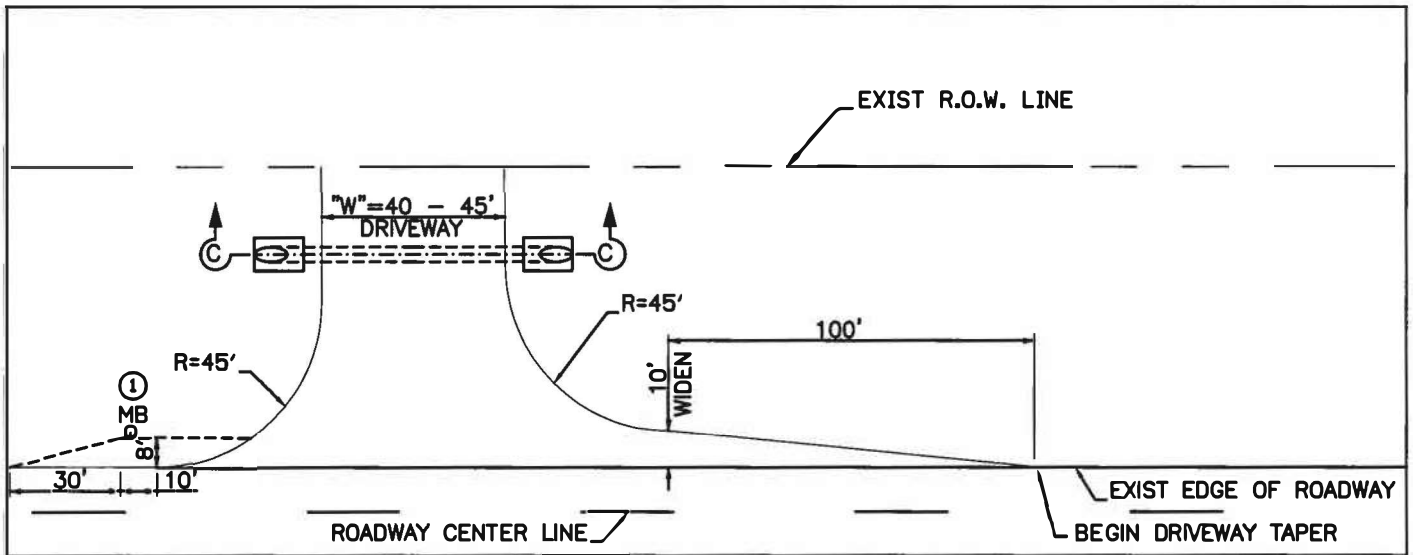
RECORD SIGNED COPY
ON FILE
APPROVED
01-28-21
DATE
THE ARCHITECT/ENGINEER ASSUMES
RESPONSIBILITY FOR THE APPROPRIATE
USE OF THIS DETAIL.

CITY OF ROUND ROCK

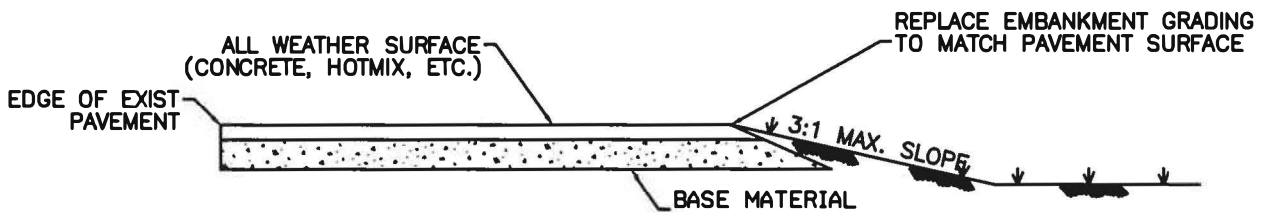
DRAWING NO:
ST-04.2
SHEET 1 of 2

**NON RESIDENTIAL DRIVEWAY
DESIGN SPEED GREATER THAN
45 MPH**

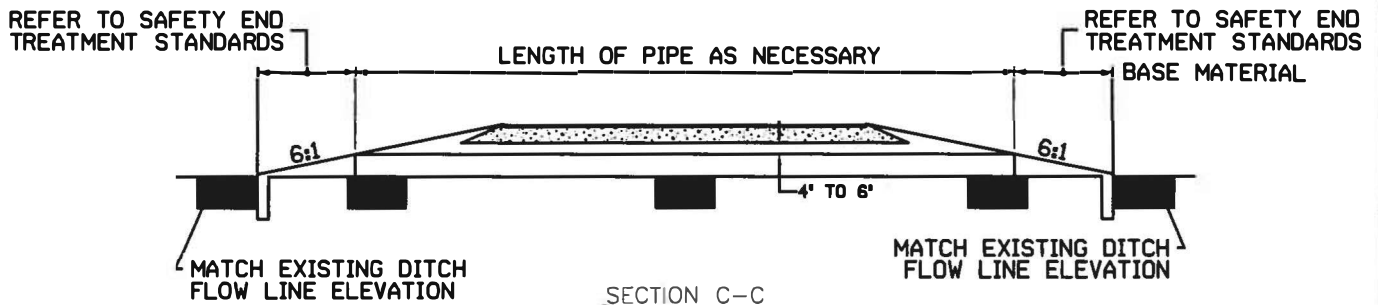




① MAILBOX PAD IS ONLY REQUIRED IF MAIL IS TO BE DELIVERED AT THIS LOCATION.



TYPICAL URBAN DRIVEWAY SECTION



• TO BE UTILIZED AS DETERMINED BY TRANSPORTATION DEPARTMENT

SCALE: NTS

RECORD SIGNED COPY
ON FILE
APPROVED

CITY OF ROUND ROCK

DRAWING NO:
ST-04.2
SHEET 1 of 2

01-28-21
DATE

NON RESIDENTIAL DRIVEWAY
DESIGN SPEED LESS THAN 45 MPH



THE ARCHITECT/ENGINEER ASSUMES
RESPONSIBILITY FOR THE APPROPRIATE
USE OF THIS DETAIL.