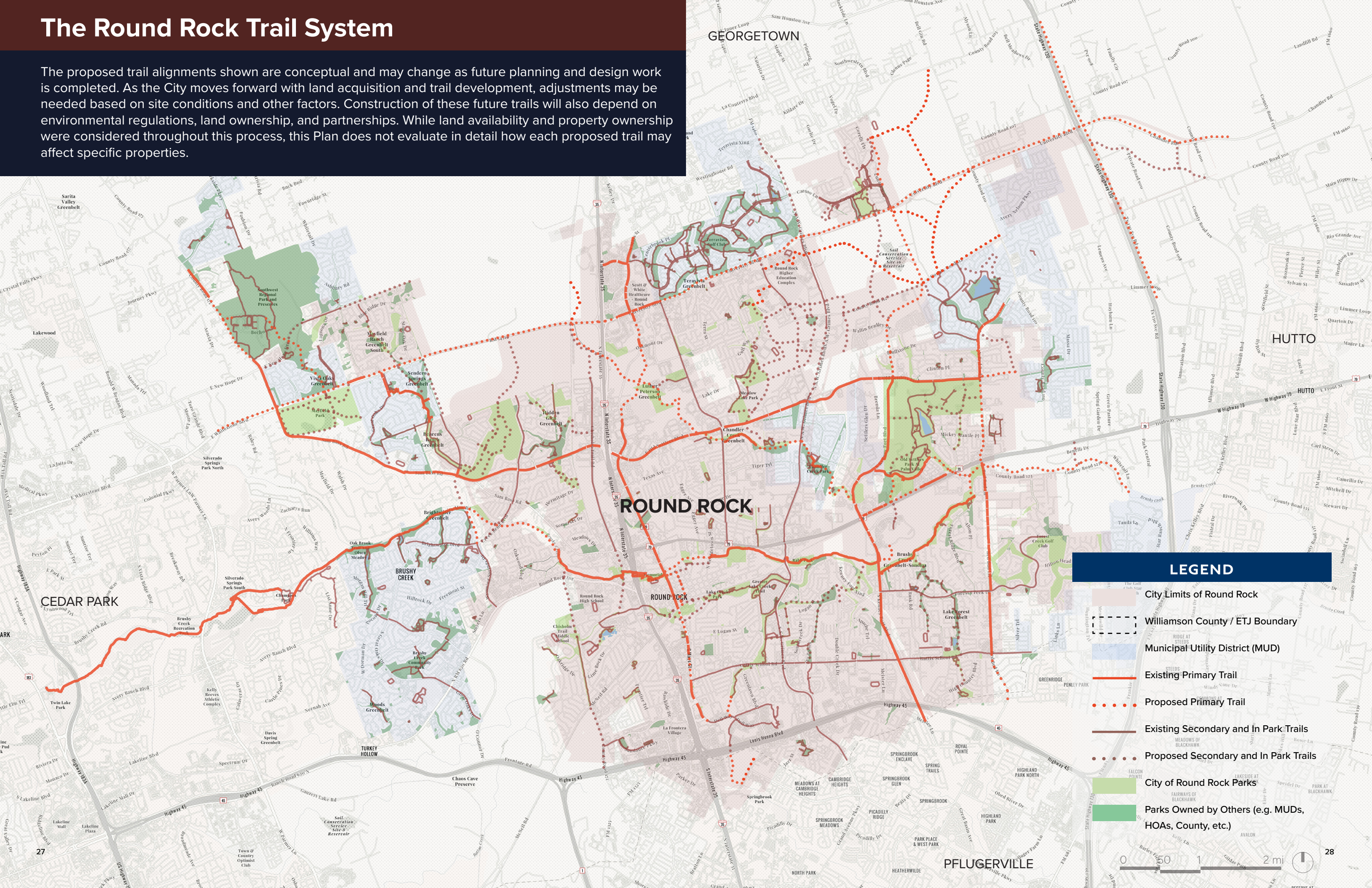


# The Round Rock Trail System

The proposed trail alignments shown are conceptual and may change as future planning and design work is completed. As the City moves forward with land acquisition and trail development, adjustments may be needed based on site conditions and other factors. Construction of these future trails will also depend on environmental regulations, land ownership, and partnerships. While land availability and property ownership were considered throughout this process, this Plan does not evaluate in detail how each proposed trail may affect specific properties.



## LEGEND

- City Limits of Round Rock
- Williamson County / ETJ Boundary
- Municipal Utility District (MUD)
- Existing Primary Trail
- Proposed Primary Trail
- Existing Secondary and In Park Trails
- Proposed Secondary and In Park Trails
- City of Round Rock Parks
- Parks Owned by Others (e.g. MUDs, HOAs, County, etc.)

