

CITY OF ROUND ROCK
 CONCEPTUAL DESIGN SCHEMATIC
 SAM BASS & HAIRY MAN
 ALTERNATE 2

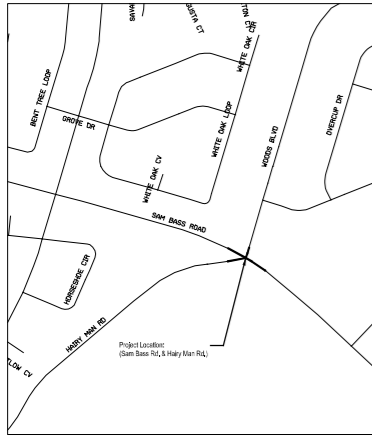
SAM BASS & HAIRY MAN
 CITY OF ROUND ROCK

NET LENGTH OF ROADWAY = 1,600 FT. = 0.303 MI.
 NET LENGTH OF BRIDGE = 0 FT. = 0 MI.
 NET LENGTH OF PROJECT = 1,600 FT. = 0.303 MI.

A.D.T. (2020) = 6,649 vpd
 A.D.T. (2028) = N/A vpd
 A.D.T. (2043) = N/A vpd
 LIMITS: FROM FM 2770 TO FM 1626

ROADWAY	FUNCTIONAL CLASS	DESIGN SPEED
SAM BASS ROAD	URBAN COLLECTOR (3-LANE)	35 MPH
HAIRY MAN ROAD	COLLECTOR	30 MPH
WOODS BOULEVARD	URBAN LOCAL	30 MPH

DESIGN VEHICLE MAJOR STREET - WB-47
 DESIGN VEHICLE MINOR STREET - BL-40



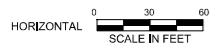
EXCEPTIONS: NONE
 EQUATIONS: NONE
 HARDWARE CHOICES: NONE

- NOTES:
1. ALL PROJECT COORDINATES ARE SURFACE VALUES BASED ON THE TEXAS STATE PLANE COORDINATE SYSTEM (NAD 83, CENTRAL ZONE 4203). TO CONVERT COORDINATES AND DISTANCES TO GRID VALUES MULTIPLY BY A COMBINED SURFACE ADJUSTMENT FACTOR OF 0.9999949. ELEVATIONS REPORTED ARE NAVD83 ORTHOMETRIC GPS HEIGHTS.
 2. HORIZONTAL AND VERTICAL VALUES SHOWN HEREIN WERE ESTABLISHED USING A SERIES OF REPETITIVE VRS OBSERVATIONS. NO DETAIL LEVELS WERE RUN FOR THIS PROJECT.
 3. A SITE CALIBRATION SHOULD BE PERFORMED WHEN UTILIZING THE CONTROL SHOWN HEREIN.
 4. AERIAL IMAGE SHOWN IS FROM TNRS BASEMAP DATA DOWNLOAD.
 5. ROW MAPPING AND EASEMENT INFORMATION IS TO BE DETERMINED IN LATER PHASE. PROPOSED ROW SHOWN IS AN ESTIMATE AND FOR INFORMATION ONLY.

PRELIMINARY-FOR INFORMATION ONLY

THIS DOCUMENT IS RELEASED FOR THE PURPOSE OF INTERIM REVIEW AND IS NOT TO BE USED FOR CONSTRUCTION, BIDDING, OR PERMITTING PURPOSES.

Supervised By: STEVEN D WIDACKI
 P.E. Serial No. 66138
 Date: 09/23/2024



AMERICAN STRUCTUREPOINT INC.
 TBPELS FIRM NO. F-10069
 2600 VIA FORTUNA,
 BUILDING ONE, SUITE 300
 AUSTIN, TX 78746
 TEL 512.494.6037 FAX 317.543.0270
 www.ustrucurepoint.com

CITY OF ROUND ROCK
 CONCEPTUAL DESIGN SCHEMATIC
 SAM BASS & HAIRY MAN
 ALTERNATE 2

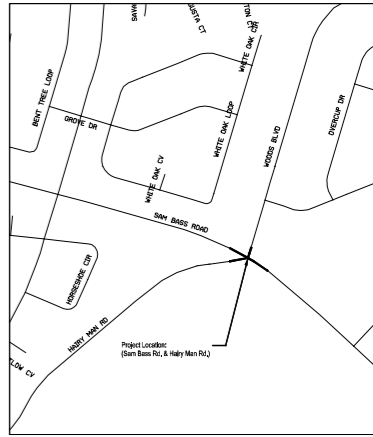
SAM BASS & HAIRY MAN
 CITY OF ROUND ROCK

NET LENGTH OF ROADWAY = 1,600 FT. = 0.303 MI.
 NET LENGTH OF BRIDGE = 0 FT. = 0 MI.
 NET LENGTH OF PROJECT = 1,600 FT. = 0.303 MI.

A.D.T. (2020) = 6,649 vpd
 A.D.T. (2028) = N/A vpd
 A.D.T. (2043) = N/A vpd
 LIMITS: FROM FM 2770 TO FM 1626

ROADWAY	FUNCTIONAL CLASS	DESIGN SPEED
SAM BASS ROAD	URBAN COLLECTOR (3-LANE)	35 MPH
HAIRY MAN ROAD	COLLECTOR	30 MPH
WOODS BOULEVARD	URBAN LOCAL	30 MPH

DESIGN VEHICLE MAJOR STREET - WB-47
 DESIGN VEHICLE MINOR STREET - BL-40



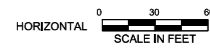
EXCEPTIONS: NONE
 EQUATIONS: NONE
 HARDWARE CHOICES: NONE

- NOTES:
1. ALL PROJECT COORDINATES ARE SURFACE VALUES BASED ON THE TEXAS STATE PLANE COORDINATE SYSTEM (NAD 83, CENTRAL ZONE 4203). TO CONVERT COORDINATES AND DISTANCES TO GRID VALUES MULTIPLY BY A COMBINED SURFACE ADJUSTMENT FACTOR OF 0.9999949. ELEVATIONS REPORTED ARE NAVD83 ORTHOMETRIC GPS HEIGHTS.
 2. HORIZONTAL AND VERTICAL VALUES SHOWN HEREIN WERE ESTABLISHED USING A SERIES OF REPETITIVE VRS OBSERVATIONS. NO DETAIL LEVELS WERE RUN FOR THIS PROJECT.
 3. A SITE CALIBRATION SHOULD BE PERFORMED WHEN UTILIZING THE CONTROL SHOWN HEREIN.
 4. AERIAL IMAGE SHOWN IS FROM TNRS BASEMAP DATA DOWNLOAD.
 5. ROW MAPPING AND EASEMENT INFORMATION IS TO BE DETERMINED IN LATER PHASE. PROPOSED ROW SHOWN IS AN ESTIMATE AND FOR INFORMATION ONLY.

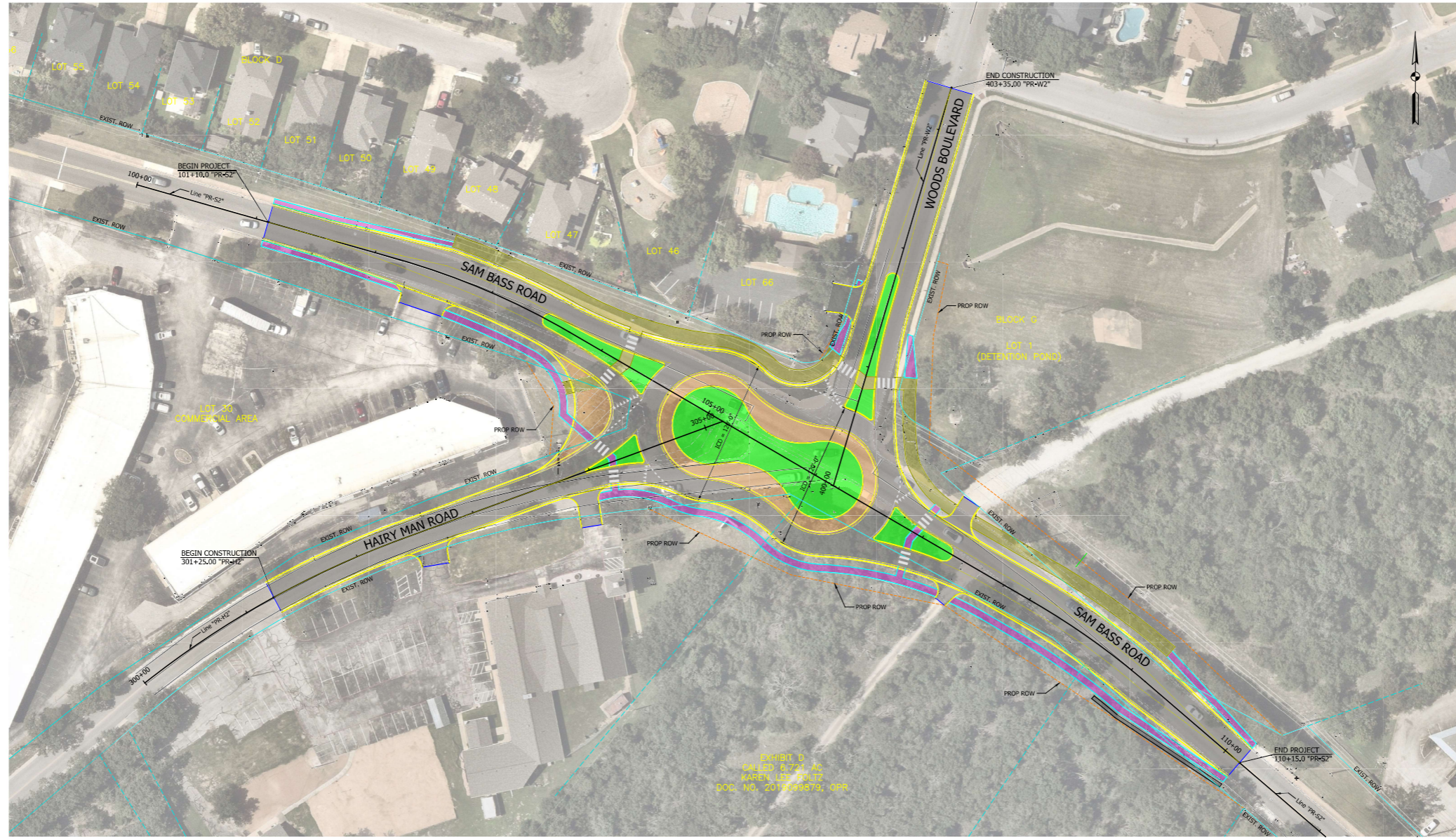
PRELIMINARY-FOR INFORMATION ONLY

THIS DOCUMENT IS RELEASED FOR THE PURPOSE OF INTERIM REVIEW AND IS NOT TO BE USED FOR CONSTRUCTION, BIDDING, OR PERMITTING PURPOSES.

Supervised By: STEVEN D WIDACKI
 P.E. Serial No. 66138
 Date: 09/23/2024



AMERICAN STRUCTUREPOINT INC.
 TBPELS FIRM NO. F-10069
 2600 VIA FORTUNA,
 BUILDING ONE, SUITE 300
 AUSTIN, TX 78746
 TEL 512.494.6037 FAX 317.543.0270
 www.ustrucurepoint.com



LEGEND:

- EXISTING PROPERTY LINES
- DIRECTION OF TRAVEL
- PROPOSED EDGE OF PAVEMENT
- PROPOSED CURB
- EXISTING ROW
- PROPOSED ROW
- PROPOSED SIDEWALK
- PROPOSED SHARED USE PATH
- PROPOSED ASPHALT PAVEMENT
- PROPOSED TRUCK APRON
- PROPOSED GRASS SODDING
- PROPOSED RETAINING WALL